

職員室

I GOT IT MIXED WITH MY GYM UNIFORM.

しやん.

WHY DID YOU WAIT TO TELL ME UNTIL NOW?

GEEZ,

YOU FORGOT YOUR THINGS FOR THE POOL?



ぽんぽん

YOUR SIZE?

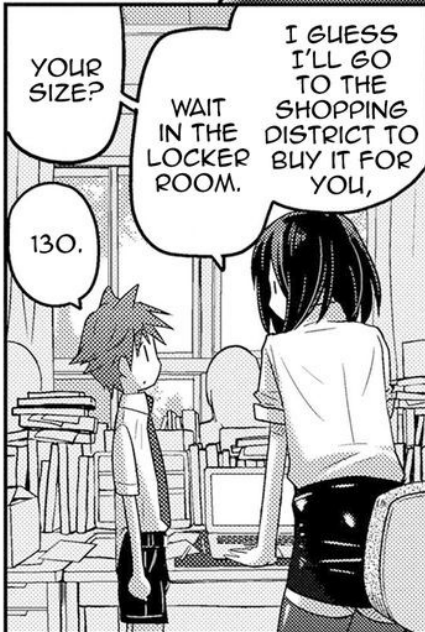
WAIT IN THE LOCKER ROOM.

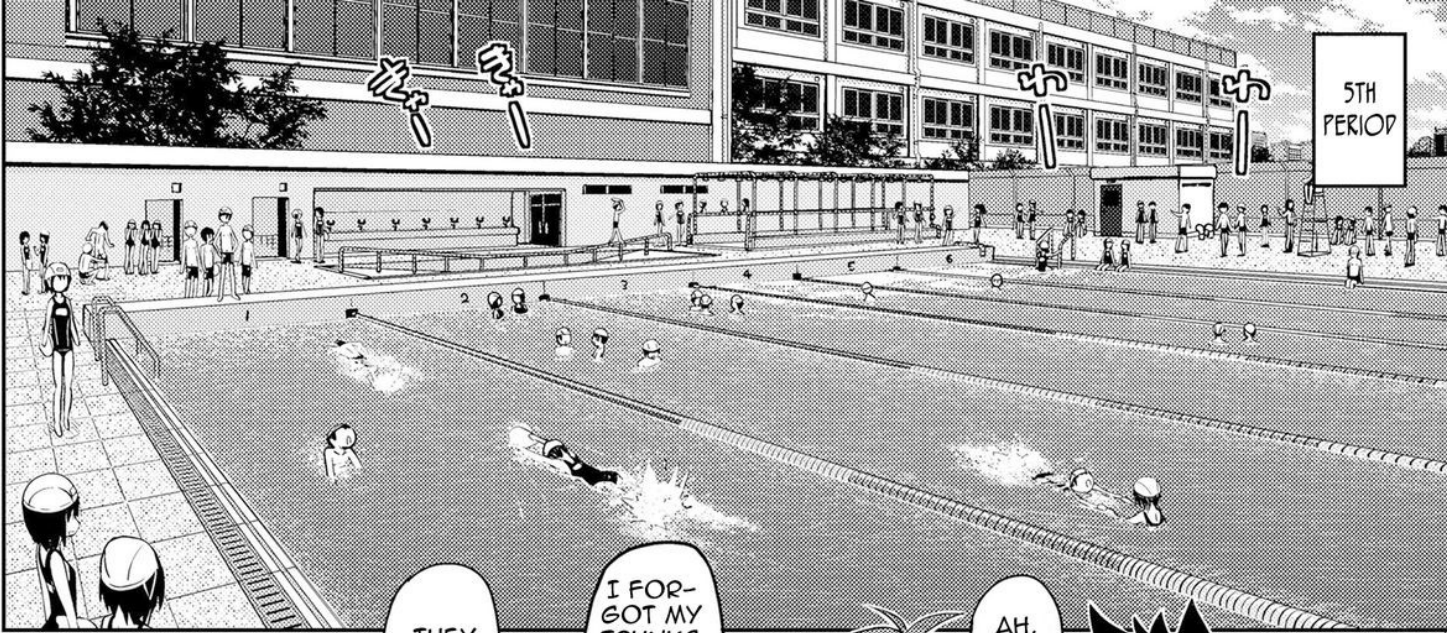
I GUESS I'LL GO TO THE SHOPPING DISTRICT TO BUY IT FOR YOU,

130.

MOM'S NOT HOME.

CAN YOU GO TO YOUR HOUSE TO RETRIEVE THEM?





AREN'T THEY SMALLER THAN REGULAR UNDERWEAR?

STILL, YOU CAN'T OFTEN WALK IN FRONT OF WOMEN IN BRIEFS LIKE THESE.

STICKS OUT LIKE A SORE THUMB.

THEY ONLY HAD THESE.

I FORGOT MY TRUNKS AND SENSEI WENT TO BUY THEM FOR ME BUT

AH, NO.

YO! NEGLI-SEMARU, WHY ARE YOU WEARING THESE MICRO RACING BRIEFS?

SPECIAL TRAINING?

IT HIGHLIGHTS YOUR COCK IN A DIRTY WAY.



?

OH YEAH, IF WE'RE TALKING ABOUT SMALL SWIMSUITS LOOK THERE.

IF WE PRESS HARD WILL YOU CUM?

DON'T PULL THEM UP.



AND LOOK, IN CONTRAST WITH THEM YOUR COCK IS HUGE.

ADULT-SIZED? I SEE YOU IN A DIFFERENT LIGHT.



YAMA-SHINA-SEN-SEI'S

YOU ONLY CAN SEE A BIT OF HER SWIMSUIT BUT ISN'T THE CROTCH AREA EROTIC?

IT LOOKS AS IF SHE FORGOT TO PUT ON HER SKIRT.

IT'S JUST A SWIMSUIT SO IT LOOKS THE SAME AS PANTIES.

THOSE ARE NOT PANTIES, IT GOES HIGHER.

EXPOSING HER PANTIES IN FRONT OF HER STUDENTS !?

I WONDER IF IT DOESN'T HURT THE WAY IT'S SQUEEZING HER CROTCH?

MAYBE IT DOESN'T HURT BECAUSE SHE DOESN'T HAVE A COCK?

ALSO HER BOOBS ARE MUCH BIGGER THAN THE GIRLS'.

I WANT TO TAKE OFF THAT JERSEY.

YOU'LL GET HIT.

たっ
たっ
たっ

たっ
たっ
たっ

たっ
たっ
たっ



ME TOO, LOL.

SHIT, I GOT A HARD ON.

Ah, the boys are playing hooky
Let's tell sensei!



.....

.....

.....

たっ

たっ

たっ

たっ

たっ



NEGLI-SEMARU, YOU ARE SUPER LECHEROUS.

I'D TOUCH THE AREA OF HER PANTIES.

I'D RUB HER BOOBS UNTIL I CAME.

I'D TOUCH HER BODY UNTIL I CAME.

IF I COULD STOP TIME I WOULD TAKE OFF SENSEI'S JERSEY AND SEE EVERYTHING.

Wa ha ha ha



I CAN IMAGINE MY DICK GETTING HARD.

HE GOES TO THE TOILET FIRST TO LET OUT HIS SEMEN.

WON'T HIS SEMEN COME OUT BETWEEN THEM?

THAT'S WHEN A MAN AND A WOMAN EMBRACE NAKED

BY THE WAY, DO YOU KNOW WHAT "SEX" IS?

THAT'S RIGHT, IF YOUR DICK GETS HARD WHEN YOU ARE EMBRACING WON'T IT GET IN THE WAY?

AND THEY MAKE OUT WITH EACH OTHER?

いちっ

いちっ

あははは

あははは



NO WAY! IS THAT WHY THEY HAVE A SLIT?

Mental image

YOU'RE WRONG, SEX IS WHEN YOU INSERT YOUR ERECT COCK INSIDE THE SLIT THAT WOMAN HAVE IN THEIR CROTCH WHILE MAKING OUT.



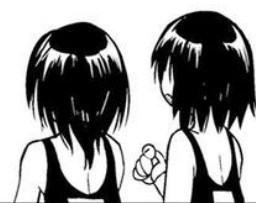
THEY PUT A DICK INSIDE THEIR MOUTHS!?

HUH!?

I HEARD THAT WHEN WOMEN GET EXCITED THEY EVEN LICK A MAN'S HARD COCK ALL OVER.

MAYBE SHE GETS ALL LOVEY-DOVEY WITH HER PARTNER.

SHE ALWAYS SEEMS TO BE ANGRY.



SHE SHOULD KNOW.

I WONDER IF SENSEI ALSO KNOWS HOW TO HAVE SEX?



SHE SAID THAT SHE DIDN'T HAVE A BOY-FRIEND.

DOES SHE ALSO DO THINGS LIKE LICKING A COCK?

PUTTING YOUR PEELED OFF COCK INSIDE HER SLIT WHILE KISSING AND EMBRACING.

WELL, AT ANY RATE, SOMEDAY A MAN WILL THRUST HIS COCK TO THE BASE INSIDE THAT CROTCH,

DON'T SAY IT SO LOUDLY.

TO THE BASE!?

IN THE SLIT BETWEEN THE LEGS OF YAMASHINA IROHA.

LET'S SAY THAT AGAIN.

Mental Image

DEEP!

THAT'S ALREADY INSIDE HER BODY.



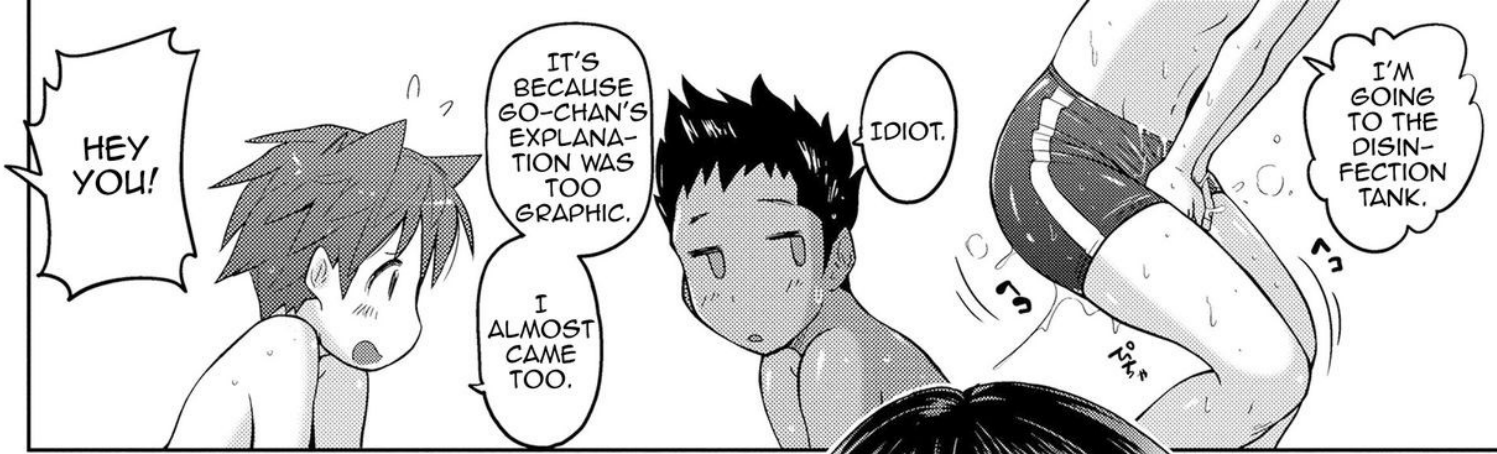
WHOA, WHAT ARE YOU DOING?

SHIT! I CAME.



WHAT IS IT?

AH!



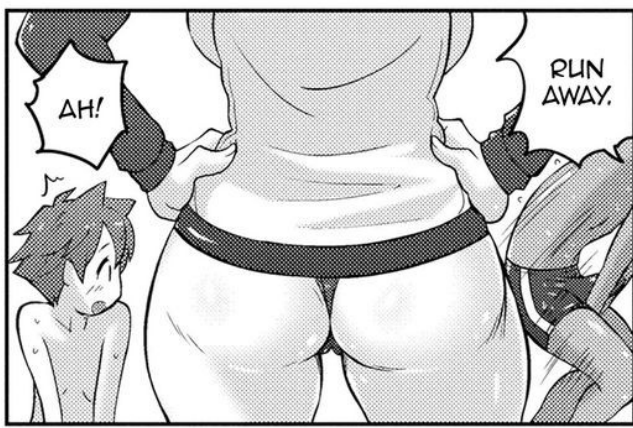
HEY YOU!

IT'S BECAUSE GO-CHAN'S EXPLANATION WAS TOO GRAPHIC.

I ALMOST CAME TOO.

IDIOT.

I'M GOING TO THE DISINFECTATION TANK.



AH!

RUN AWAY.



YOU'RE PLAYING HOOKY HERE AGAIN!



SINCE I TOOK THE TROUBLE OF GOING TO BUY THOSE BRIEFS YOU SHOULDN'T PLAY HOOKY.

UM, I WAS GOING TO SWIM BUT...







HM?



MOCHIZUKI-KUN, DO YOU WANT TO HAVE SEX WITH SENSEI?

IT'S NOT LIKE THAT,



I'M NOT SURE.

I...



モニー...

IT'S JUST THAT...



LET'S HAVE A HEALTH CLASS HERE.

CONCERNING BOYS AND SEX.

YOU CAN'T GO TO THE POOL WHEN YOUR DICK IS LIKE THAT.



クス:



THEY'RE SO SOFT.

YOU CAN GRASP EVERYTHING THROUGH THE THIN SWIMSUIT.

SO THAT'S WHY SHE ALWAYS WEARS A JERSEY.

BOOBS.

THESE ARE BOOBS.

SENSEI'S BOOBS.



HER SWIMSUIT IS STRETCHING.

ISN'T SHE EMBARRASSED?

WARM.

THIS IS A WOMAN'S BODY.

SO GROWN UP.



GO-CHAN LIED.

HUH? IT'S NOT BIG ENOUGH TO GET A DICK INSIDE.

HERE'S THE SLIT.

IT'S NOT A DICK BUT IT HAS THE SAME SHAPE.



BECAUSE A DICK GETS HARD POINTING UP

BELOW HER CROTCH.

IT'S SPLIT FACING THIS DIRECTION.

HUH? IT GOT BIGGER.

YOU CAN INSERT A DICK HERE.

IT'S DEEP HERE.





AH

UWA

SENSEI!

MY DICK STILL

HAS SEMEN IN IT.

YOU GOT SO BIG.

SENSEI IS FINE WITH IT.

ARE YOU EMBARRASSED BECAUSE IT'S HARD?

HII

HII HII

AAH!

DI-RECT LY?

EH, DIRECT-LY?



UWA AH!

YOU PUT IT ALL INSIDE YOUR MOUTH.

EH!? THE WHOLE LENGTH.

AAH! YOUR TONGUE!

YOUR TONGUE!

AH NOO!

IT'S EMBARRASSING IF YOU PULL UP MY BRIEFS.

PULL THEM BACK.



YOU CAN'T, IT'S EMBARRASSING NAKED.

I'M TAKING IT OFF.



WITH ME?



SEX.

PUT IT IN?

WILL YOU PUT IT IN?

DIDN'T YOU WANT TO KNOW HOW SENSEI HAS SEX WITH A MAN?



MOCHI-ZUKI-KUN IS A MALE, SENSEI IS A FEMALE.

MALES LET IT OUT WHEN THEY COPULATE WITH FEMALES

SPERM ISN'T DIRTY,

YOU DRANK MY SPERM?



YOU REALLY INSERT YOUR DICK.

YOU REALLY INSERT YOUR DICK IN HER CROTCH WHILE MAKING OUT.

YOU INSERT YOUR HARD COCK INSIDE THE SLIT WOMAN HAVE IN THEIR CROTCH WHILE MAKING OUT.



GO AHEAD.

THEN OPEN A HOLE IN MY SWIMSUIT.



WHAT'S WRONG? COME.



THE CROTCH I SAW IN THE POOL.



I'M GOING TO PUT MY DICK INSIDE SENSEI'S CROTCH.



MY DICK WILL GO INSIDE...

IF I MOVE A LITTLE BIT FORWARD...



MY SPERM IS GOING IN.

STOP.

MY DICK FEELS FUNNY.

HUH? HUH?

NO!

STOP!

SENSEI'S BODY.

ah

AHN

IT CAME OUT AGAIN.

AH, IT CAME OUT.



NO, I STILL WANT TO BE WITH SENSEI.

GOOD.



I DON'T KNOW.

DOES IT FEEL GOOD?

DO WE STOP??

IS IT ALWAYS LIKE THIS?

I DON'T KNOW, IT'S MY FIRST TIME.



IT'S SO DEEP.

ALL THE WAY TO THE BASE!

IT'S INSIDE! SENSEI! I'M STICKING IT IN!

DOES IT HURT?

MF
LU
LU
LIN

IT'S FINE.



I'LL INSERT IT FOR YOU SO GRAB ON TO ME.

OKAY.



IT WENT IN!

AA
AA
AH!



HERE?

YOUR DICK IS SHIVERING INSIDE ME.

OR...

HOW DEEP DO YOU THINK IT IS?

AROUND HERE?

AH AH, NO, I'M GOING TO CUM AGAIN!



IT'S OK, YOU CAN CUM INSIDE.

I'LL CUM INSIDE SENSEI'S BELLY.

PULL OUT!



AGAIN, THE KIND SENSEI.

BUT...

BUT...

SE... SEN...

IT'S FINE.



End