



This heavy collar is a standard piece of daily elementary school attire designated by the Imperial Board of Female Education. The collar is built using a special low-density alloy which weighs less than 1.5 kg while retaining extraordinary durability.

As it is obviously impossible for an elementary student to break out of even an ordinary collar, the purpose of the metal lock, is less to physically restrict than it is to mentally subjugate its wearer.

The origin of the red, white and black color scheme can be traced back to the Nazi regime of centuries past. The Imperial Emblem located in the center serves as a symbol of absolute rule over women within the Empire.

The solid metal padlock adjacent to the collar also impacts the student's consciousness, taking advantage of their formative years to cultivate them as obedient sex slaves.

This combination of collar and padlock is an actual part of a standard set of government-issued restraining equipment, which explains the ubiquity of such locking devices, be it on walls, lamp posts, sidewalks, or outside of shops. A compact version for household use has also proven to be quite popular. The device can not only be utilized to restrain school children, but also to secure 'dogs'. [Referenced in detail in a separate work in the series], and slaves, essentially making them imprisonment facilities widely available for public use.

Since numerous areas prohibit females from entering, and even places accessible for females such as supermarkets have become few in number, the government has provided these locking stations to allow for easy securing of the female companion when entering restricted areas. The procedure is simple and comparable to securing a bicycle.

In the Empire, some mothers collect leftover semen, urine, and other bodily fluids from sexual intercourse for their daughter to drink the following day. In order to avoid waste, the mother will occasionally discard condoms directly inside the bottle immediately after use.

Although not practiced by every household, a considerable portion of the male population requires their daughters to drink these love concoctions to satisfy their own perverted desires.

The girl's hands and feet are fitted with metal restraints which are affixed by means of steel nails which penetrate the bone. All restraining devices are worn from a very young age and require regular replacement as well as sterilization of the wounds so as to prevent the steel nails from negatively affecting growth, while ensuring that they leave a permanent opening inside the bone.

The use of such a complex binding method owes to the fact that students instinctively tremble and struggle when receiving 'education.' This skeletal fixation device can therefore be combined with an array of apparatus to restrain the body to a maximum degree.

The permanent openings which remain inside the bone provide the base for more complex lock contraptions to be worn in adulthood.



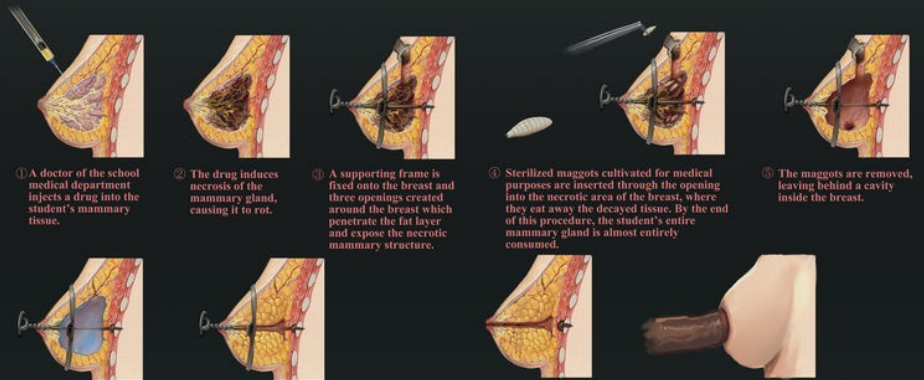
Upon removal of the waist nipper, brassiere, and urine canister, the student retains a part of the apparatus on her body.

Due to the daily administration of hormonal accelerators, Imperial girls undergo much more rapid sexual development than previous generations; it is entirely common for the first menstruation to occur at the age of ten and breasts to begin developing from the age of six to seven.

(The tube inserted inside the urethra is linked to the urine canister. Due to the depth of the insertion, the catheter is not removed unless necessary.)



The Empire classifies female breasts into four major categories: ornamental type, lactating type, functional type, and mammary intercourse type (Imperial-style mammary intercourse does not involve placing the penis between the breasts, but rather penetration of the mammary duct). Each student undergoes a number of basic remodeling procedures based on the specific requirements of the customer, with only the mammary intercourse restructuring procedure being depicted below as an example. (The following is a simplified diagram of a complex operation.)



① A doctor of the school medical department injects a drug into the student's mammary tissue.

② The drug induces necrosis of the mammary gland, causing it to rot.

③ A supporting frame is fixed onto the breast and three openings created around the breast which penetrate the fat layer and expose the necrotic mammary structure.

④ Sterilized maggots cultivated for medical purposes are inserted through the opening into the necrotic area of the breast, where they eat away the decayed tissue. By the end of this procedure, the student's entire mammary gland is almost entirely consumed.

⑤ The maggots are removed, leaving behind a cavity inside the breast.

⑥ At this stage, the breast has completely lost the ability to further develop. In order to maintain the shape of the breast, a semi-viscous nutrient solution is injected into the breast cavity once the openings of the breast are healed.

⑦ The nutrient fluid contains drugs which stimulate the accumulation of subcutaneous fat, causing the empty breast interior to once again fill with fat. At this stage, the breast regains its original appearance prior to modification. Although the fat does not naturally develop alongside the mammary gland with age, it is possible to regulate its amount and allow for further accumulation and subsequent enlargement of the breasts with continued drug administration.

⑧ Once the supporting frame is removed, the basic remodeling of the breasts for mammary intercourse is complete. This represents the limit to which it is possible to remodel students at this age. Suffice to say, the breast depicted is merely a specimen and would require further extensive remodeling to be considered genuinely suitable for mammary intercourse. A complete set of breasts can be equipped with an array of functions such as artificial milk ducts or an artificial vagina, which is achieved by transplanting either affordable silica gel granules, or expensive autologous cells which recreate a vaginal environment inside the nipples. However, such advanced remodelling procedures are left to the determination of the future owner.

Despite enabling mammary intercourse, the obvious shortcoming is the breasts' inability to lactate milk. Moreover, excessively large cup sizes are more prone to sagging. Once medication is halted, the mammary fat rapidly recedes, causing the breasts to wither and shrivel.

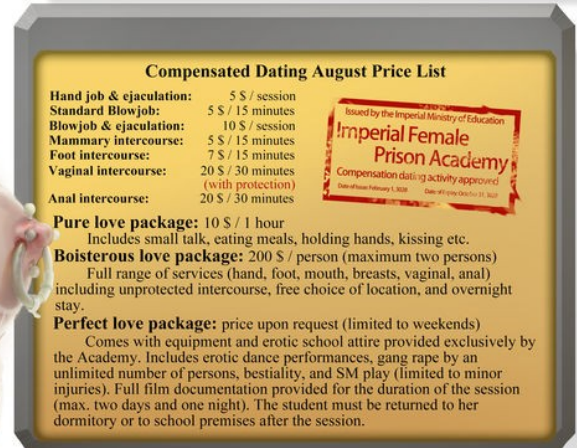
THE ACADEMY



Student identity card Front



Back



The Imperial Ministry of Female Education requires all female students who advance to secondary education to participate in compensated dating projects mandated for both public and private schools. All around the country, students are obliged to utilize their weekend time to engage in compensated dating activities.

The Imperial sex industry is extraordinarily competitive and engages in all types of services which are ubiquitously available. For the men of the Empire, seeking out such locales is as normal an activity as stopping by a fast food restaurant or having a leisurely smoke. Each establishment controls its own territory by partnering with various gangster organizations, which is why even unaffiliated prostitutes rely on good relations with these organizations to conduct unrestricted business. More often than not, bloody struggles over territory and customers ensue without regard for human life. Yet regardless of how heated the dispute among the brothels becomes, there is a tacit agreement between all parties to not involve students engaged in compensated dating. This arrangement encompasses other forms of cooperation such as the handing over of clients.

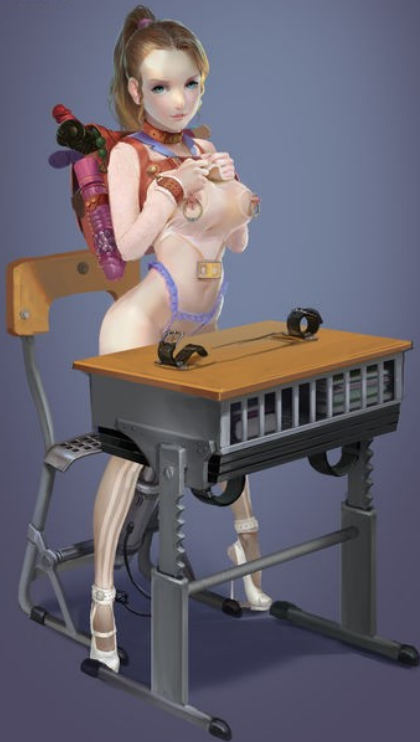
Owing to the generally low price of dating a schoolgirl, there is a sheer inexhaustible number of patrons who come in search of a new experience mature females can no longer grant them. Patrons who favor a particular student are also welcome to seek out her bedroom quarters at the school dormitory, which is open to the public 24 hours a day. Students attend class during the day and provide sleeping companionship during the night. They are not prostitutes, but are strictly referred to as sleeping companions in the sense that sexual intercourse is forbidden at the dormitory. Naturally, the use of hands, vibrators or similar toys is likewise prohibited. At most, it is permitted to kiss or caress their bodies. Many people simply come to enjoy conversation with the students or spend the night in their embrace. Bedtime at the Academy is set at no later than 1 a.m.

While these rules appear counterintuitive, they were established with extensive consideration given to the students' development, which can suffer potential impairment as a result of excessive sexual activity. Moreover, students who spend the night indulging in their patrons' escapades do not possess sufficient energy to attend class the following day.

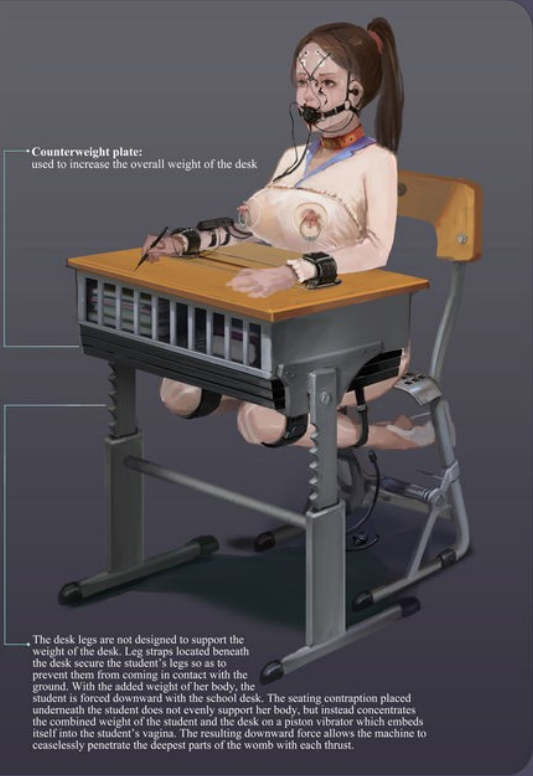
In spite of various rules, female student dormitories remain a popular location, and are frequently sought out by people who require accommodation for the night, such as traveling businessmen.

Despite their small size, each student bedroom is intricately designed. Fashioned in the style of a royal boudoir, warm rays of light gently guide the eyes of the beholder to the petite silhouette of the princess-like figure awaiting him, her delicate body robed in enticing garb. Sex ban notwithstanding, this truly sublime experience allows for the appreciation of the most tender and purest of sensations — the unadulterated fragrance of love. Particularly successful suitors may even receive an oral reward administered in secret.

It is in this place of rare tranquility that numerous men find peace of heart and come to fully enjoy the company of maidens whose purity and innocence harken back to the days of their first love. For this reason, Imperial female dormitories have often become the subject of movies and television programs.

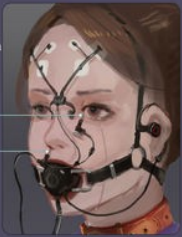


Counterweight plate:
used to increase the overall weight of the desk



The desk legs are not designed to support the weight of the desk. Leg straps located beneath the desk secure the student's legs so as to prevent them from coming in contact with the ground. With the added weight of her body, the student is forced downward with the school desk. The seating contraption placed underneath the student does not evenly support her body, but instead concentrates the combined weight of the student and the desk on a piston vibrator which embeds itself into the student's vagina. The resulting downward force allows the machine to ceaselessly penetrate the deepest parts of the womb with each thrust.

Probes inserted into the prefrontal cortex of the brain



All female students receive lessons while fastened to their seats. Simultaneously, auxiliary learning devices are attached to their heads. These learning instruments consist of three main parts: the first component is an electrode which is attached to the forehead, the second component comprises two probes which are inserted through the nasal cavity and the upper eyelid into the frontal lobe of the brain. The third component consists of earphones, a plug-in vocal silencer, and a stylus which reads the movements of the hand.

The two probes inserted into the frontal lobe of the brain comprise the most crucial parts of this device. The frontal lobe is mainly responsible for memory, judgment, analysis, as well as the thought and working processes of the brain. While removal of the frontal lobe was once falsely believed to be a cure for a number of mental illnesses, this cruel treatment method often produced a variety of serious residual effects and was clearly limited by the superficial understanding of the brain at the time. Modern Imperial medicine has since perfected the operation method while circumventing these issues.

The learning device is capable of stimulating the brain's frontal lobe and enhancing the student's memory, enabling her to follow and record the teacher's instructions, which is transmitted to her ears via headphones. The stimuli received using this traditional learning method are run through the learning device and amplified before being fed back to the brain, forming a strong stream of information which is subsequently inscribed into the brain.

At the same time, the auxiliary learning device interferes with the brain's capacity to judge, effectively overpowering any sense of doubt in the students and allowing them to fully absorb the teacher's instruction.

In reality, this complex equipment does not merely serve to improve student performance. Without the auxiliary learning device, it would be impossible for the students to muster the attention and energy to follow lessons while enduring the intense pleasure and pain, as well as resisting the urge to climax, as the piston vibrator lodged inside their lower bodies incessantly thrusts in and out of their orifices. All human sensations are transmitted to the brain via electric signals, which is why the auxiliary learning device emits signals of its own which effectively cover perceptions of pleasure and pain, thus allowing the students to go about their studies unhindered.

(This equipment is not without flaws. Due to the intense stimulation, it places an enormous strain on the brain. As a result, all classes at the Academy are taught in half-hour intervals, with twenty minutes of recess in between. Nevertheless, the students are strained to their limits. Using the auxiliary learning device for more than 30 minutes may result in various side effects such as hyperaemia, nosebleeds, and dyspnea in minor cases, and may further lead to seizures or loss of consciousness.)



Modern Sex Slavery Teacher



Academy Torture Instructor (Elective Course)