

禊駅0番線発

THE LAST TRAIN
DEPARTING FROM THE
STATION ON LINE 0.

最終列車



BUT TONIGHT,
THERE ARE
VISITORS TO
THIS TOWN THAT
DO NOT KNOW
ABOUT THESE
RUMOURS...

THERE'S SOME KIND OF
SUSPICIOUS RUMOUR GOING
AROUND ABOUT THE
LAST TRAIN LEAVING FROM
THE MISOGI STATION O.

IT IS SAID THAT FEMALE
CUSTOMERS RIDING THE
LAST TRAIN ARE TAKEN
TO A DIFFERENT
DIMENSION, NEVER TO
RETURN HOME.

COME ON
MISAKI, GET ON
THIS TRAIN THEN
WE CAN GET YOU
HOME.

US PRINCESSES
GET TO GO
HOME!

THE LAST TRAIN
HAS JUST
ARRIVED, SO YOU
HAVEN'T MISSED
IT YET...

TRAIN ATTEN-
DANT-SAN~

DID WE MAKE
IT IN TIME FOR
THE LAST
TRAIN?

電鉄

WE JUST CAME FROM A DRINKING PARTY, I'M TOO DRUNK LETS JUST TAKE THIS TRAIN.

WHAT'S WITH THE COUNTRY-SIDE, THERE ISN'T EVEN ANY TAXIS OUTSIDE THE STATION.



I'M TIRED FROM THE FESTIVAL, LETS JUST GET ON THIS TRAIN.

WHAT'S WITH THIS TRAIN?

IT'S OLD AND RICKETY, IT'S NO PRINCESS CINDERELLA'S PUMPKING CARRIAGE THAT'S FOR SURE.





IT'S HOTTER THAN A JUNGLE IN HERE, IT'S MORE LIKE A SAUNA.



THOUGH IT IS PRETTY HOT IN HERE BECAUSE OF THE TRAINS HEATING.

YOU OKAY MISAKO? THERE'S ONLY A LITTLE MORE TO GO...

EHEHE...



IT'S MIDNIGHT, THE TRAIN IS GOING SLOW ISN'T IT...



BY THE WAY, WHAT TIME IS IT RIGHT NOW?

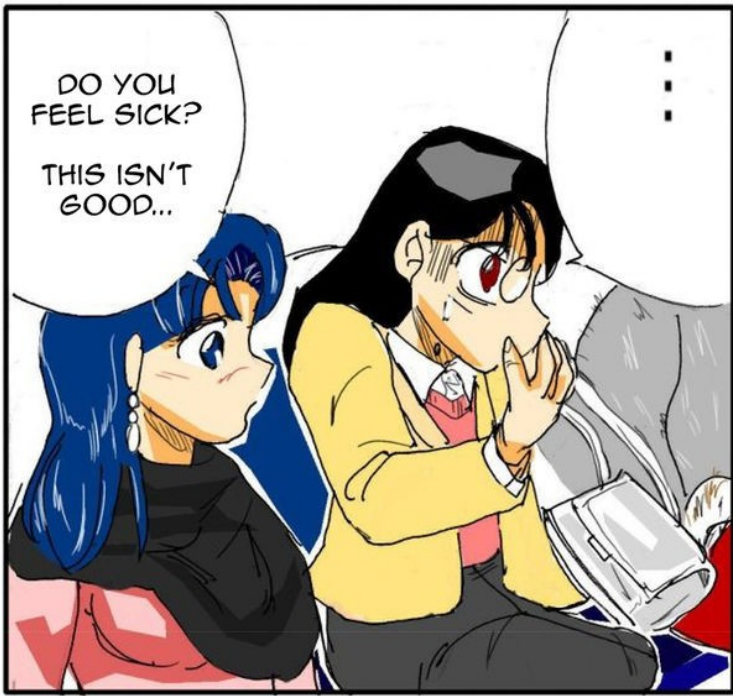


SNAP OUT OF IT ALREADY, DON'T YOU WANT TO GO TO BED?

WHY, A TRAIN? WHY COULDN'T WE GET A TAXI?



THE LAST TRAIN IS WAY BEFORE MIDNIGHT, THEN WHY...



DO YOU FEEL SICK? THIS ISN'T GOOD...

...





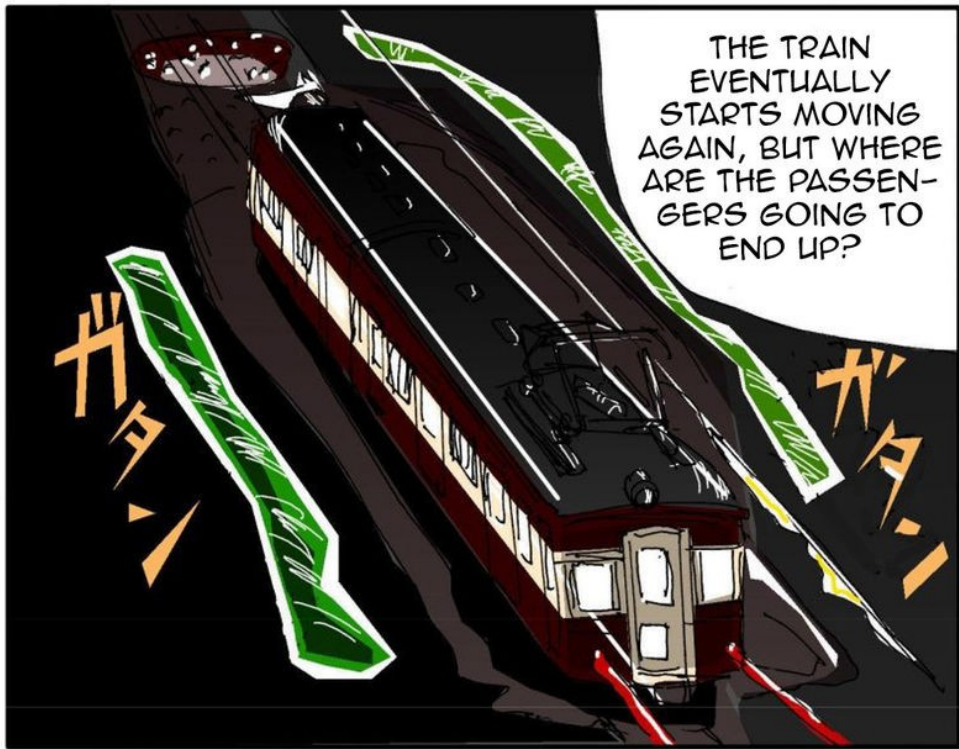
THIS IS SOME KIND OF GHOST TRAIN, I'M SURE WE'RE GONNA BE FOOD FOR SOME KIND OF MONSTERS.

WHAT'S GOING TO HAPPEN TO US?

CLOSE THE DOOR...



PLEASE HURRY ALONG, WE HAVE ENOUGH FOR UP TO SIX CUSTOMERS.



THE TRAIN EVENTUALLY STARTS MOVING AGAIN, BUT WHERE ARE THE PASSENGERS GOING TO END UP?



NOO~



WHAT'S THIS? SOME KIND OF ENTERTAINMENT? IT'S WRAPPING AROUND MY BODY AND SQUEEZING ME TIGHT.



ゴキッ
メシッ

ウニ
ウニ

AAAH~

ボゲッ
メキッ





AAH...
IT'S GOT
MY FEET.



IT MUST BE
BAD FOR
DIGESTION, AND
IT WANTS TO
ENJOY THE
TASTE OF A
WOMAN.

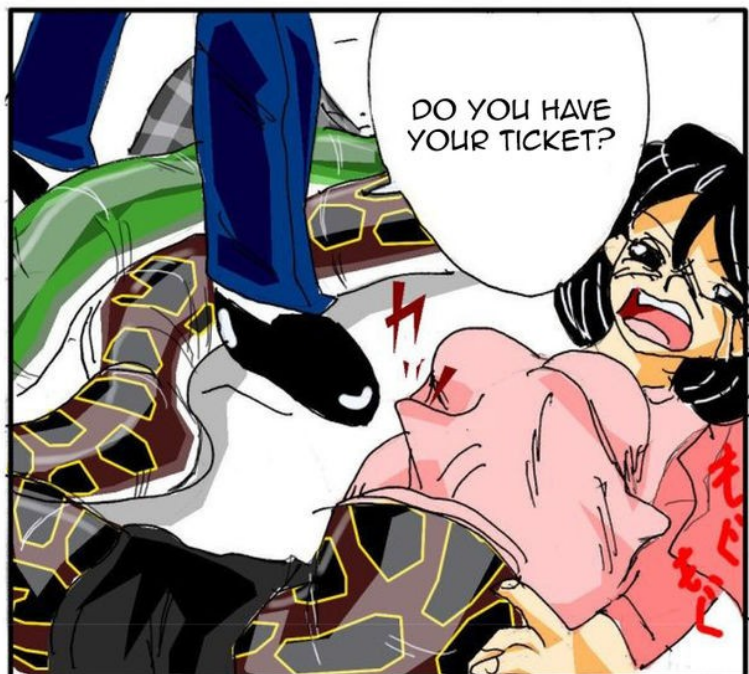
AAH...
WHY ARE THEY
REMOVING OUR
CLOTHES AS
THEY SWALLOW
US?



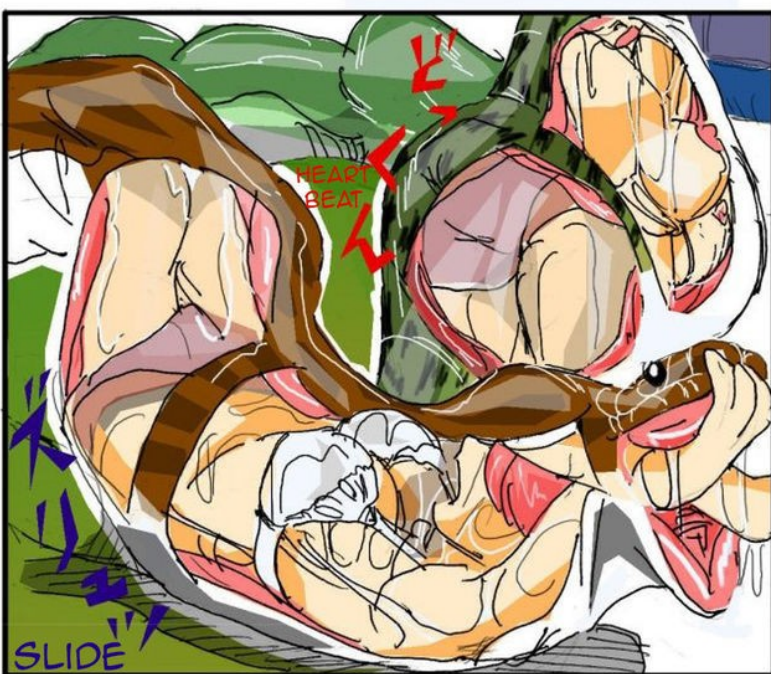
ズルッ
SLURPING

ONE AFTER
ANOTHER, EACH
ONE OF THEM
WAS SWALLOWED.

ズルッ
SLURP



DO YOU HAVE
YOUR TICKET?



ズルッ
HEART
BEAT

SLIDE



SIX HUMAN FILLED SNAKES...
SO THAT'S A TOTAL OF SIX PASSENGERS...



!



CONDUCTOR -SAN WHAT ARE YOU DOING?
AREN'T YOU GOING TO HURRY UP AND HELP ME...?



WE WILL SHORTLY BE ARRIVING AT SCALES WETLANDS, SCALES WETLANDS.



GULP



HAAU

SLIPPING



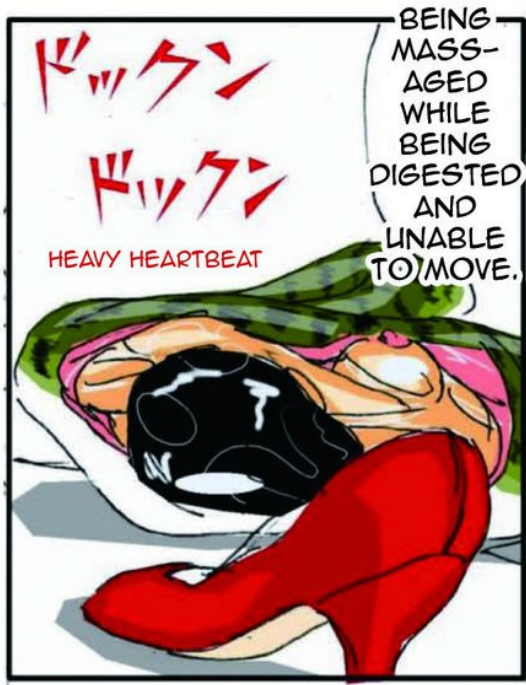
JUST ANOTHER NORMAL DAY.



WINDING



SQUELCHING



HEAVY HEARTBEAT

BEING MASSAGED WHILE BEING DIGESTED AND UNABLE TO MOVE.



THE WOMENS BODIES WERE BULGING THROUGH THE SNAKES SKINS.



THE TRAIN WAS FILLED WITH THE SOUND OF SCREAMS.

WET SMUSHING *ぐしゃぐしゃ*



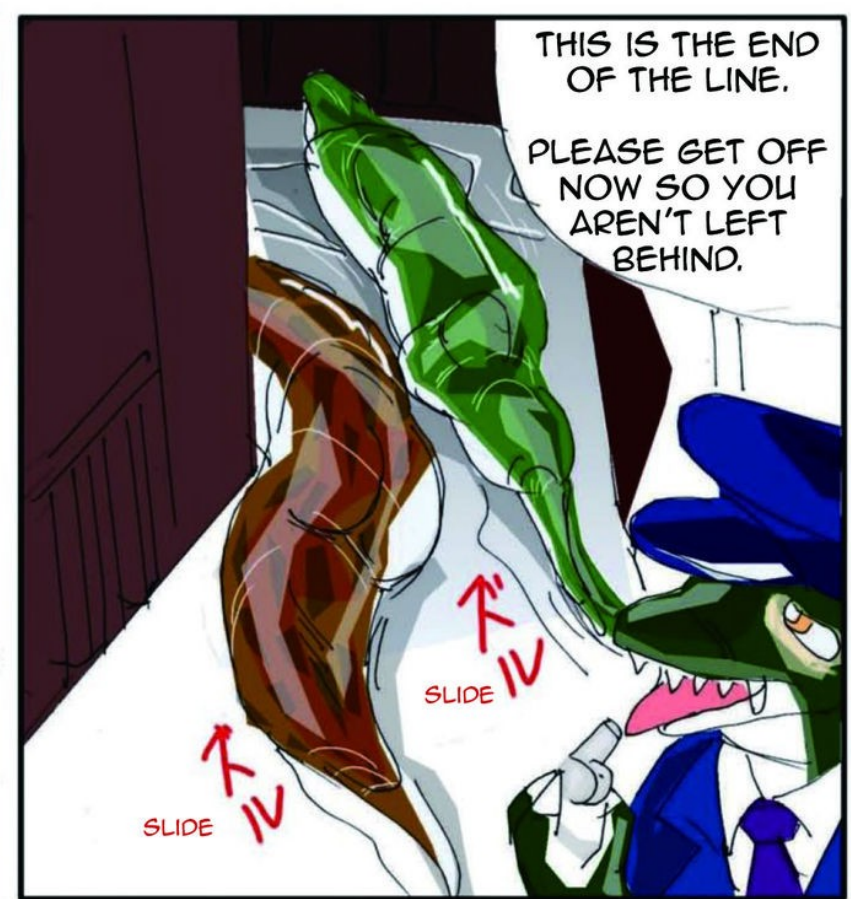
THIS SATISFIES THEIR HUNGER UNTIL THE END OF THE TRIP.



THIS TRAIN IS A SNAKE TRAIN. THE REAL CUSTOMERS ARE THE SERPENTS. CARRYING WITH THEM THE WOMEN FOOD.



AND SO THE LAST TRAIN OF THE DAY, THE SNAKE TRAIN, DEPARTS FROM STATION O.



THIS IS THE END OF THE LINE.

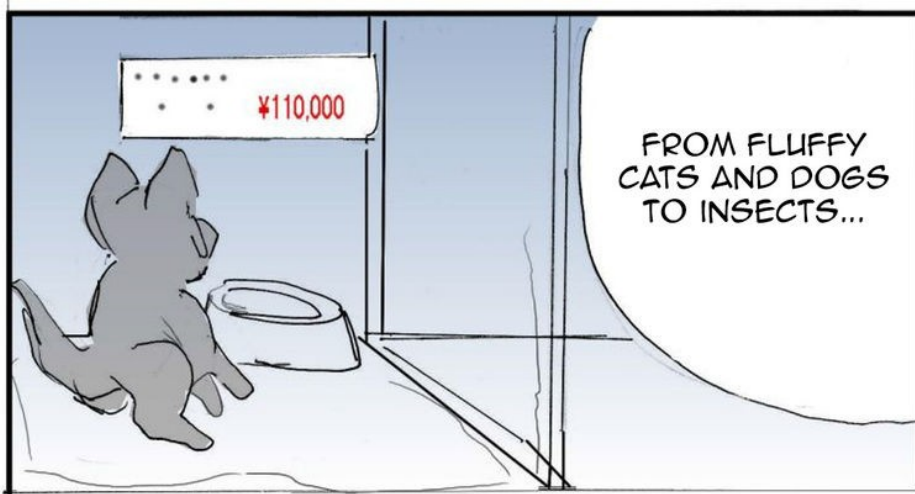
PLEASE GET OFF NOW SO YOU AREN'T LEFT BEHIND.

SLIDE *スライド*

SLIDE *スライド*

The pet shop

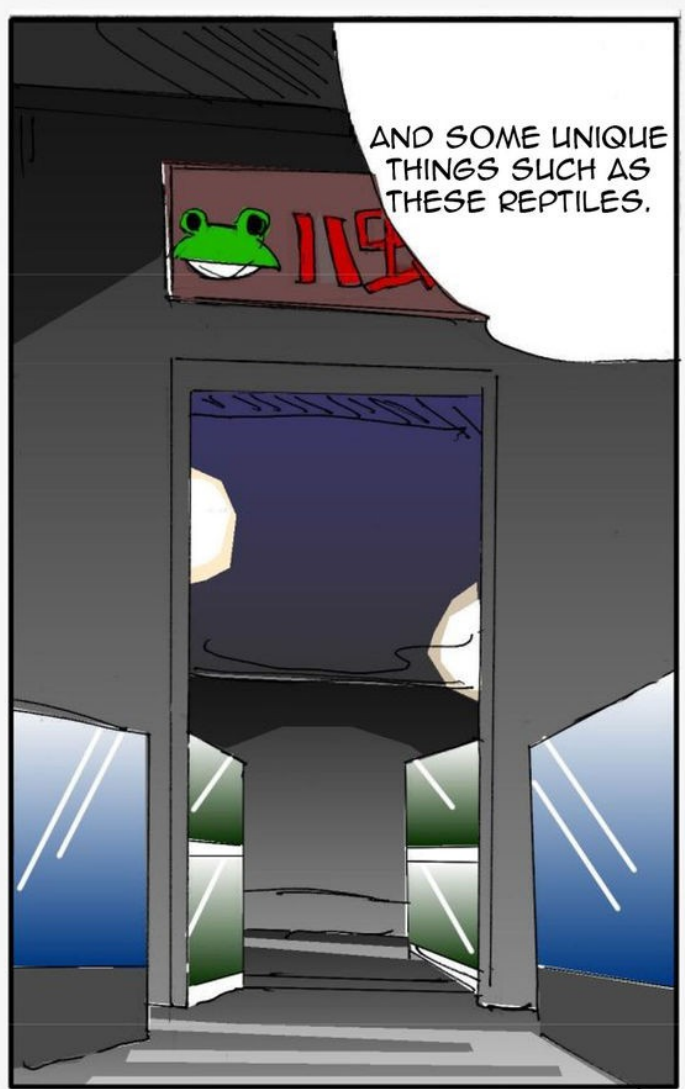




FROM FLUFFY CATS AND DOGS TO INSECTS...



THIS TRENDY PET SHOP SELLS POPULAR PETS.



AND SOME UNIQUE THINGS SUCH AS THESE REPTILES.



BUT IT CAN'T BE HELPED, THESE GUYS HAVE GOT TO EAT, EVEN IF I DON'T LIKE TO FEED THEM.



IT'S A BIT CHILLING WATCHING THEM SWALLOW THEIR FOOD WHOLE.

FEEDING THE SERPENTS IS THE ONLY THING I HATE...
THEY WILL ONLY EAT LIVING FOOD...

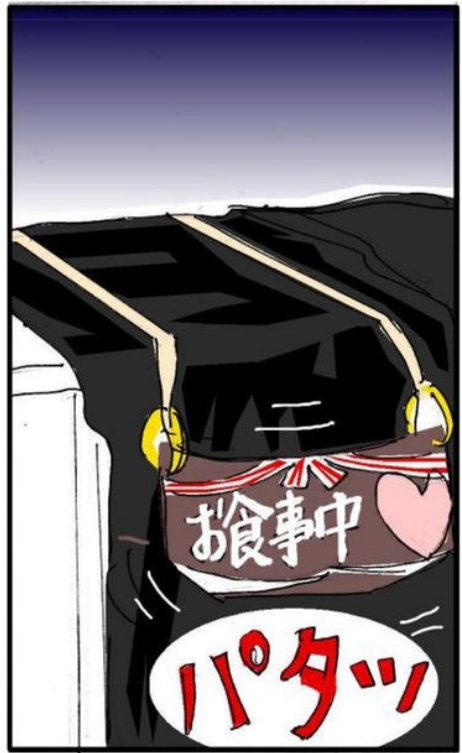
SIGN: EATING A MEAL.



HYAA~



AHN~
STOP STRUGGLING, JUST CALM DOWN.



THE HEAVY FOOD BAG HAS GOT A LOT LIGHTER, LOOKS LIKE THERE'S ONLY ONE LEFT TO DO...



I WANT TO FINISH THIS CREEPY FEEDING AS FAST AS POSSIBLE, IT'S A PAIN AS I'VE GOT SO MANY TO DO.



AAH~

ホムッ



バァ

バァ

WHAT ARE YOU DOING!?
LET GO OF ME!



バァバァ

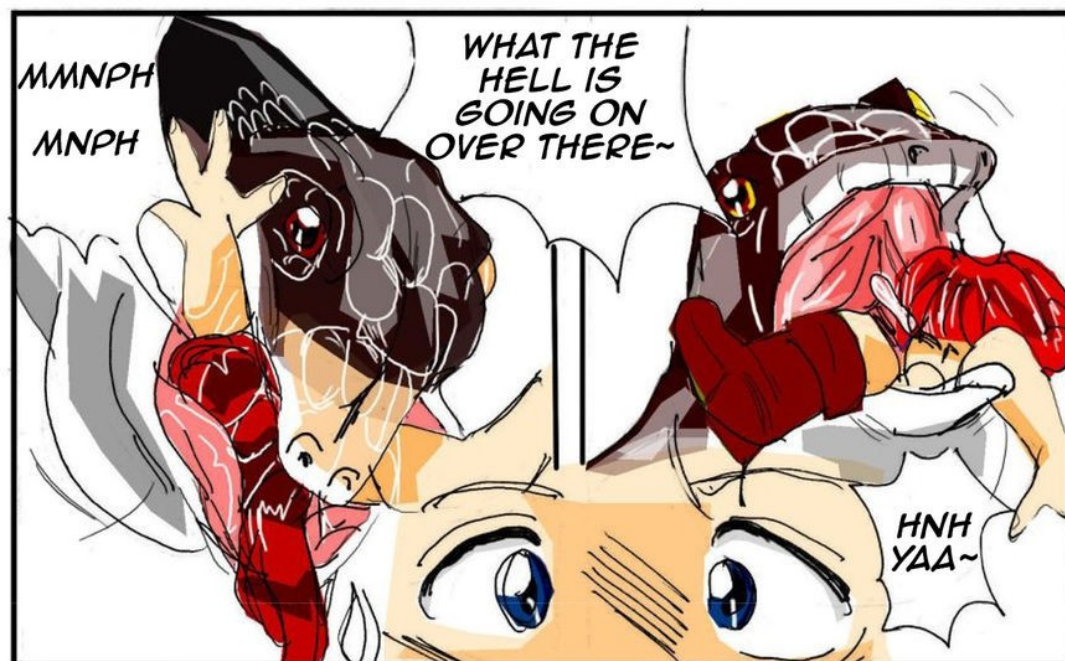


I'M IN A DIFFERENT PLACE THAN BEFORE.



OUUUCH

THAT WAS MEAN~



MMNPH
MNPH

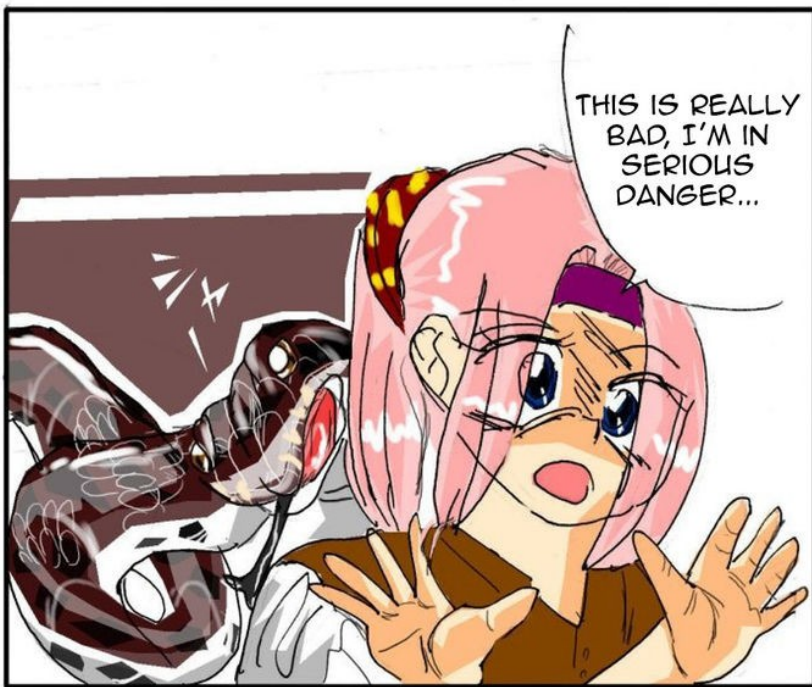
WHAT THE HELL IS GOING ON OVER THERE~

HNH
YAA~

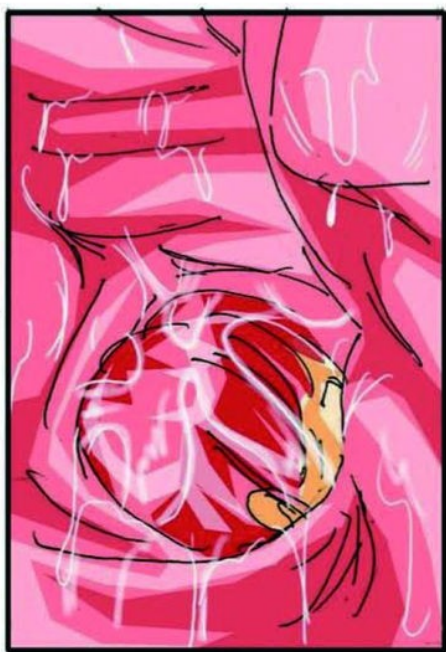


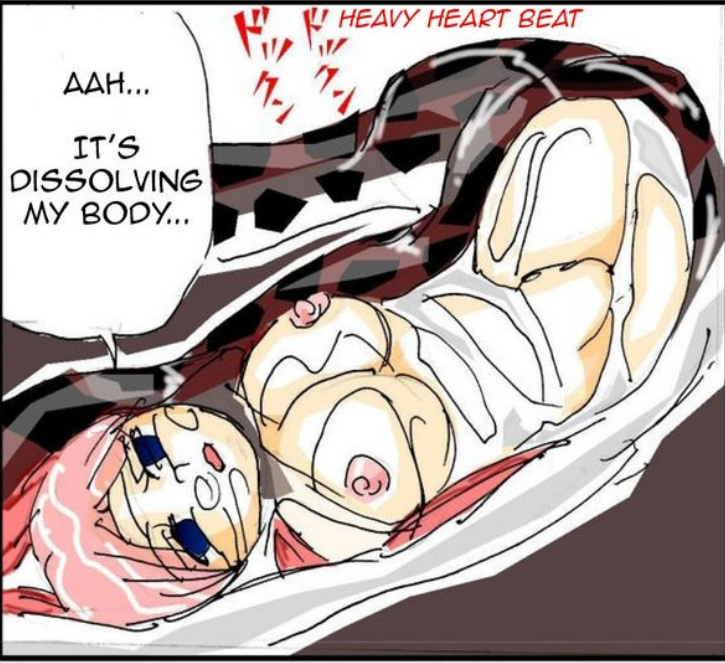
LOOKS LIKE I'VE BEEN MOVED TO SOME KIND OF GLASS DISPLAY AREA...











HEAVY HEART BEAT

AAH...
IT'S DISSOLVING MY BODY...



ズ
SLIDING DEEPER INSIDE

I'VE BEEN SLURPED UP AND SENT INSIDE..



THEY WILL END UP LIKE THIS. I FEEL SORRY FOR THEM, BUT THAT IS THE LIFE OF SERPENT FOOD, IT CAN'T BE HELPED.



AND THEN...



THEY WILL SPEND A WEEK DIGESTING AS FOOD...



FOR THESE CREATURES TO LIVE, SOMETHING LIVING NEEDS TO BE SACRIFICED.

THIS PROCESS REPEATS EVERY WEEK.



THOUGH, THOSE STOMACHS DO SEEM PRETTY LIVELY.

END