

OH, FUKA-MIDORI-KUN!

AND NOW IN THE '00 YEAR IT STARTS UP AGAIN...HM

STARTING FROM THE '90S THERE WEREN'T ANY SIGHTINGS AT ALL... HMMMM

86 TO THE 89TH YEAR WAS IN OUR NEW YORK BRANCH.

83 TO THE 85TH YEAR WAS THE HIROSHIMA BRANCH.

FROM THE 80 TO 82ND YEAR WAS KYUSHU BRANCH.

THERE'S SOMETHING I WANT TO ASK YOU ABOUT...

OH, MANAGER!

HERE'S A LITTLE RESTURANT THAT JUST OPENED SHOP CLOSE BY-

I didn't know that.

So that's what they're calling me.

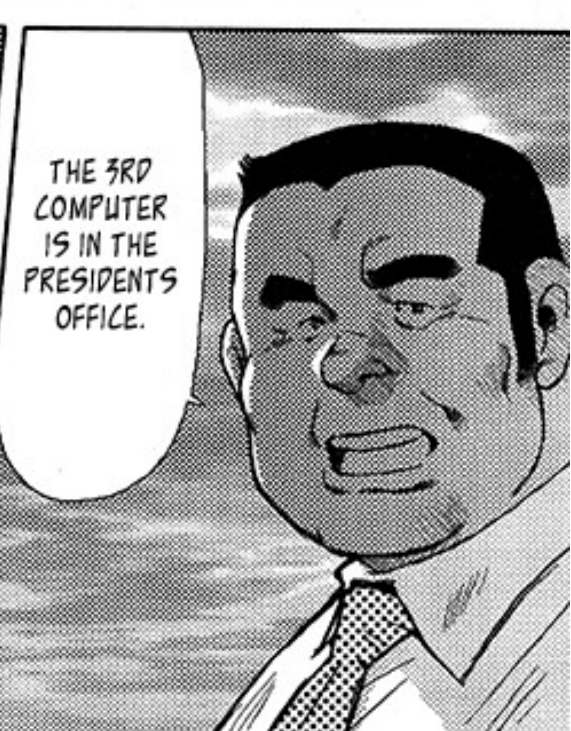
OH, THAT AGAIN?

IT'S THE MYSTERIOUS MASKED MAN OF COURSE.

IT'S ABOUT "BEAST" THOUGH.

SINCE THE 80'S UNTIL THE YEAR '89 BEAST APPEARED FREQUENTLY ACROSS MULTIPLE BRANCHES OF MARUNOICHI RIGHT?

WHAT'S THAT? BEAST?





WHAT DO YOU MEAN BY THAT? THAT'S-

THAT'S ABSURD!



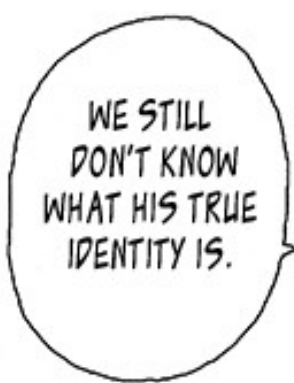
THERE IS A GUY WHO CALLS HIMSELF BEAST HERE.

BE CAREFUL,

YES.



I'M COUNTING ON YOU TANAKA.



WE STILL DON'T KNOW WHAT HIS TRUE IDENTITY IS.



IT'S A DIFFERENT GUY FROM BACK THEN.

YEAH, I KNOW.



YES, IN MY OFFICE.

COULD I HAVE A MOMENT OF YOUR TIME?

PRESIDENT, IT'S KUROIWA.



BEEP



IF WE ONLY KNOW THAT MUCH THAN IT'S OKAY THEN.

NO, WELL THAT'S ...

SO, WHEN DO WE GET STARTED THEN?



WELL THEN, I'M OFF.

IT WAS GOOD OF YOU TO COME BACK KUROIWA-KUN.



BUT EVEN THEN I STILL USED YOU ...

I DON'T HAVE ANY REGRETS.

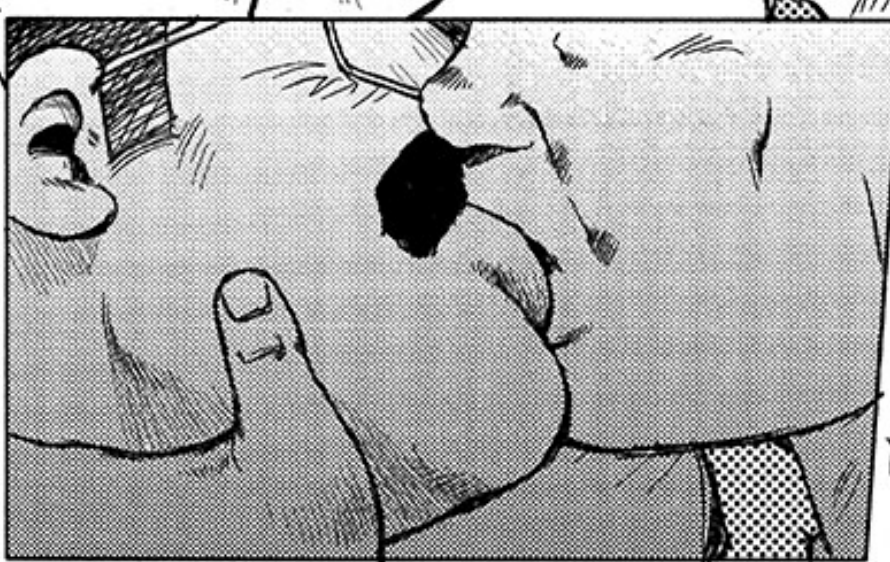


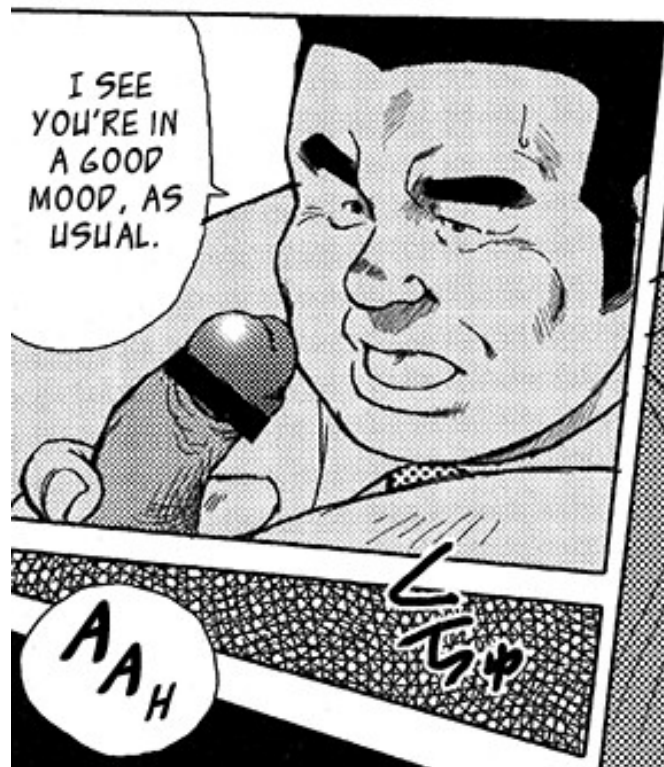
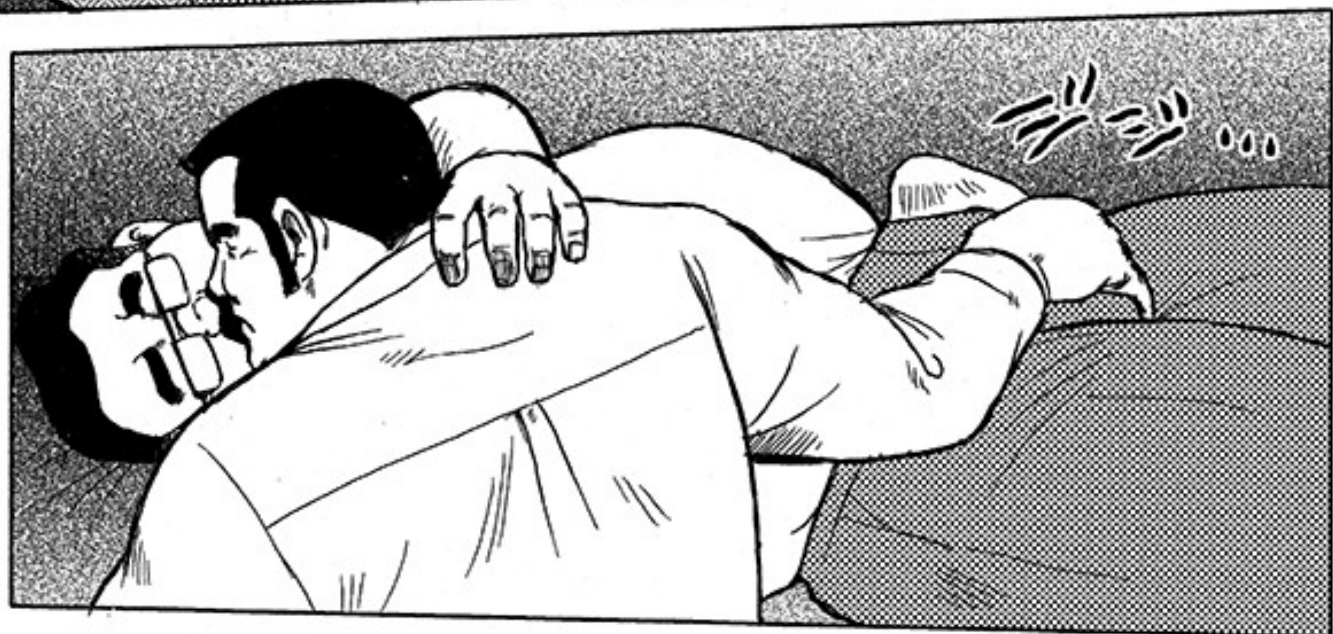
KURO ...

THAT'S ALL BEHIND US NOW, PRESIDENT.

I'M SURE YOU HAVEN'T YET FORGIVEN ME FOR WHAT HAPPENED.

EVEN THOUGH YOU HAD A WIFE AND KIDS...





President's Office
17:25

SPEAKING
OF SUSPICIOUS
PLACES...

WHERE
IS IT?

HM?

WHAT'S
THE POINT
OF THIS
EMPTY
CUPBOARD
PUT IN A
PLACE LIKE
THIS.

ON THE
BOTTOM
THERE ARE
SOME
RAILS...

LOOKS LIKE
I'VE FOUND
THE THIRD
COMPUTER
ROOM.

MMF

キラキラキラ

ガガガガガ



NO WAY ...

IT COULDN'T BE...



IS THIS SUPPOSED TO BE SOME KIND OF KEYHOLE ...



IT COULDN'T BE...

IF ALL YOU HAVE TO DO IS STICK SOMETHING IN THE LOCK THAT'D MAKE THINGS EASY BUT,

THE HEIGHT IS JUST RIGHT BUT, IT COULDN'T BE....



I...I GUESS I SHOULD TEST IT RIGHT? JUST A TEST...



お子
お子



Massaging

Increasing Pressure

Nudging

Minute Vibrations



ST... STUPID...

Calculating Length

Erecting



OH OH

Adjusting Pressure



WAI-AH!

THIS IS-

SO GOOD!



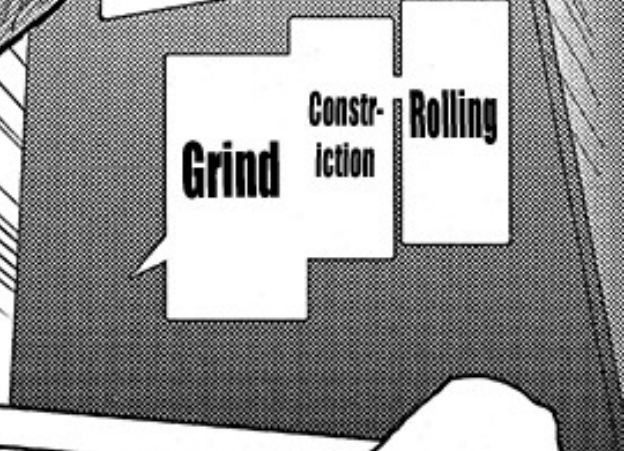
WHAT'S WITH THIS...?! THIS TECHNIQUE!

OOH?



Suction

Double Speed



Grind

Constriction

Rolling



OOH!



ERROR

ERROR

INCOMPATIBLE

THIS THING IS QUITE THE SPECIALIST

HUU HUU

HM?

WHAT THE?

ERROR

ERROR



THE PRESIDENT, OR MAYBE

SO IT TAKES A SPECIFIC GUY TO BE ABLE TO OPEN THIS?

LOOKS LIKE I'VE FIGURED OUT HOW IT WORKS...

ALTHOUGH IT'S PRETTY STUPID.



GULP

NATURE OF OFFENCE!

A GUY WHO'S CLOSE TO HIM?

YOU'RE
BEAST!?

NO WAIT!
I KNOW
WHAT THIS
LOOKS
LIKE BUT
IT'S NOT-!

DAMNIT
LET ME
OUT...!

HMPH

JUST
WHO ARE
YOU?!

I HAVE NO
IDEA WHAT
YOU'RE
GOING ON
ABOUT.

**SUPER
ERECTOR
GENIE**

TRYING TO
ACCESS THE
PRIVATE
INFORMATION
IN THE THIRD
COMPUTER
ROOM IS YOUR
CRIME
!!

I HAVE
CONFIDENCE
IN MY ASS,
YOU WON'T
MAKE ME
TALK WITH
THAT!

SOMETHING
LIKE THAT
WON'T WORK
ON ME!

AIBA?

ARE YOU
FROM
YAMA-
NOTE?

I SHOULD BE
ASKING THAT,
WHO ARE
YOU?

DESTROY

INSER
-TION!!

OH, IS
THAT SO?

OH

DIG

GOU
AAH

OH

DIG

JUST THIS-!

COMPARED TO THAT PERSON IT'S....

HMM ?

HOW'S THIS?

PULL OUT

AAH

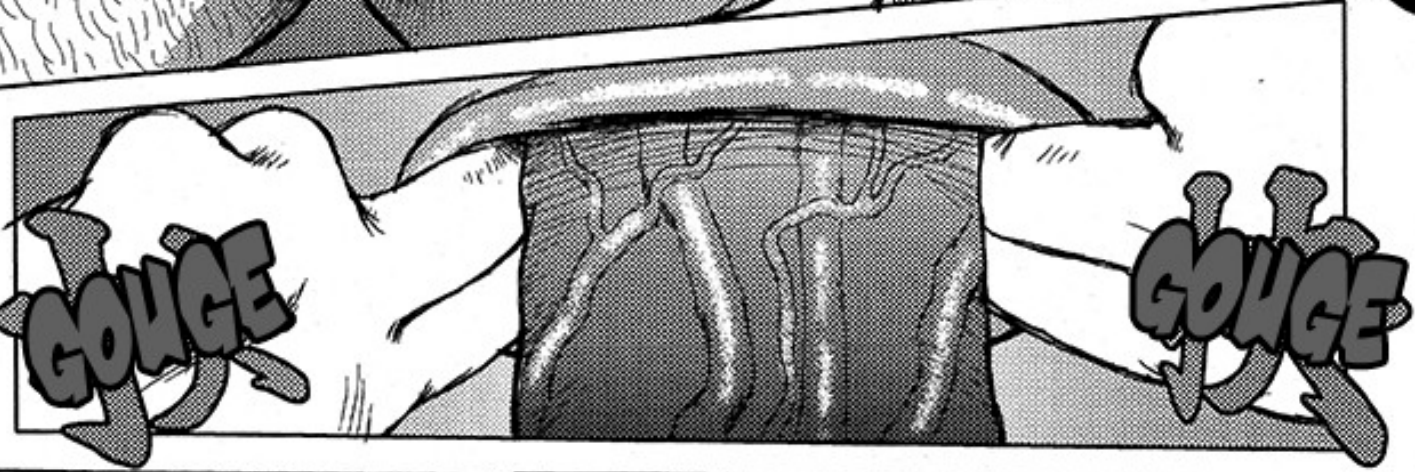
STRETCH

FILL

OPEN

EXPANSION!

PREPARE YOURSELF



And here I was wondering what kind of guy the second generation was, what a joke!



WHO ARE YOU!?

PULL OUT



SLASH



You are just a fool who continues to help Marunoichi without knowing what they're doing in the shadows!

KH-

SNAL

PROOP!

**I SEE! THE
ONE WHO
APPEARED IN
MARUNOCHI
DURING THE
80'S WAS YOU!**

**NOW YOU'RE
WORKING WITH
AIBA AND
YAMANOTE
TO CRUSH
MARUNOICHI!?**

**Prepare
yourself!**

**BODY OF
ERECTILE
TISSUE
FILLED
WITH
BLOOD**



I WILL PROTECT MARUNOICHI!!



I will destroy Marunoichi!!



**PUNISH-
MENT**

Divine



THAT'S RIGHT AND THEY ARE BOTH WONDERFUL~!

THEY'RE MINE~

THERE ARE TWO BEASTS?

Meanwhile...
Sales Department Three

EH?