

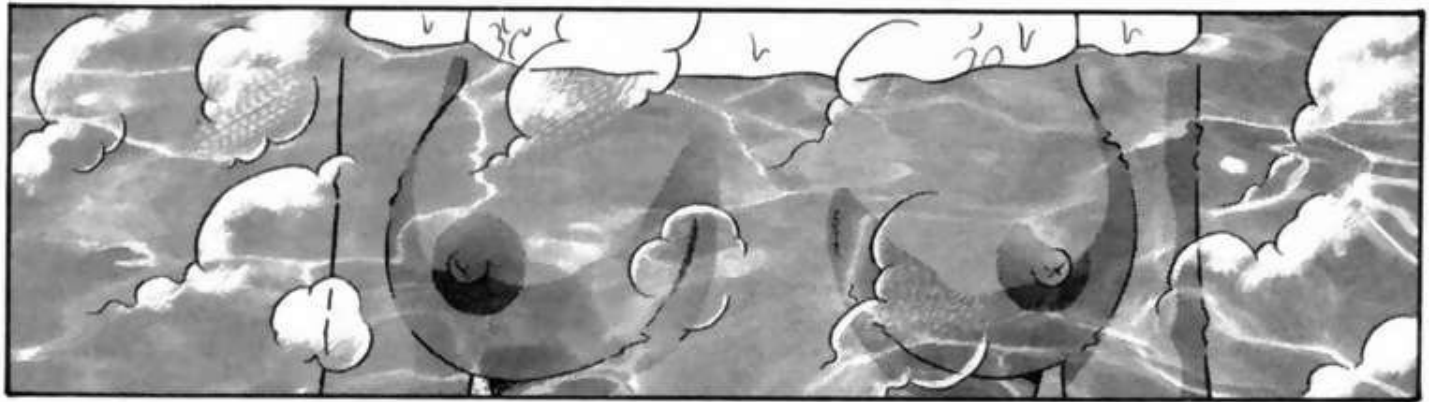


I SPENT THE
NEW YEAR'S
HOLIDAY IN
MY FATHER'S
HOMETOWN

INTIMATE FRIEND

たのび

Jun Nitta



Y-
YEAH
...

WHAT DO
YOU THINK,
TSUBASA-
CHAN?
THE BATHS
IN THE
COUNTRYSIDE
ARE NICE AND
BIG, AREN'T
THEY?
NOT LIKE
THOSE IN
TOKYO



BATHING
TOGETHER
WAS NEVER
AN ISSUE

BECAUSE MY
COUSIN, HITOMI,
AND I ARE 7
YEARS APART...



COME,
TSUBASA-
CHAN

I'LL
WASH
YOU



AH~

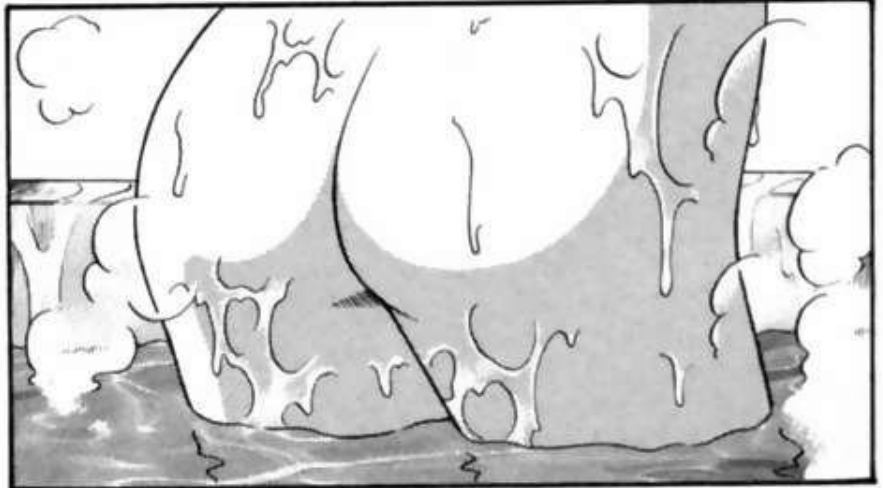
ガァッ



EH?
WHAT'S
THE
MATTER?

I-...
IT'S OK...

I'LL
WASH
MYSELF



SO, THAT'S
WHAT'S BEEN
BOTHERING
YOU...

AHAHAHA

OH...

C'MON!
DON'T
ACT SO
RESERVED

GRAB

ザバッ

AH!

IT JUST
PROVES
YOU'RE
GROWING UP
HEALTHILY,
THAT'S ALL

ゴシ
ゴシ

LISTEN,
TSUBASA-
CHAN,
IT'S QUITE
NATURAL
FOR A BOY'S
PENIS TO
GET HARD
WHEN HE
SEES A
NAKED
WOMAN

IT'S
NOTHING
TO BE
ASHAMED
OF





O-...
OK



LOOK HOW PROUD
AND CONFIDENTLY
I'M SITTING HERE.
SHOW SOME
CONFIDENCE TOO,
TSUBASA-CHAN!

C'MON,
BOYS
SHOULDN'T
BE
COWARDS!



ALRIGHT,
DONE.
NOW STAND
UP AND
FACE ME
SO I CAN
DO THE
FRONT

EH
...?
BUT
...



YOU'LL
BE A
MAN
SOON

AND YOU
HAVE SUCH
A NICE
LOOKING
PENIS TOO!



YES,
THAT'S
THE
SPIRIT!

LOOK
HOW
HAND-
SOME
YOU ARE,
TSUBASA-
CHAN!



MY... MY PENIS...

HI-... HITOMI-ONEECHAN ...

FEELS KINDA FUNNY... IT'S LIKE A TINGLING FEELING



A-

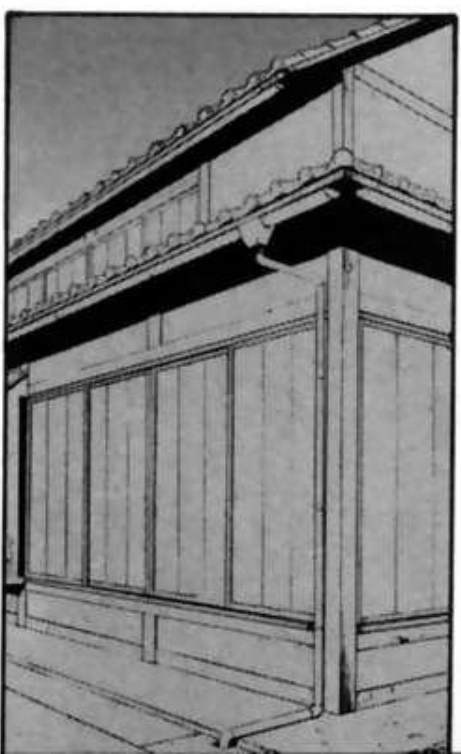
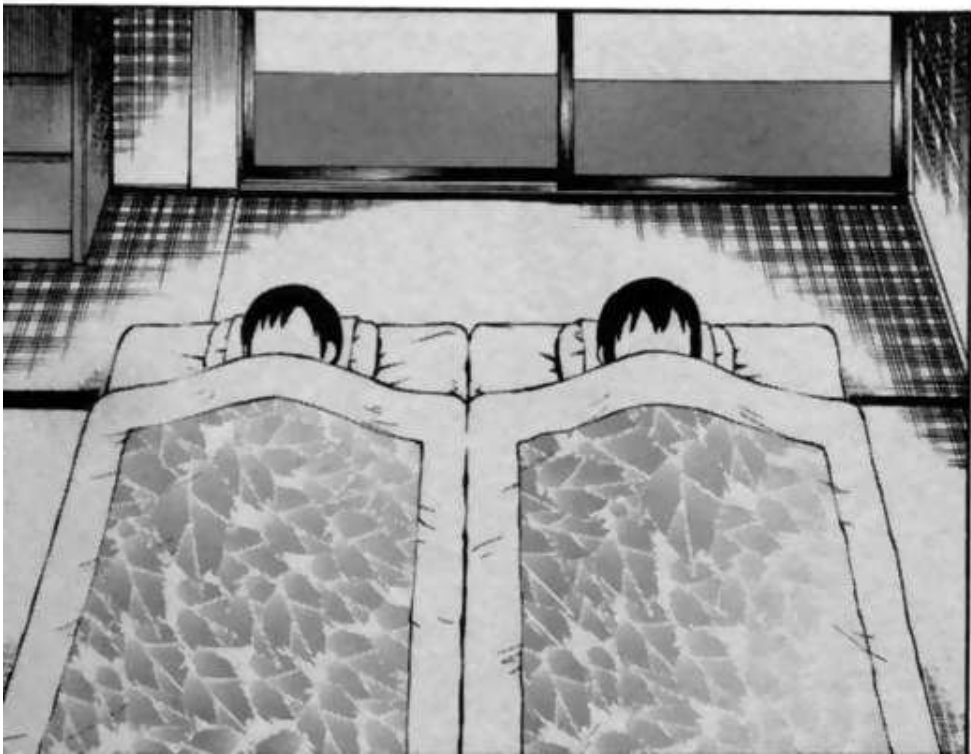
I'LL GIVE YOUR SPECIAL PLACE A GOOD WASH FOR YOU



MORE PROOF THAT YOU'RE GROWING UP



HAHA! I'M GLAD!





HITO-
MI-
ONEE-
CHAN
...



IT
FEELS
SO
GOOD...

I
WONDER
WHY...
WHEN
I
PLAY
WITH
IT...





WHAT'S WRONG, TSUBASA-CHAN? I'VE HARDLY SEEN YOU SINCE THIS MORNING

Y-

HAHA! I SEE YOUR PENIS IS HARD TODAY AGAIN, TSUBASA-CHAN!

THE NEXT DAY
NEW YEAR'S EVE

YEAH

ビクンビクン

チッ
アッ



LAST NIGHT...? THINKING ABOUT HOW YOU PLAYED WITH YOURSELF?

LIKE MAYBE ...

IS SOMETHING ON YOUR MIND?

EH!

AH-





EH!?

IT FELT GOOD, DIDN'T IT?

HOW DO YOU KNOW?



WHEN I WOKE UP, I SAW YOU PLAYING WITH YOUR PENIS RIGHT OVER MY FACE!



YOU REALLY GAVE ME A FRIGHT, YOU KNOW

Y-... YOU KNOW ABOUT THAT!?



TSUBASA-CHAN, DO YOU KNOW WHY YOU HAVE A PENIS?

AH-



WHEN YOU PLAY WITH A PENIS, IT'S SUPPOSED TO FEEL GOOD

WELL, ...



A MAN AND A WOMAN CAN GET INTIMATE WITH EACH OTHER

IT'S SO THAT





HI-...
HITOMI-
ONEECHAN,
CAN YOU
FEEL LIKE
THIS TOO,
EVEN
THOUGH
YOU DON'T
HAVE A
PENIS?



AH, THE
NEW YEAR'S
EVE BELL
AT THE
TEMPLE HAS
STARTED
RINGING



GIRLS HAVE
A FEEL-GOOD
PLACE TOO

OF
COURSE
I CAN!



Y-...
YES

WANT
ME TO
SHOW
YOU?



o-
ok

HERE'S
MINE...
TRY
TOUCHING
IT

TSUBASA-
CHAN



WELL,
GO ON



AH





Y-...
YEP

DOES IT
FEEL GOOD
WHEN I
TOUCH
HERE?



IT
FEELS
SO
SOFT...

AND IT'S
GETTING
A LITTLE
WET...

ゴ
オ
オ
オ
ー
ー
ー
HM



TSU-
BASA-
CHAN,
GO LIE
DOWN
OVER
THERE

TH-
THAT'S
ENOUGH
...

HAH

HAH

AH...
HMM



HM...
HAH

ゴ
ゴ

ピ
ピ

ズ
ル
ズ
ル



LOOKS
KINDA
STRANGE
...

IT'S
SO
DIFFE-
RENT
FROM
A
PENIS...

グ
ニ
グ
ニ
ズ
ル
ズ
ル

HITOMI-
ONEECHAN
...?

ゴ
オオオオ
オオオオ

O-OK...
WHA...
WHAT
ARE YOU
GOING
TO DO?



LET'S
BECOME
MORE...
INTIMATE...

TSUBASA-
CHAN...

YOU'RE
PROBABLY
A LITTLE
TOO YOUNG
FOR THIS,
BUT...





Y-YOU
PUT MY
PENIS
INSIDE OF
YOU?

HUH
...?

HAH

HAH



アアアア



ムムムム

ムムムム



THAT'S
WHERE
A PENIS
IS
SUPPOSED
TO GO IN

ゴ"オオ"ン

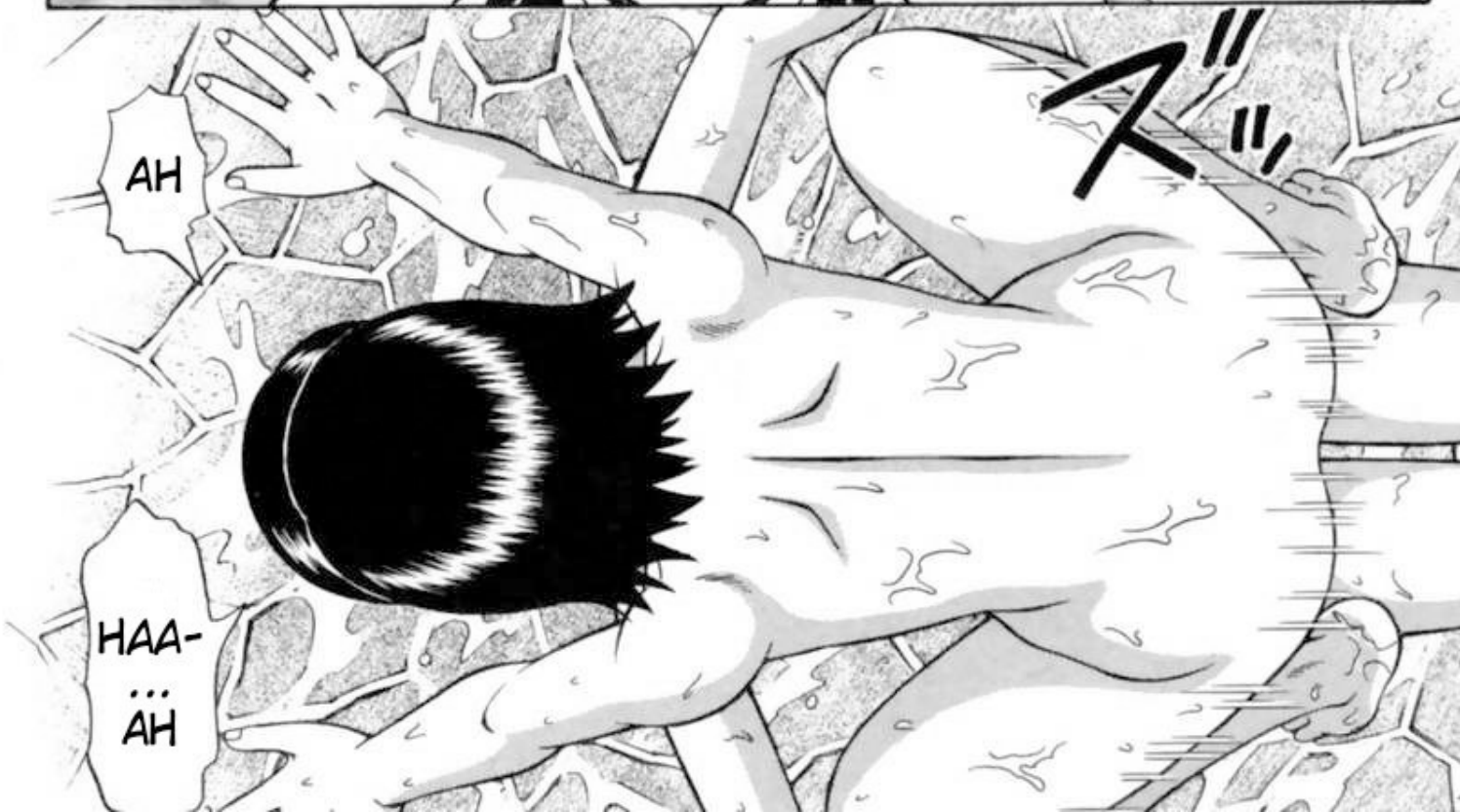
HAH

HAH

HAH

YEP
...

THAT PLACE
WHERE YOU
TOUCHED
ME JUST
NOW...



AH

HAA-
...
AH

ア"ン









TH-
THANKS

HAPPY
NEW YEAR,
TSUBASA-
CHAN



SEEMS
LIKE IT HAS
STOPPED
RINGING

THE
TEMPLE
BELL...



"I THINK
I WILL BE
ABLE TO
SEE YOU
A LOT
TOO FROM
NOW ON."

"DEAR TSUBASA-
CHAN, I HAVE
DECIDED TO
ATTEND SCHOOL
IN TOKYO
STARTING THIS
SPRING. I WILL
BE LIVING BY
MYSELF."



ONE MONTH
LATER, I
RECEIVED
A LETTER
FROM
HITOMI-
ONEECHAN



"WHEN IT IS
SPRING TIME,
LET'S GET
A LOT MORE
INTIMATE, OK?"

END