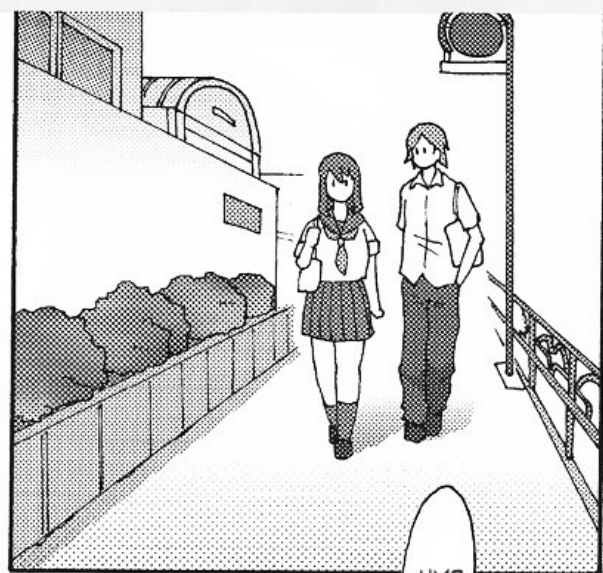




OH, I SEE. THAT MAKES SENSE.

SHE WAS A YEAR BEHIND ME IN MIDDLE SCHOOL... BACK THEN SHE WAS RATHER, UM, BIG BACK THEN. SHE MUST HAVE LOST A LOT OF WEIGHT, I DIDN'T EVEN RECOGNIZE HER AT FIRST.

I GUESS SO...



HM?



AYA-CHAN'S FULL NAME?

COULD THAT BE TAKASHIMA AYAKO?



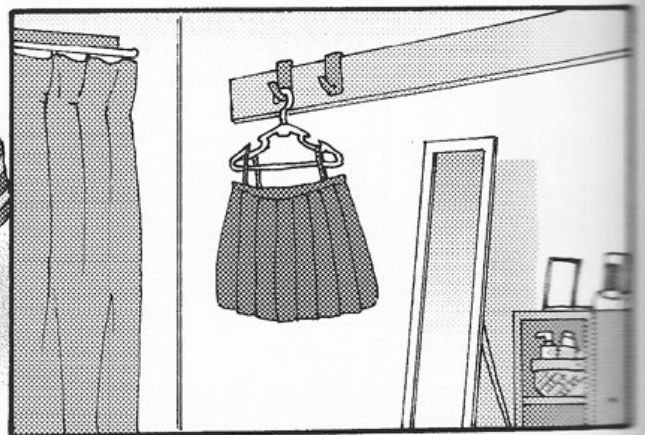
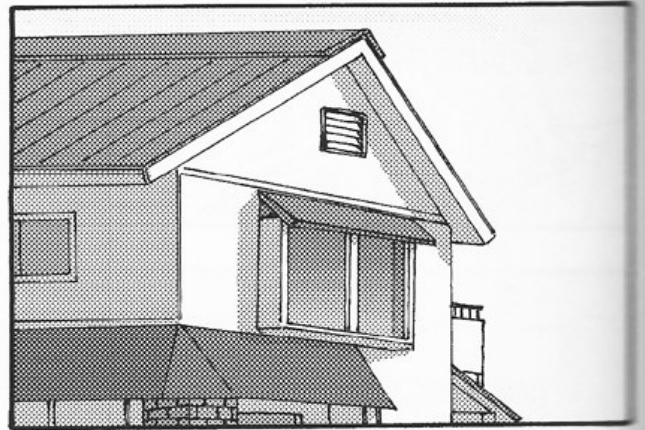
RIGHT, I'M SURE THAT'S THE ONLY REASON.

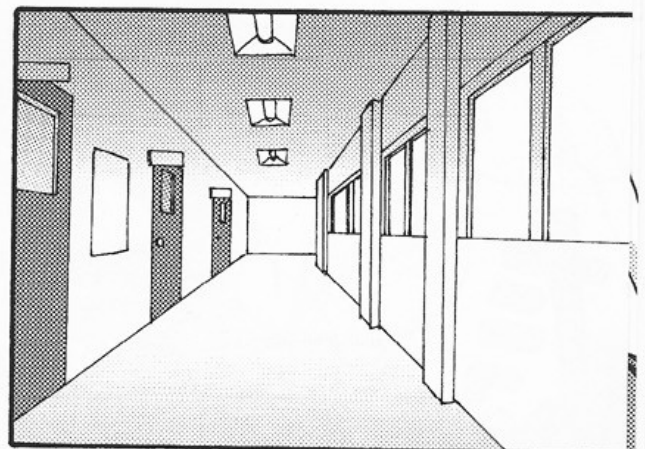
IT'S NOT LIKE THAT... THAT YOUNGER STUDENT HAS JUST BEEN BRINGING ME THESE DELICIOUS FOODS EVERY DAY. WHAT AM I SUPPOSED TO DO, REFUSE? I'M HER SENIOR!



ON THE OTHER HAND, IT LOOKS LIKE SOMEONE HAS BEEN FILLING UP ON MEAT AND PASTRIES RECENTLY.

GOOOO!









アハハ

...SO...

YOU WILL EAT, AND EAT, AND EAT, AND EAT SOME MORE UNTIL YOUR BELLY IS AT ITS ABSOLUTE LIMIT...

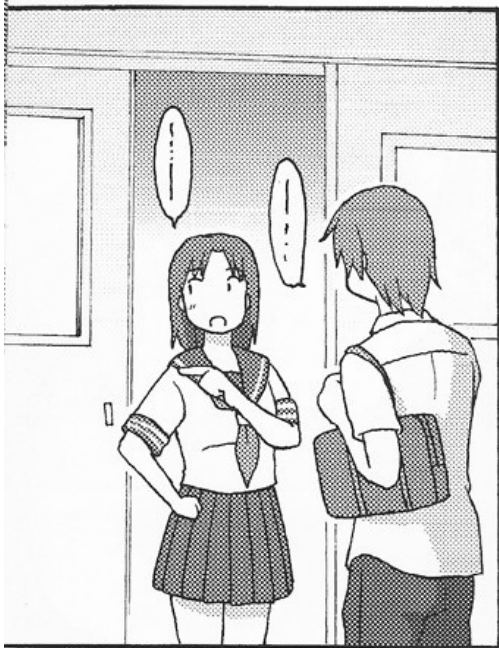


DON'T YOU KNOW?



W-WHAT ARE YOU TALKING ABOUT?

MAMIYA-SENPAI DOESN'T LIKE FAT GIRLS...



かほ

クダ

HERE YOU GO, EAT UP!

WHAT ARE YOU-

MPH!!



IT WOULD BE CRUEL IF I DIDN'T LET YOU HAVE ANY, YOUR MOUTH LOOKS SO INVITING...

NO... DON'T...

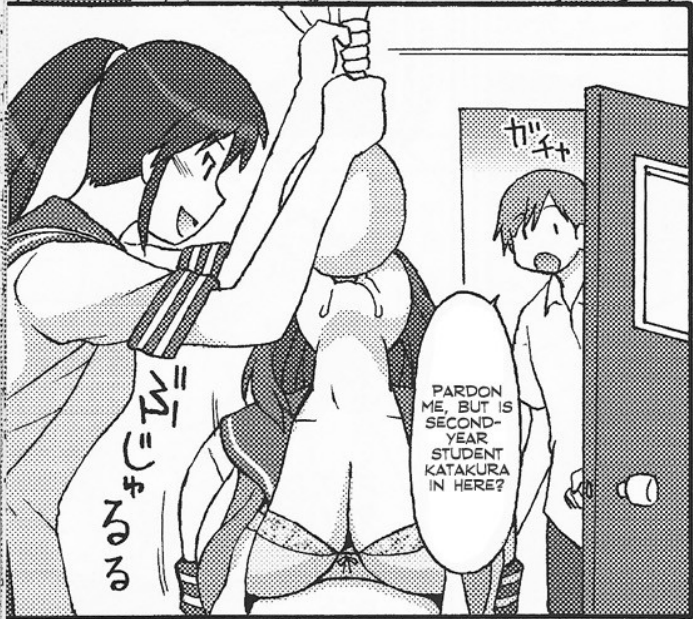


THIS SHOULD MAKE YOU MORE COMFY.

YOUR BELLY IS ABOUT THE SIZE MINE WAS AT ONE TIME.



THIS IS THE RICHEST, MOST DENSE PASTRY ICING WE HAVE IN STOCK, IT'S DELICIOUS. I KNOW YOU WANT SOME OF THIS SWEET CREAMY GOODNESS...



PARDON ME, BUT IS SECOND-YEAR STUDENT KATAKURA IN HERE?



HMM, NOT QUITE YET, WE HAVE TO KEEP GOING UNTIL YOU'RE AT YOUR LIMIT, KATAKURA-SENPAI...



TA... TAKA-SHIMA?

HEY,
SENPAI...

DOESN'T
KATAKURA-
SENPAI LOOK
LIKE SOMEONE
YOU USED
TO DATE?

AHH,
MAMIYA-
SENPAI.

CAN'T YOU
SEE THAT I'M
CURRENTLY
SERVING
KATAKURA-
SENPAI?

WHAT
THE
HELL
ARE
YOU
DOING?

TOOO

SOMEONE
WHO WAS
BIG AND
FAT AND
HAD A
HUGE
APPETITE...

GUHH
AHAHH

NOPE.

ON THE
CONTRARY,
I ONLY
LIKE
CHUBBY
GIRLS.

SO WHY
DON'T
YOU JUST
DUMP
THIS FAT
PIG AND
GO OUT
WITH ME
AGAIN?

WHAT!?

NOW TAKE
A GANDER
AT WHO
HAS GONE
ON A DIET
AND
GAINED A
SENSE OF
STYLE...



I HATE YOU SO MUCH!!!



BUT YOU SAID YOU BROKE UP WITH ME BECAUSE I WAS TOO HEAVY!

WELL, YOU WERE AROUND ME 24/7... YOU FELT MORE LIKE A STALKER THAN A GIRLFRIEND, ALWAYS HANGING AROUND MY NECK... IT'S A DIFFERENT KIND OF "HEAVY", YOU SEE.



Y-YOU LIE...

GENERALLY SPEAKING, I STARTED TO GO OUT WITH YOU **BECAUSE** YOU WERE CHUBBY, I NEVER WANTED YOU TO GET THIN.

I WAS THANKFUL WHEN I FOUND KATAKURA, BECAUSE SHE WAS A LITTLE CHUBBY AS WELL.



SO NOW THAT THE DRAMA IS OVER...



NO, IT'S FINE, THANK YOU.



...



PERSONALLY, I THINK TAKASHIMA'S BIGGEST MISTAKE WAS USING THE ICING INCORRECTLY.

HUH...



SORRY FOR BEING A BIT LATE.



YEAH...

WELL, THAT'S ONE HELL OF A WAY TO "COME OUT OF THE CLOSET."



NO...
I DIDN'T
MEAN
IT LIKE
THAT...

AHH, SORRY,
BUT DIDN'T
YOU SAY
SOMETHING
ABOUT
YOUR
CLOTHES
BEING MORE
UNCOM-
FORTABLE
LATELY?



WAIT...
STOP...

WHAT
ARE YOU
DOING
NOW?

「
ピ
ン
チ
」
「
チ
ャ
ッ
」



MM...
THIS
CREAM
REALLY
IS
SUPER
SWEET!

ち
ゃ
っ



「
ニ
ー
チ
」

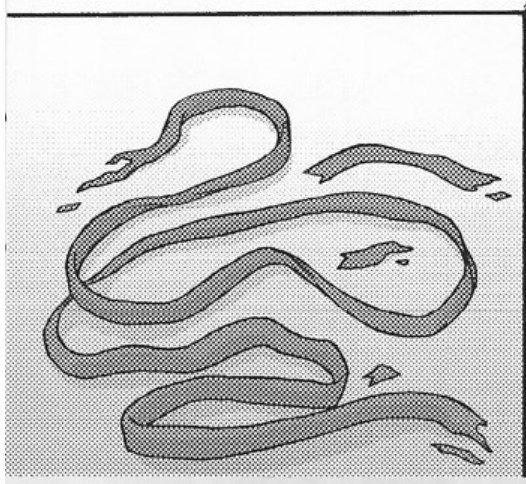
「
る
ら
」

「
チ
ャ
ッ
」



「
ロ
ッ
」

STOP...
YOU'RE
TAKING
ADVANT-
AGE
OF THE
SITUATION...







AAHH

HAAH!!

!!

ちゅっ

びゅらーッ

ぬぼん

ジュルジュル

HAAH

I GUESS IT'S FINE SO LONG AS NO ONE CAME IN... BUT I THINK WE ATE ALL THE ICING...

DO YOU THINK ANYONE HEARD US OUTSIDE THE DOOR?

OH, GOD, YEAH, I'M GETTING THERE!



ハハハハハ

ハハハハハ

ハハハハハ

ハハハハハ

ハハハハハ

ハハハハハ

ハハハハハ

AHH, YOU'RE SO DEEP INSIDE ME!!

ハハハハハ

ハハハハハ



MY BELLY IS SO FULL...

HAHAH

AHAAH, THAT WAS ONLY OUR THIRD TIME...
BUT IT WAS BY FAR THE MOST AMAZING, THE CREAM IS SPILLING OUT OF ME.



HAHAH
HAHAH

ホム

ビシッ
ビシッ
ビシッ



HEY, DID YOU HEAR?



SHE PROBABLY JUST FELL ILL.

I WOULDN'T WORRY ABOUT HER, YOU'RE MUCH CUTER THAN SHE EVER WAS.



I'M PRETTY SURE I HAVEN'T SEEN HER AT ALL.

IT'S BEEN A WHILE SINCE AYA-CHAN HAS GONE TO SCHOOL.



HEY, THIS IS HAYABUSA.
EVERYTHING IS THE SAME
IN FAT GIRL MANGA LAND,
AND THANKS TO YOUR
SUPPORT, I HAVE BEEN
VERY BUSY. THANK YOU!