



Who are you calling a monster?

hmph

MO-MONSTER!!



How impolite

You're the one who got lost in another person's bedroom

THIS CAVE IS FAR FROM ANY HUMAN SETTLEMENTS

ARE YOU GOING TO EAT ME!?

ARE--

Usually lured wild boars and the like are enough [to sate me] but... I suppose

...
hmm

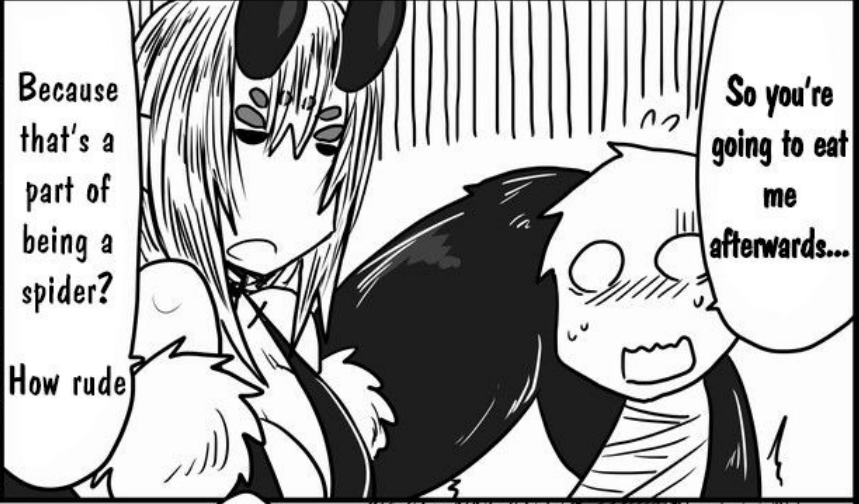
I shouldn't have asked!

...isn't too bad either

Eating people every now and then...



Nnh



Because that's a part of being a spider?

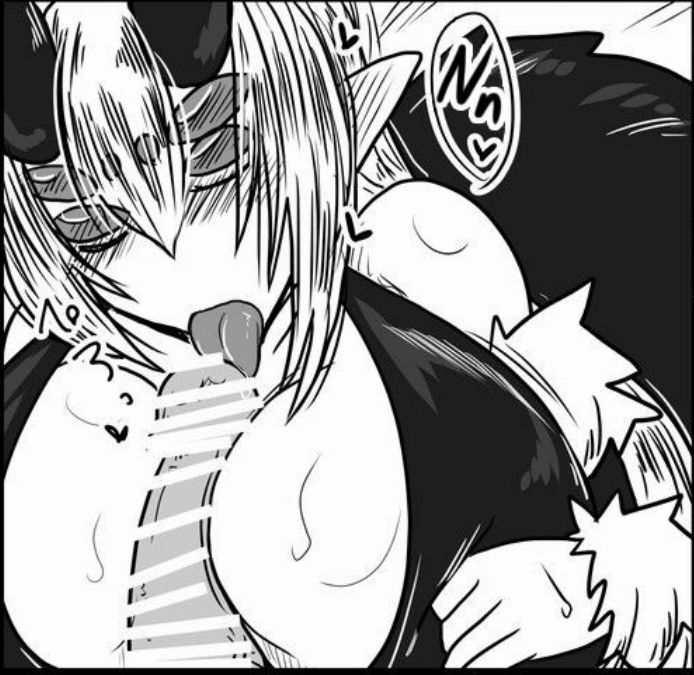
How rude

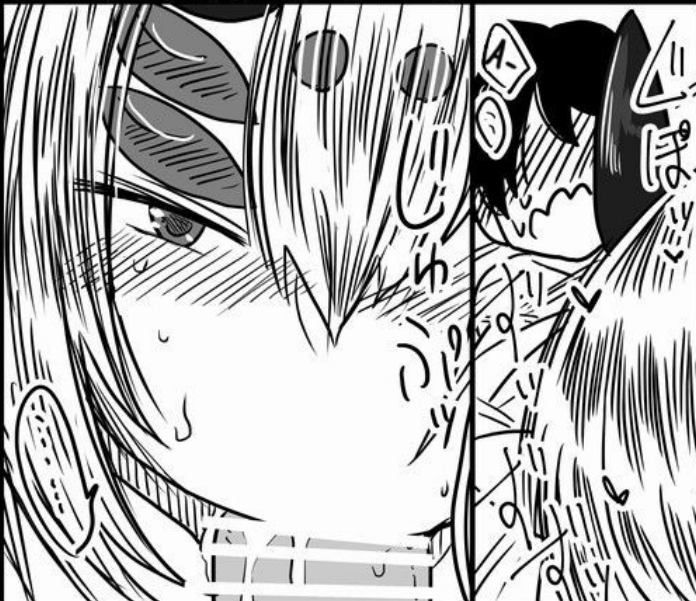
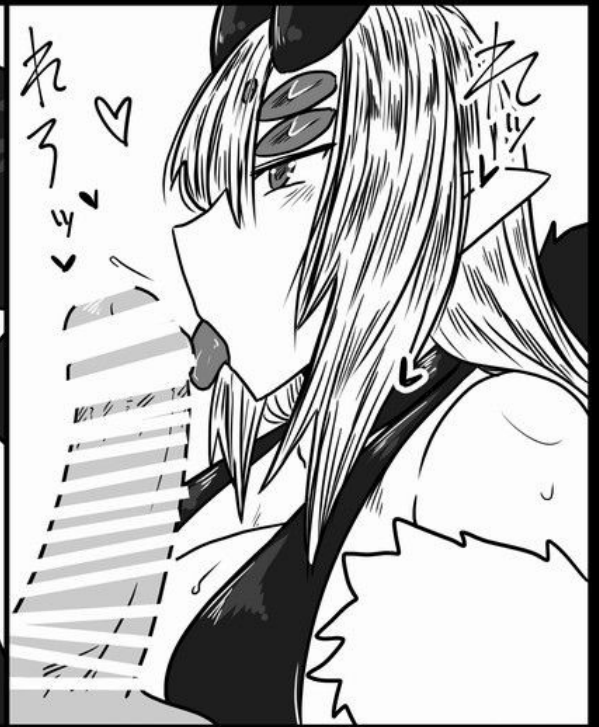
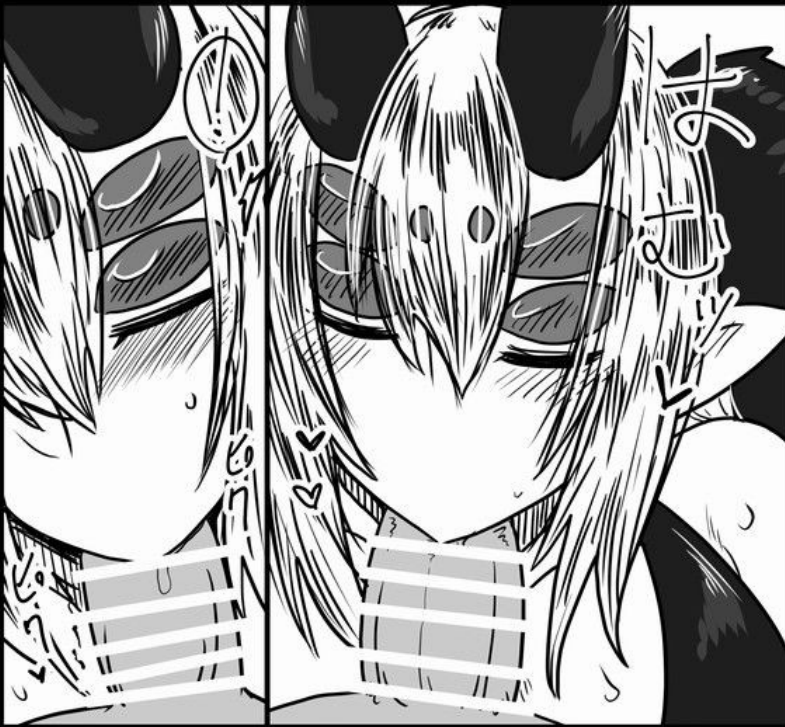
So you're going to eat me afterwards...

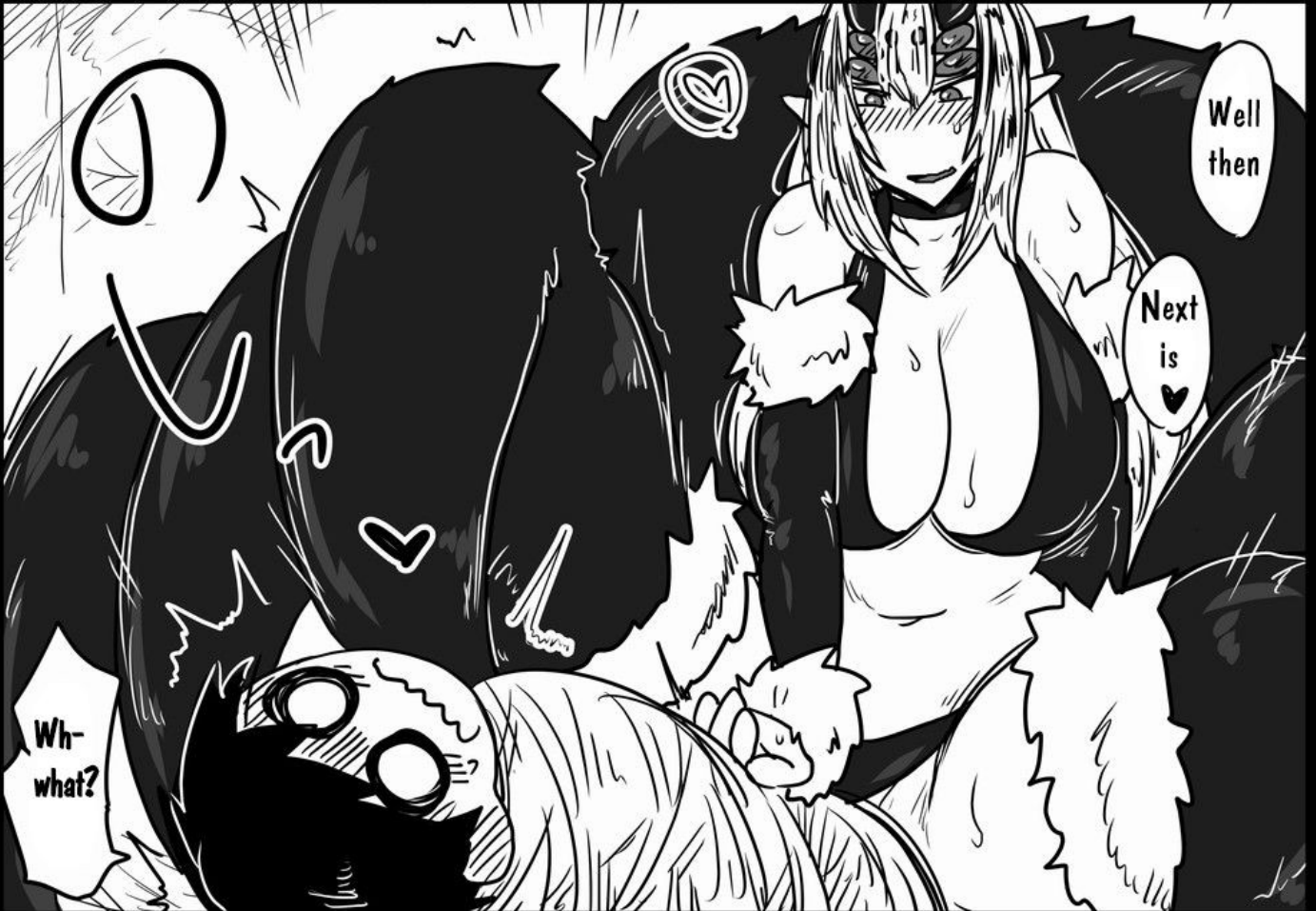
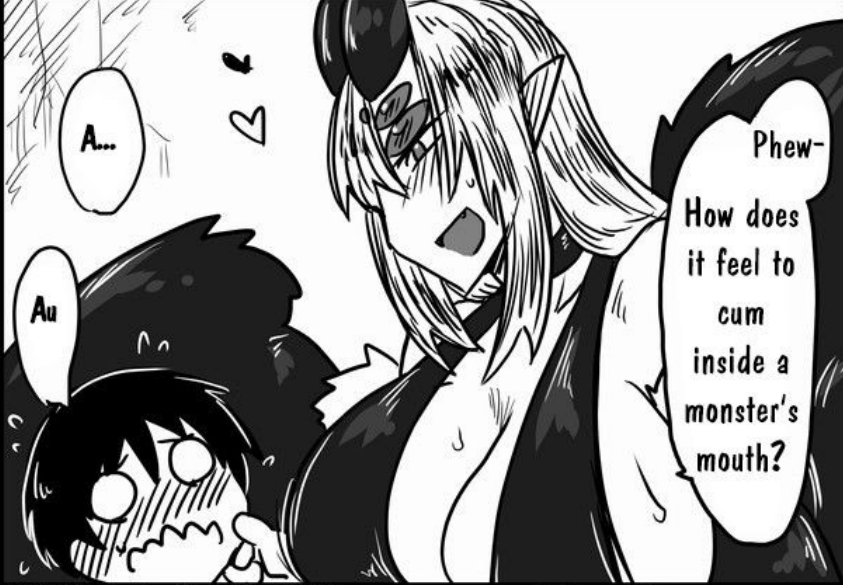


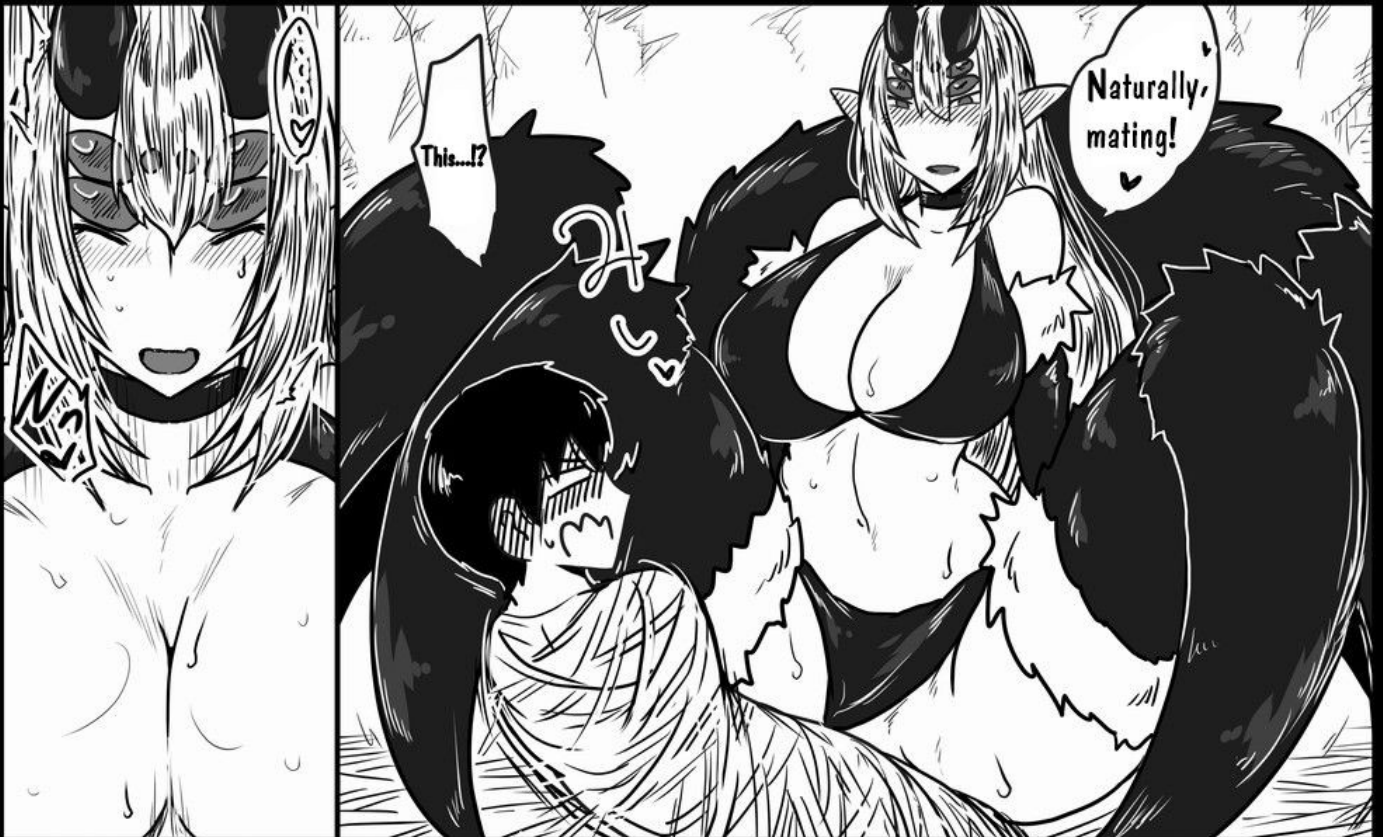
My, this part sure is honest

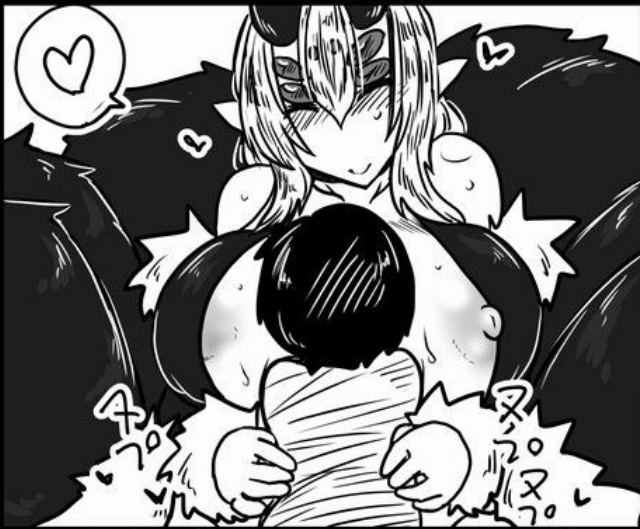
Be obedient











Feels good...

A-
This is mating



Y-
yes



You've become so obedient

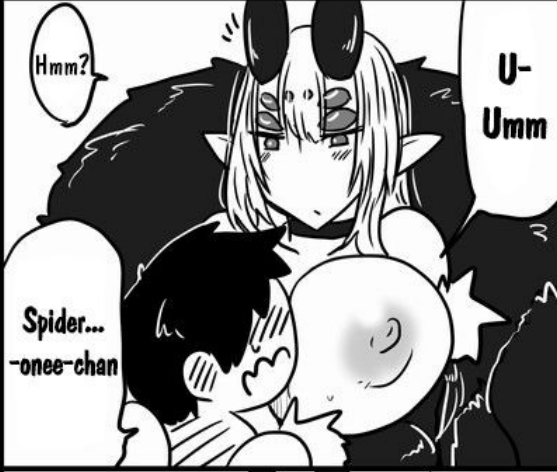


How is it?
Are you feeling good?









Hmm?

U-
Umm

Spider...
-onee-chan



Isn't it about
time you
release me?

I've been
like this for
a few days



AFTER
THAT HE
LIVED ON
LIKE THIS
[IN WEBS]
AND MADE
LOTS OF
CHILDREN

Why
would I
release
you?

