



YOUR BAG IS A BIT HEAVY, AIN'T IT?
YOU MUST BE REALLY STRONG AFTER CARRYING THIS EVERYDAY~



STOP...

PLEASE, RETURN IT

IT DOESN'T CONCERN YOU ITSUKI-SAN~

世界の昆虫大図鑑



OH-

S-STOP !!





DON'T MIND
DON'T MIND!

ITSUKI-SAN?

OOPS,
I DROPPED
YOUR INSECT
BOOK!

UN
-INTENTIONALLY
...

あわわわ



Y-YES?



CLASS
STARTS IN 5-!

DON'T
TELL
ANYONE
!

I WILL HAND
YOU OUT MY
SELF-STUDY
PRINTS

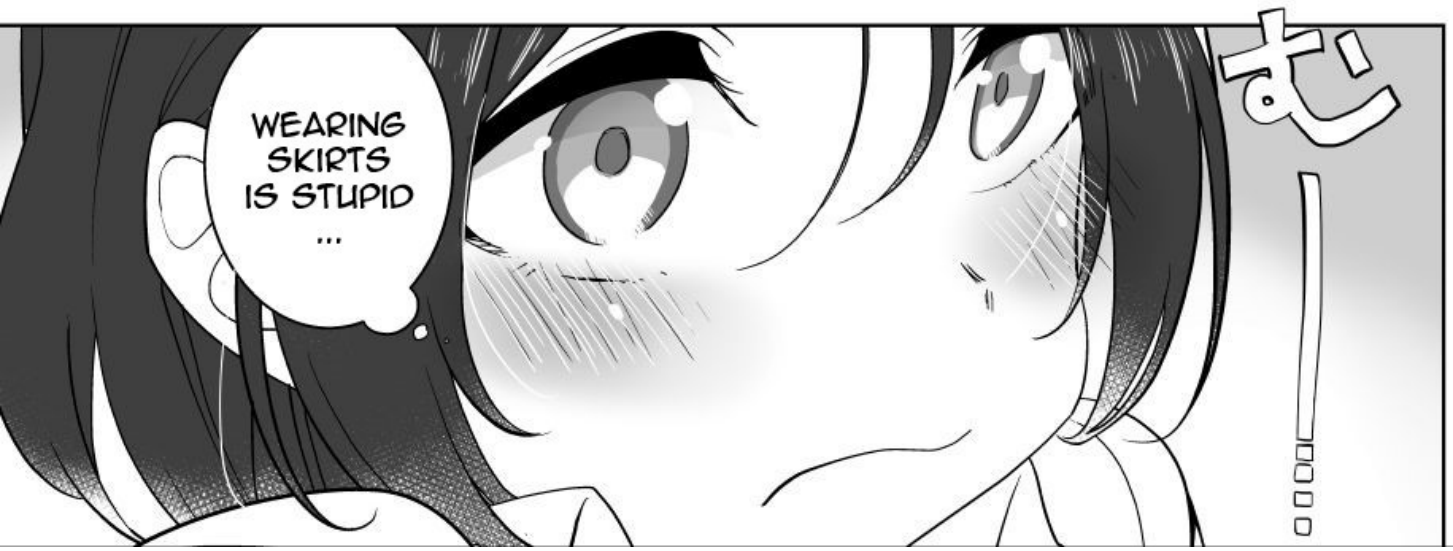
HMM

EVEN THOUGH
WE'RE NEARING
THE HOLIDAY,
I STILL ADVISE
YOU TO STUDY
MORE!

カリ
カリ

ッ
?

カリ
カリ
...



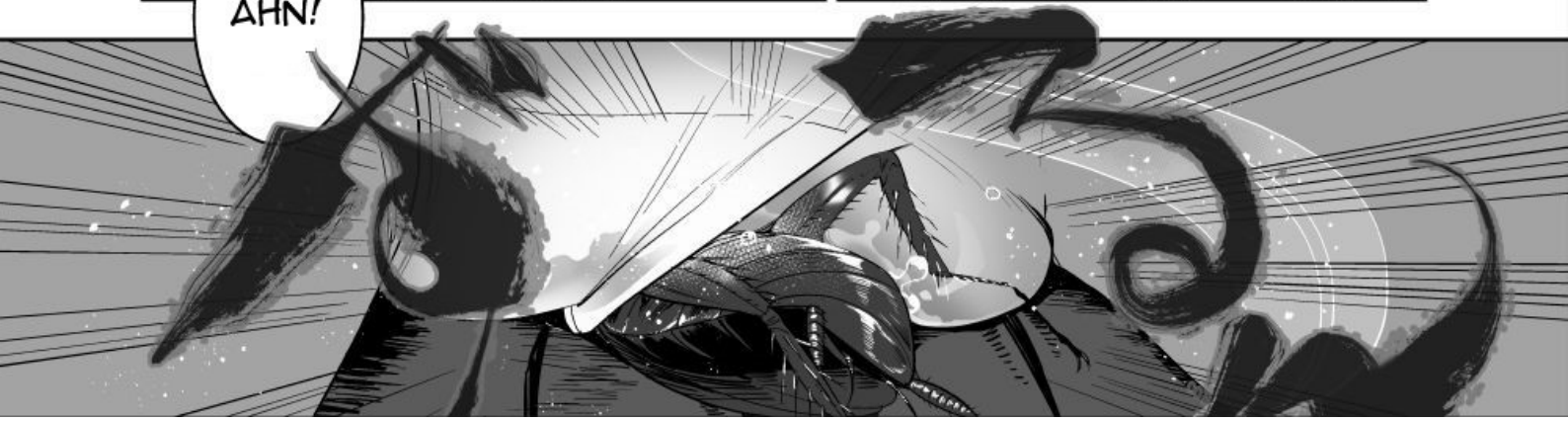
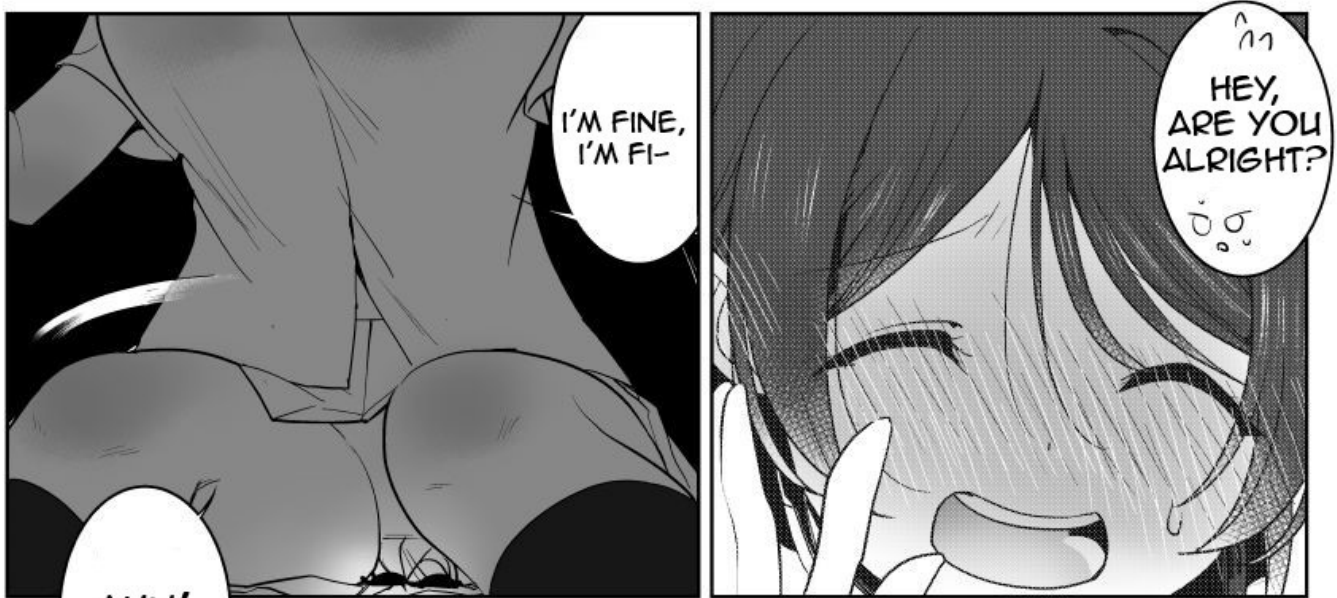


DISCO
-VERY~!



?







HELLO, THIS IS MY FOURTH MTL
TRANSLATION! I TRY TO CORRECT SOME OF
THE PHRASES TO MAKE MORE SENSE BUT
SOMETIMES IT GETS REALLY HARD SO I JUST
INTERPRET WHAT'S HAPPENING FROM THE
DRAWINGS!

SUPPORT THE ORIGINAL ILLUSTRATOR ON
PIXIV/FANTIA!
PIXIV.NET/EN/USERS/31066928
FANTIA.JP/FANCLUBS/6943

FEEL FREE TO FOLLOW, FOR MORE UPDATES!
TWITTER.COM/LVERTERRE