



YOUR BAG IS A BIT HEAVY, AIN'T IT?  
YOU MUST BE REALLY STRONG AFTER CARRYING THIS EVERYDAY~



STOP...  
PLEASE, RETURN IT  
IT DOESN'T CONCERN YOU ITSUKI-SAN~



OH-  
ひま!!  
S-S-STOP!!





EVEN THOUGH  
WE'RE NEARING  
THE HOLIDAY,  
I STILL ADVISE  
YOU TO STUDY  
MORE!

カリ  
カリ

ッ  
?

カリ  
カリ  
...



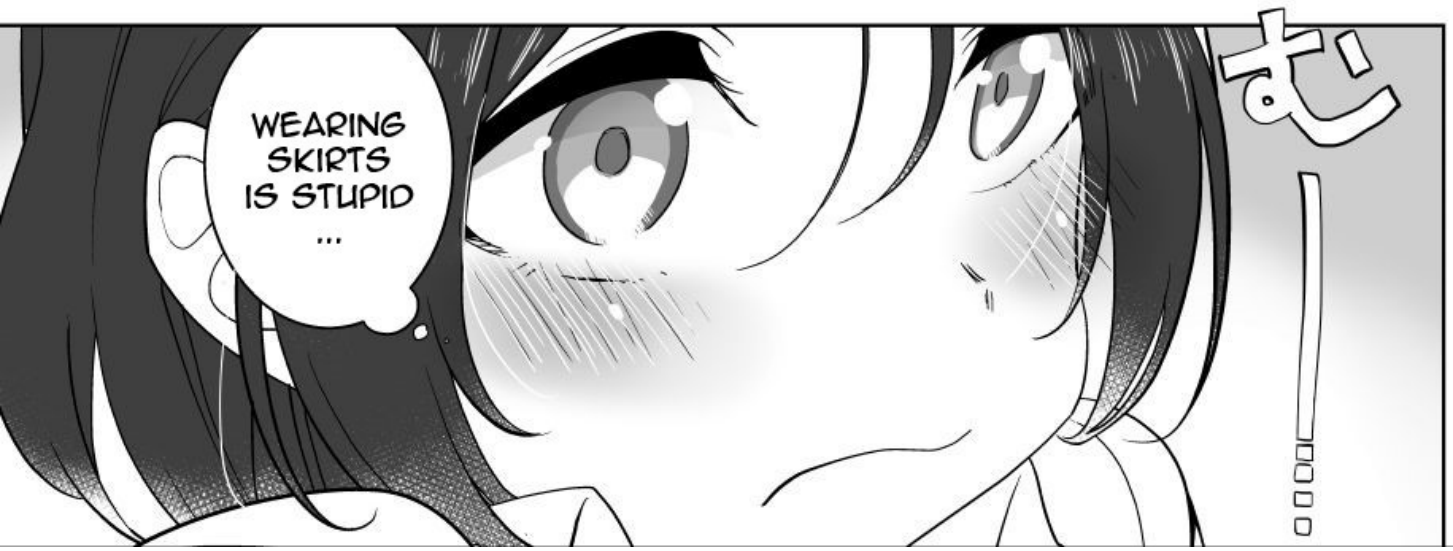
\*SLICK ♡

AH

HM

THEY'RE ALL

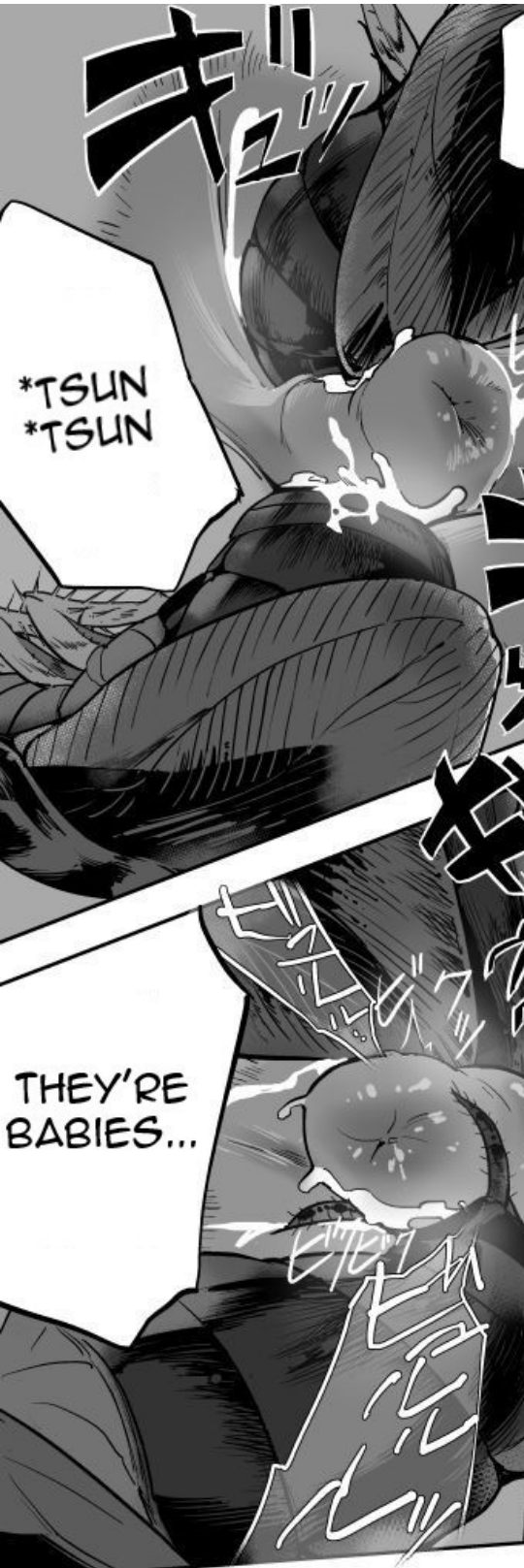
OVER ME



WEARING SKIRTS IS STUPID ...

む

□□□□□



キッ  
ツ

\*TSUN  
\*TSUN

THEY'RE  
BABIES...



HA  
:

HM

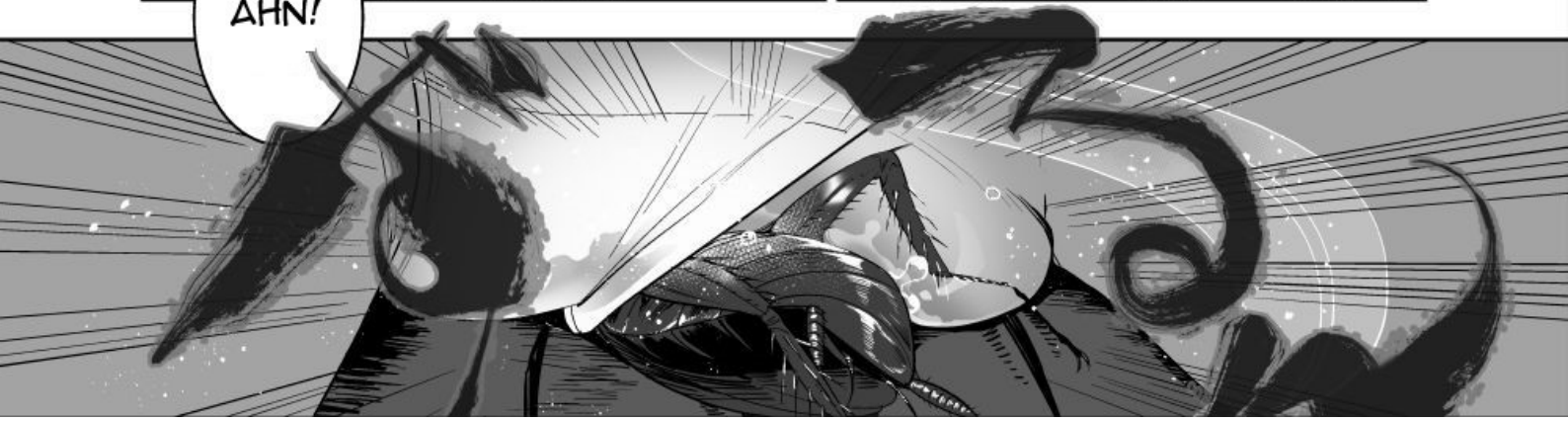
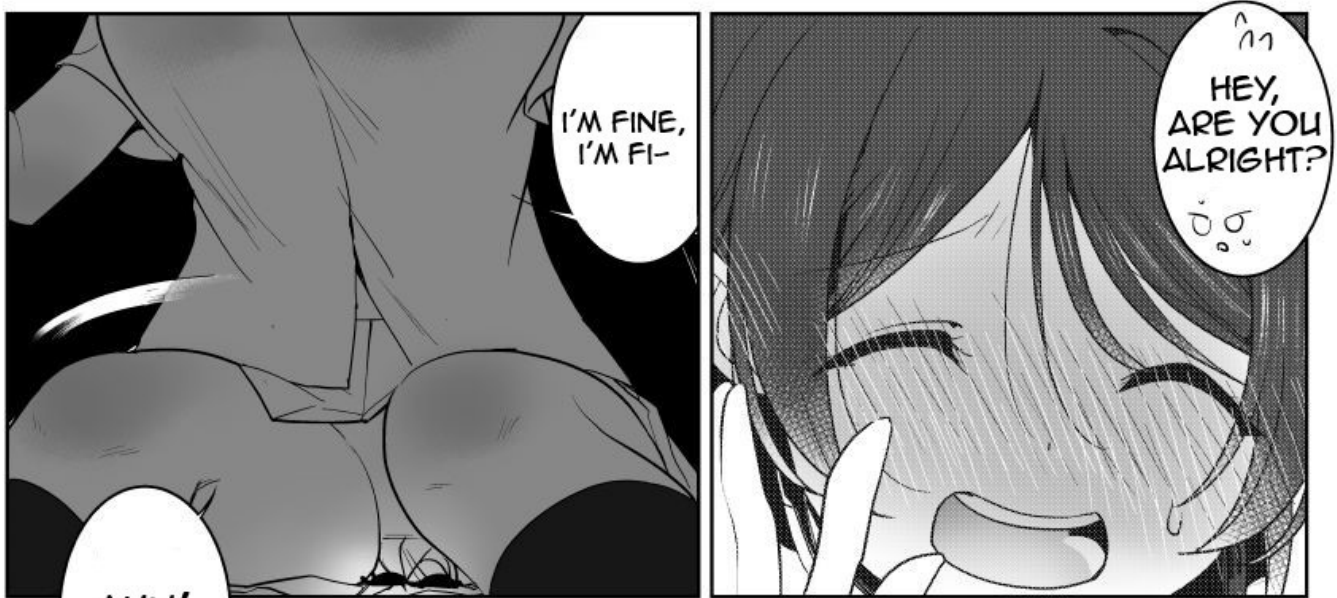
MMN  
!



I CAN'T HELP  
BUT THINK  
THAT  
YOU WERE  
MADE FOR  
THIS~

THIS IS  
THE  
ROOM  
WHERE  
I KEEP  
MOST  
OF THEM

HOW  
DOES  
IT  
FEEL?





HELLO, THIS IS MY FOURTH MTL  
TRANSLATION! I TRY TO CORRECT SOME OF  
THE PHRASES TO MAKE MORE SENSE BUT  
SOMETIMES IT GETS REALLY HARD SO I JUST  
INTERPRET WHAT'S HAPPENING FROM THE  
DRAWINGS!

SUPPORT THE ORIGINAL ILLUSTRATOR ON  
PIXIV/FANTIA!  
PIXIV.NET/EN/USERS/31066928  
FANTIA.JP/FANCLUBS/6943

FEEL FREE TO FOLLOW, FOR MORE UPDATES!  
TWITTER.COM/LVERTERRE