

HERO'S
MELANCHOLY

-
INITIAL
TRAINING,
PART II

ワラビモチー



SHIT



SLURP♡

N

HU

HU

WIGGLE

TWITCH

WIGGLE

SLURP♡

HAS BEEN SUCKING MY PENIS!

N

STARE♡

SUCK

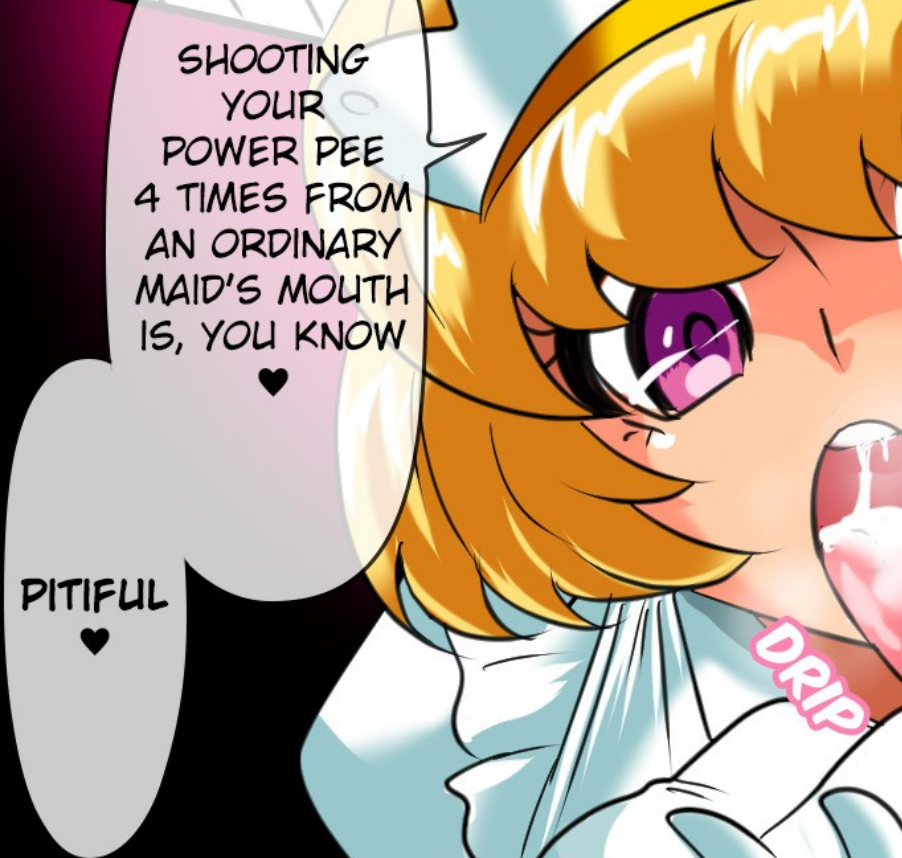
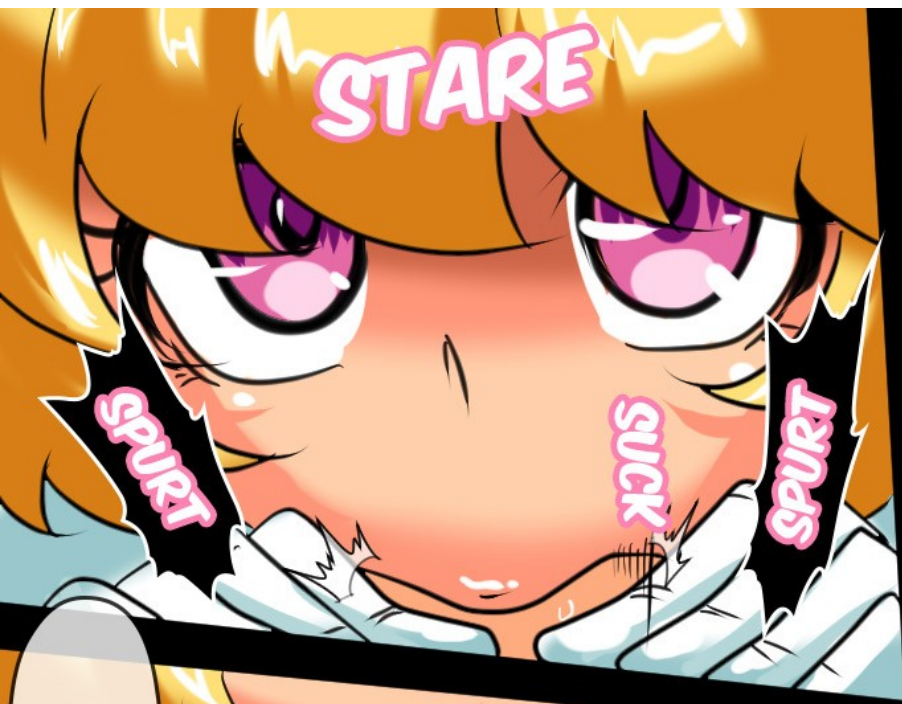
LICK♡

SUWWWWUCK

SUCK

EVER SINCE SHE CAME HERE, SHE..!

MHN



MN... YUMMY ♡

SHOOTING YOUR POWER PEE 4 TIMES FROM AN ORDINARY MAID'S MOUTH IS, YOU KNOW ♡

PITIFUL ♡

OKAY, THIS IS THE 4TH ONE ♡
TAKERU-KUN IS A HERO ALL RIGHT, WITH A WEAK COCK ♡

DON'T SUCK WHEN I'M CUMMING ♡

STARE

SPURT

SUCK

SPURT

SUCK

SPURT

SPURT

TWITCH

NHU

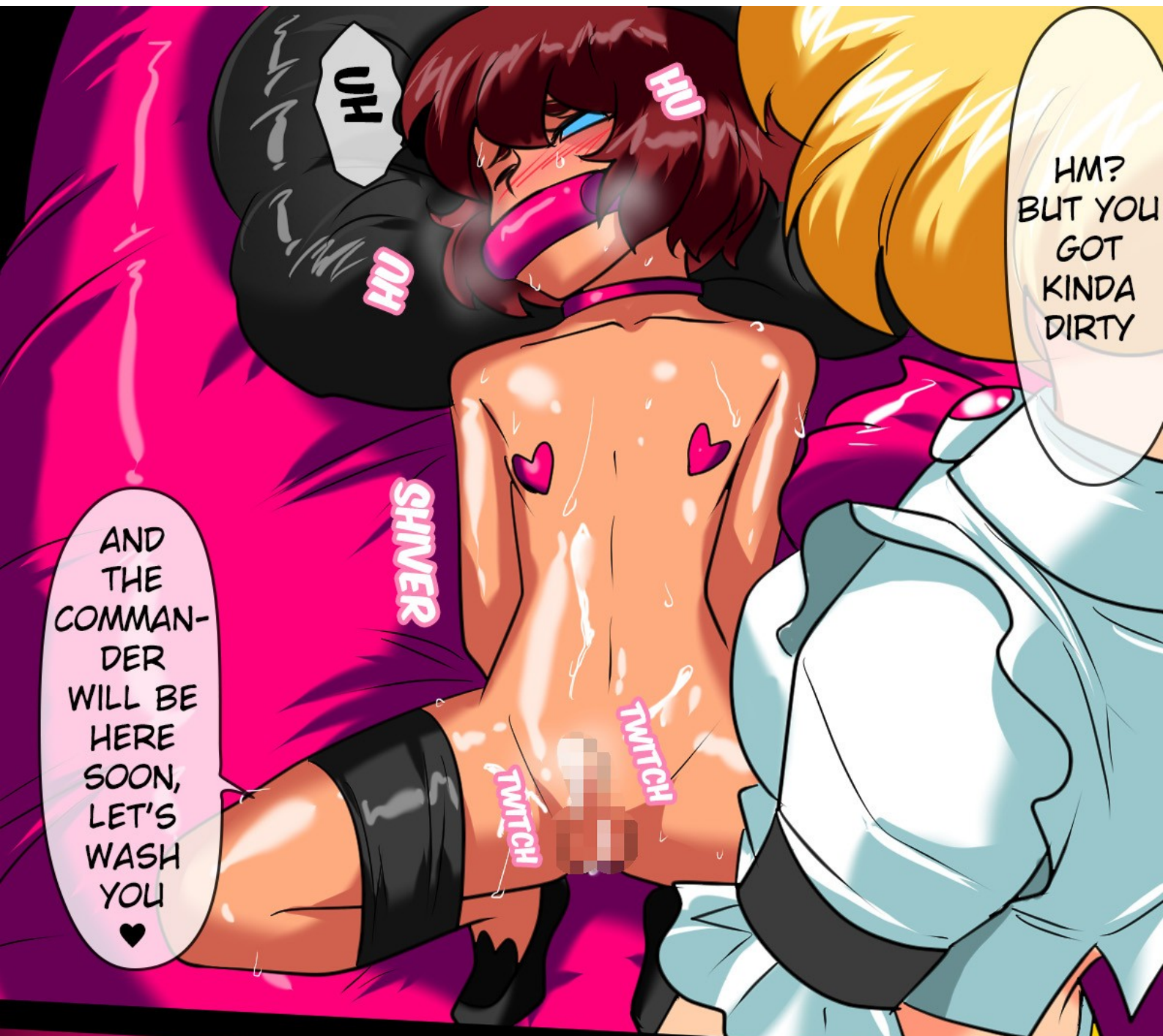
DRIP

HUU

TWITCH

DRIP

AAHN



OH

OH

OH

HM?
BUT YOU
GOT
KINDA
DIRTY

AND
THE
COMMAN-
DER
WILL BE
HERE
SOON,
LET'S
WASH
YOU
♥

SHIVER

TWITCH

TWITCH



ONEE-
CHAN'LL
SCRUB
TAKERLI-
KUN'S
BODY LOTS
AND LOTS
♥

I'VE
PREPARED
A SPECIAL
BATH FOR
TAKERLI-
KUN
♥

OH

SHIVER



YOU CAN'T UNDERSTAND WHAT IT IS... BUT IT WILL REVITALIZE YOU!

THIS IS A SPECIAL BATH FOR TAKERU-KUN

TA-DAH ♡

NOW, GET IN

BATH



!?

TWITCH

DIP

SHE ... IS...

GRR!

SLIDE

MIND TELLING ONE-CHAN MORE?

SLIDE

AAGH

YOU..!

C'MON THIS BATH FEELS GOOD, RIGHT?

RUB♥

N

RUB♥

RUB♥

SO? WHAT'S WEIRD HERE?

RUB♥

DIP

WHAT'S WITH THIS WATER! WHAT THE..!

TWITCH

A

NO!

DRIP

SPREAD

AND YOUR WHOLE BODY WILL FEEL GOOD

NOW GET DEEPER IN THE WATER



THAT'S WHAT YOU SAY~

AND NOW I WON'T ALLOW THIS!

I KNOW! YOU CALL IT A BATH, BUT THIS WATER WILL DRAIN MY ENERGY INSTEAD!

A

LOOK, ONEE-CHAN IS PATTING YOUR TIP
♥
GOOD BOY
♥

SLIDE♥

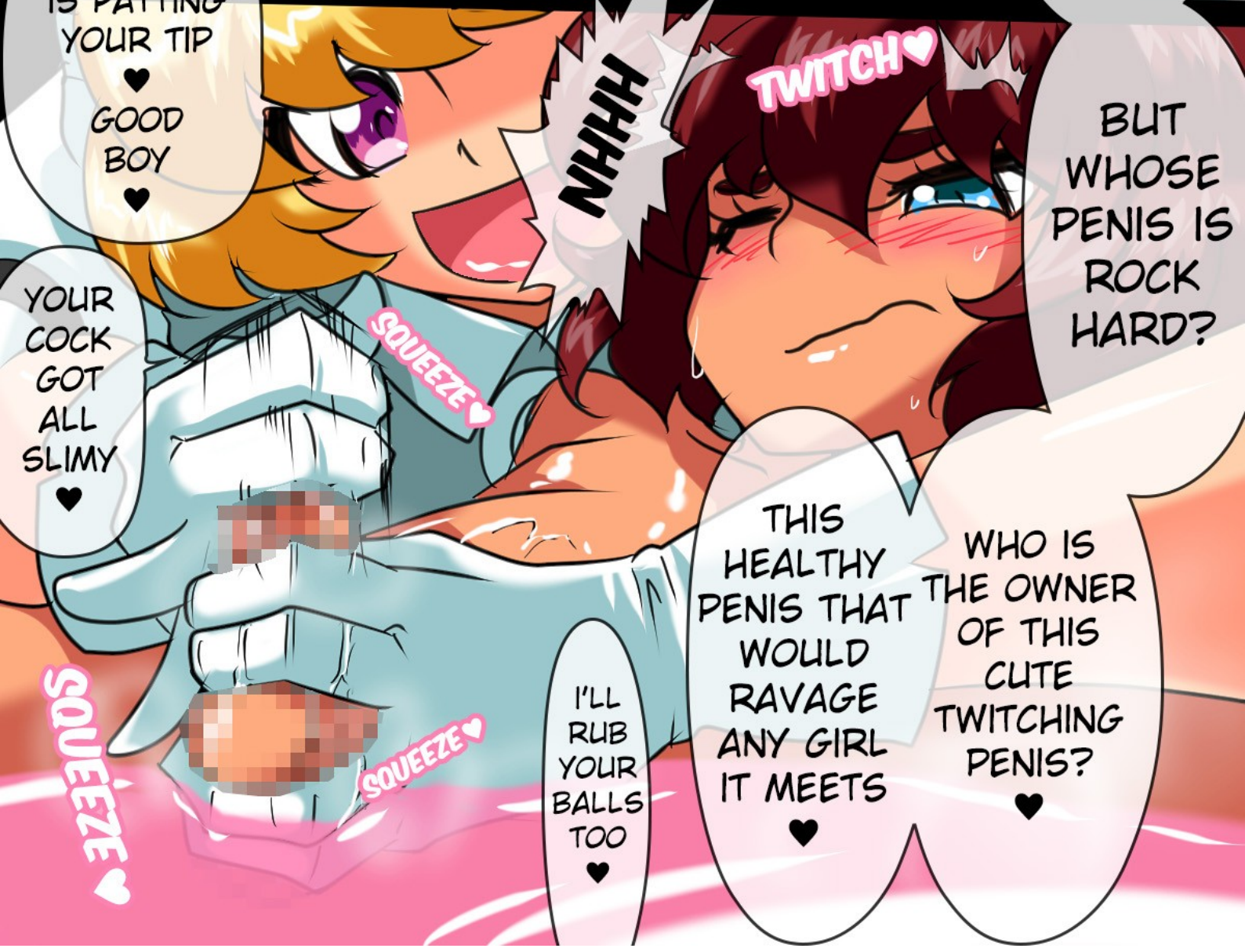
RUB♥

RUB♥

RUB♥

RUB♥

YOUR COCK GOT ALL SLIMY
♥



YOUR COCK GOT ALL SLIMY
♥

BUT WHOSE PENIS IS ROCK HARD?

NHHH

THIS HEALTHY PENIS THAT WOULD RAVAGE ANY GIRL IT MEETS
♥

WHO IS THE OWNER OF THIS CUTE TWITCHING PENIS?
♥

I'LL RUB YOUR BALLS TOO
♥

SQUEEZE♥

TWITCH♥

SQUEEZE♥

SQUEEZE♥



N

TWITCH

FAP

FAP

SQUEEZE

FAP
FAP
FAP



HA

A

SQUEEZE

RUB

FAP

RUB

RUB
RUB
RUB

TRUMP
TRUMP

FAP



UHH

NGH

YOU CAN'T
RUN

RUB

RUB

SCRUB
THE
TIP

TWITCH



NO

SLOSH
SLOSH

NHA

HM?
THIS
FEELS
THE BEST?
FROM ALL
THE PARTS
OF YOUR
COCK THIS
FEELS
THE BEST?

NOW
ONEE-CHAN
WILL
STROKE
TAKERU-KUN'S
SHAFT LOTS
AND LOTS

TAKERU-KUN
IS QUITE A
PERVERT
TO ENJOY
HIS TIP
TEASED

FAP
FAP

A

RUB
RUB

NO

YOU
LIKE WHEN
YOUR
UNCUT TIP
IS BEING
TEASED?

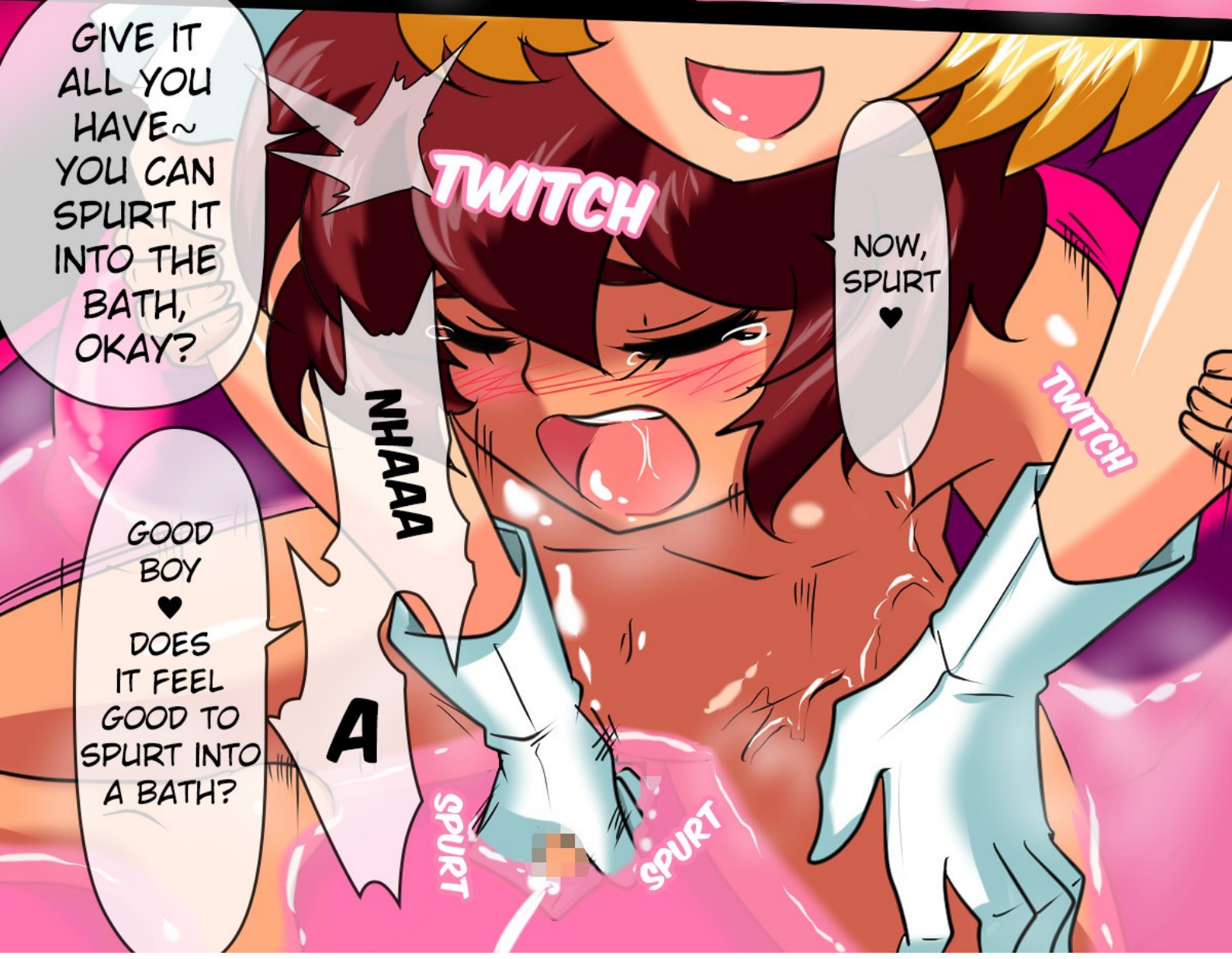


YOU'LL SHOOT YOUR LEWD PEE FROM HAVING YOUR WHOLE COCK STROKED

DO YOU UNDERSTAND NOW? YOU WILL SPURT INSIDE ONEE-CHAN'S HAND PUSSY

NH
TREMBLE
TREMBLE
NH

FAP
FAP
FAP
FAP
FAP
FAP
FAP
FAP
FAP
FAP



GIVE IT ALL YOU HAVE~ YOU CAN SPURT IT INTO THE BATH, OKAY?

NOW, SPURT ♡

GOOD BOY ♡ DOES IT FEEL GOOD TO SPURT INTO A BATH?

NHAAA

A

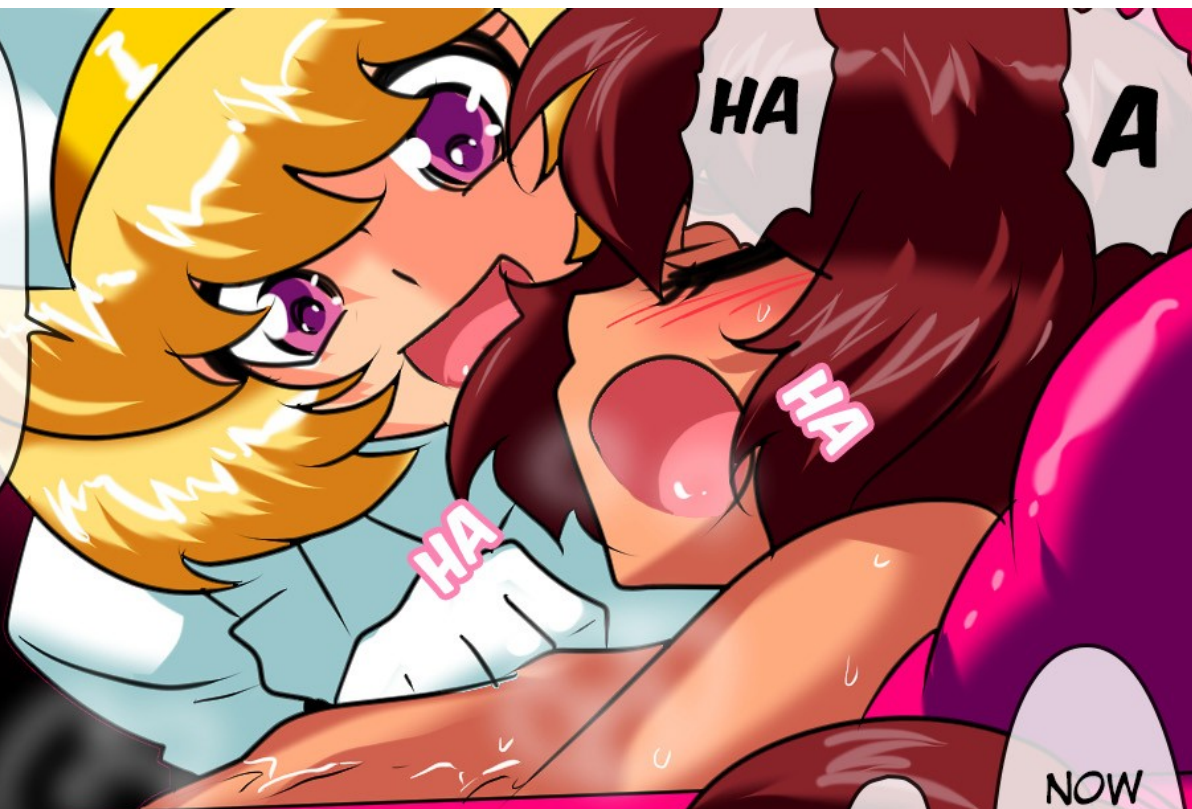
SPURT
SPURT

TWITCH

TWITCH

IT FELT GOOD TO SPURT INTO A SLIMY BATH, RIGHT?

LOTS CAME OUT



HA

A

HA

HA

NOW IT'S TIME TO RUB TAKERUKUN'S BODY



SEEMS I'LL MOSTLY RESTORE YOUR LEWD ENERGY



SLIDE

A

WHAT SHOULD I DO! SQUEEZE MORE AND THEN WASH YOU AGAIN?

SLOSH RUB

YOU'RE NOT SUPPOSED TO GET DIRTY IN THE BATH YOU KNOW

HERE, SLIMY-SLIMY



SLOSH

RUB

RUB

SLIDE





RUB RUB RUB

RUB RUB RUB RUB

HA

LET'S DO OUR BEST



RUB RUB

RUB RUB

RUB RUB

GRR

YOU CAN'T

BUT IT'S FINE♥
TAKERU-KUN IS SHOOTING HIS ENERGY AFTER ALL

LET'S RUB YOUR NIPS



HHH

MHN

TWITCH

LICK

LICK

TWITCH

I WANT TO EAT YOU

YOU LIKE IT? WHEN ONEE-CHAN'S TONGUE IS GOING WILD INSIDE YOUR MOUTH?

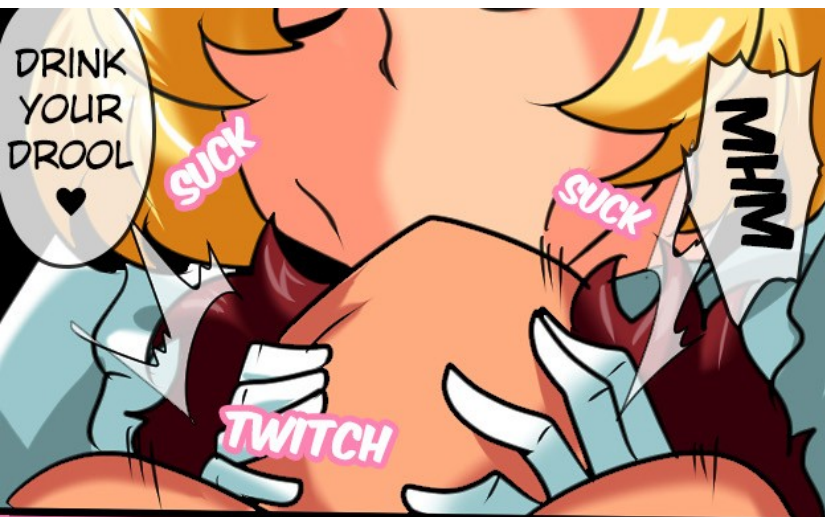
SMOOCH♥



SMOOCH♥

N...♥
GET YOUR CUTE FACE HERE

TWITCH



DRINK YOUR DROOL ♡

SUCK

SUCK

MHM

TWITCH



OH HO

LICK

LICK

LICK

C'MON LET ME GO DEEPER ♡



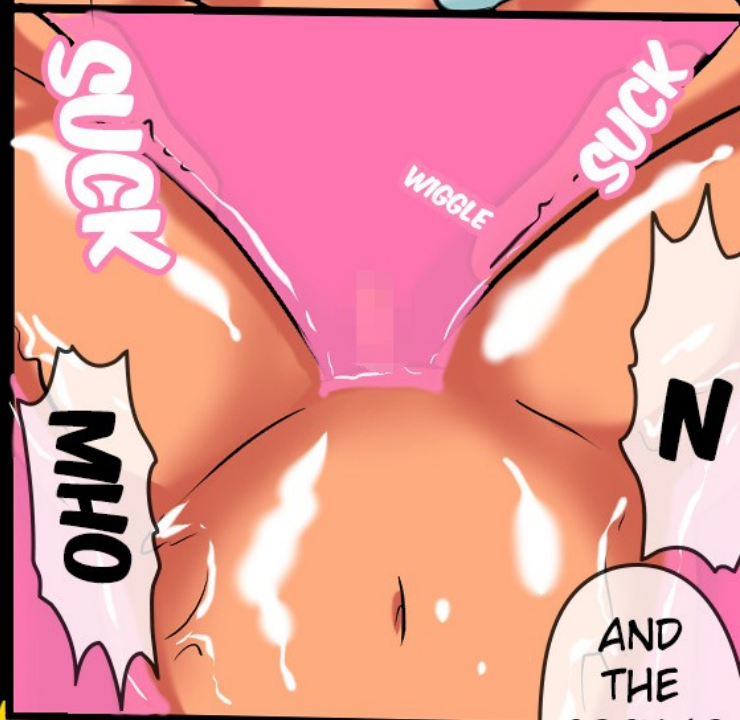
SUCK

POKE

SUCK

NHN

N



SUCK

WIGGLE

SUCK

MHO

N

AND THE COCK IS READY ♡



SPURT

KHAA

YOU MUST LEARN SELF-RESTRAINT OR YOUR SENSITIVE COCK WILL BE LAUGHED AT

TWITCH

SLOSH

SLOSH

SLOSH

SEE, YOU CAME ♡



FAP

FAP

WIGGLE

YOU'RE NOT ALLOWED TO SHOW ONEE-CHAN A HARD COCK

NHAA



ONEE-CHAN'S PANTIES ♡

I WONDER HOW THEY SMELL?



POUT

DON'T LOOK AWAY NOW, OKAY?

CAN YOU SEE?



SPREAD ♡

SPREAD ♡



RUB ♡



ZOOM

AT THIS SLIT ... ♡

HAVE A CLOSER LOOK ♡

THIS PLACE IS COCK'S NATURAL ENEMY

WHY I WONDER?

BOYS LOVE THE PLACE GIRLS PEE FROM

IT MAKES COCKS TWITCH AND STEALS THEIR ENERGY

POKE

POKE

TWITCH

YOUR COCK MUSTN'T GET BIG IN FRONT OF AN ENEMY

SPURT

GH

GH

IT SEEMS I'LL HAVE TO BULLY YOU WITH MY HAND

TREMBLE

FAP FAP

FAP

FAP

STEALING ENERGY... PREVIOUS MAID DID SOMETHING LIKE THAT ...

AND THAT PEARL TOO..?

NOW SPURT

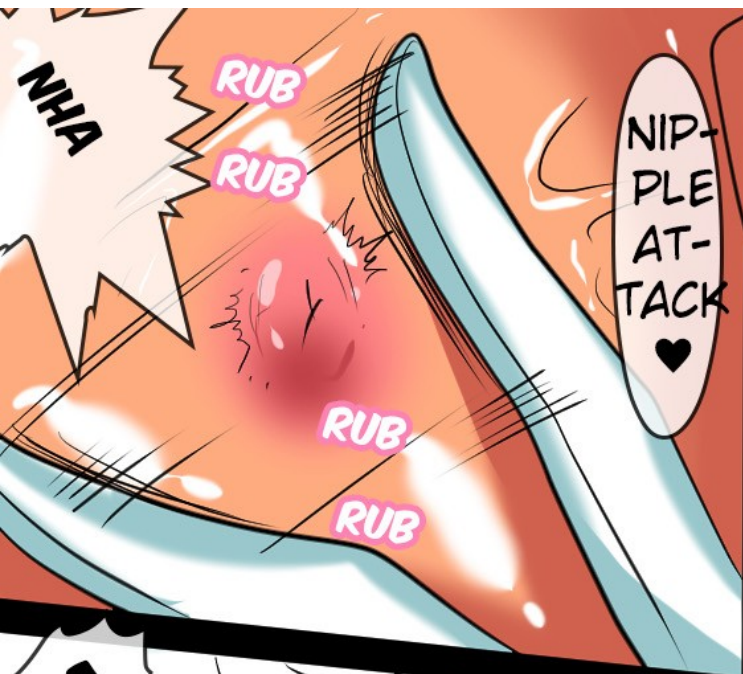
THIS ONE WILL DO THAT TOO!?

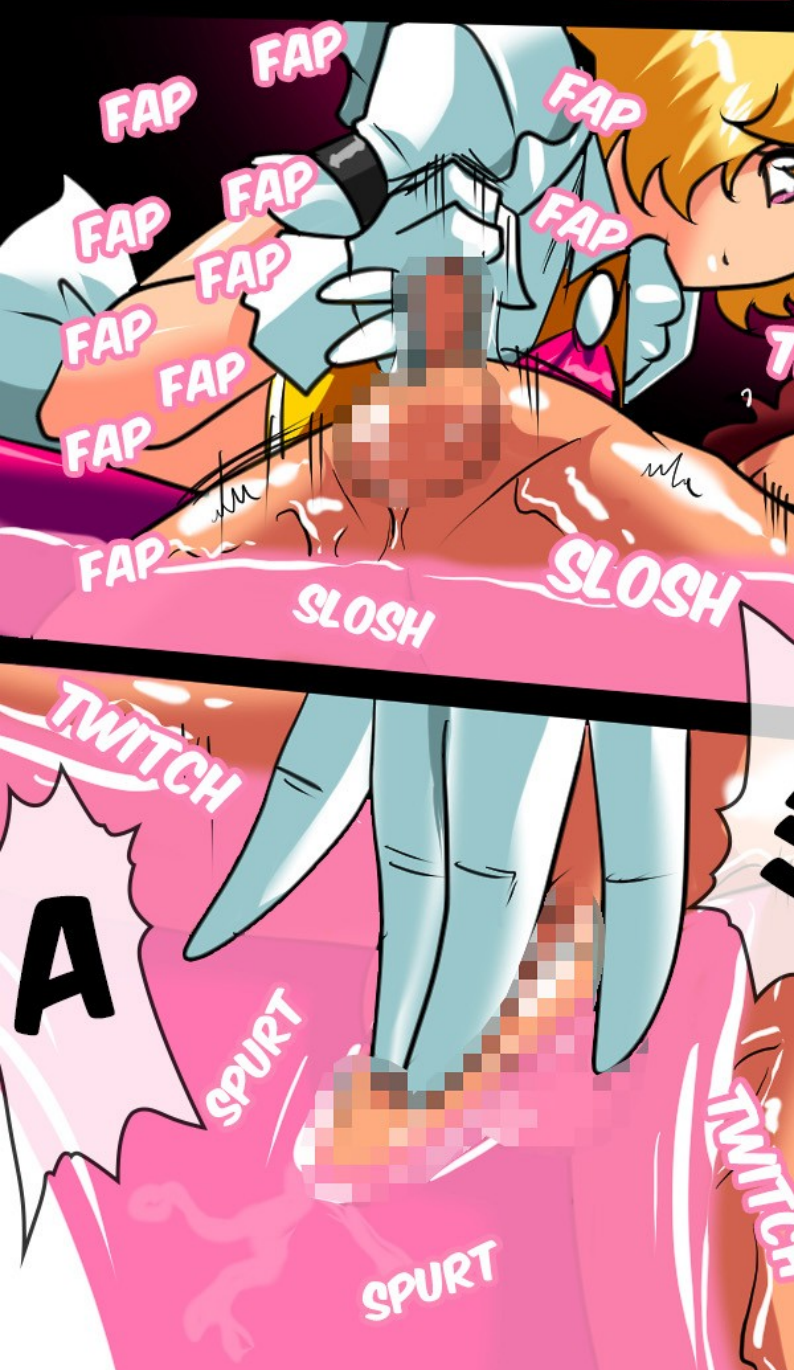
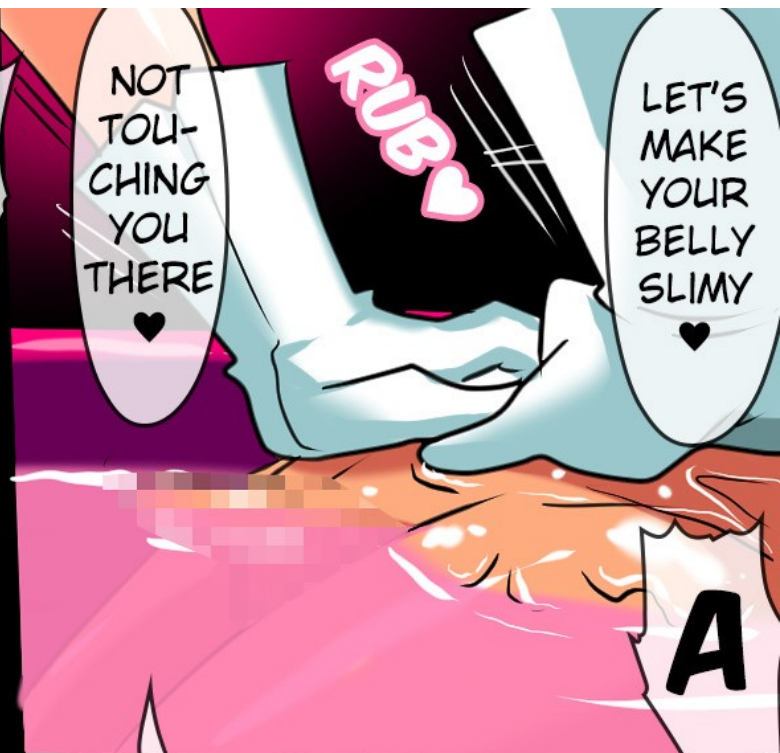
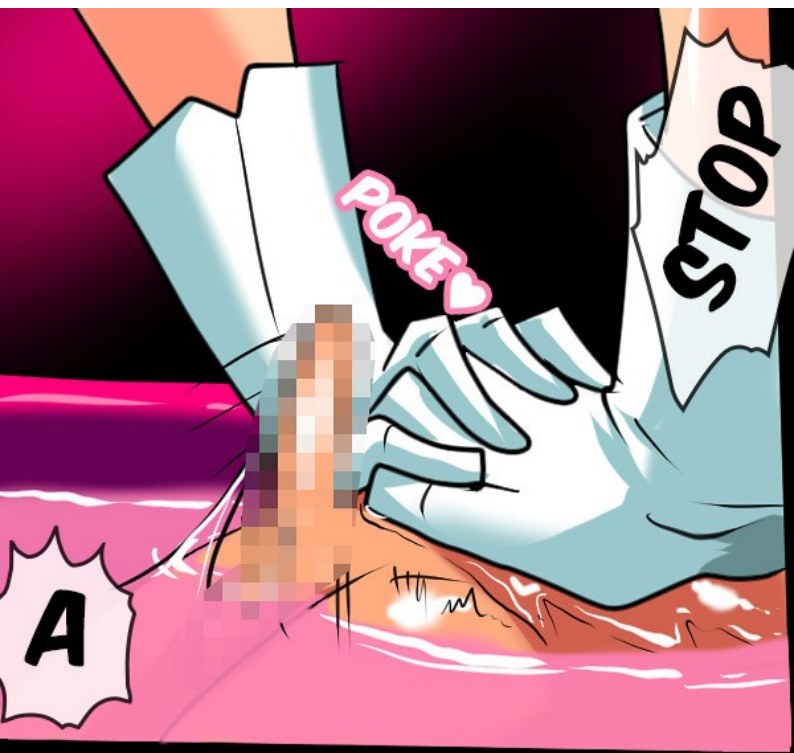
A

A

FAP FAP

N







HM?
WON'T
YOUR COCK
GET BIG
ANYMORE?

YOU
NEED
DIRECT
STIMU-
LATION
AFTER
ALL~

POKE
POKE

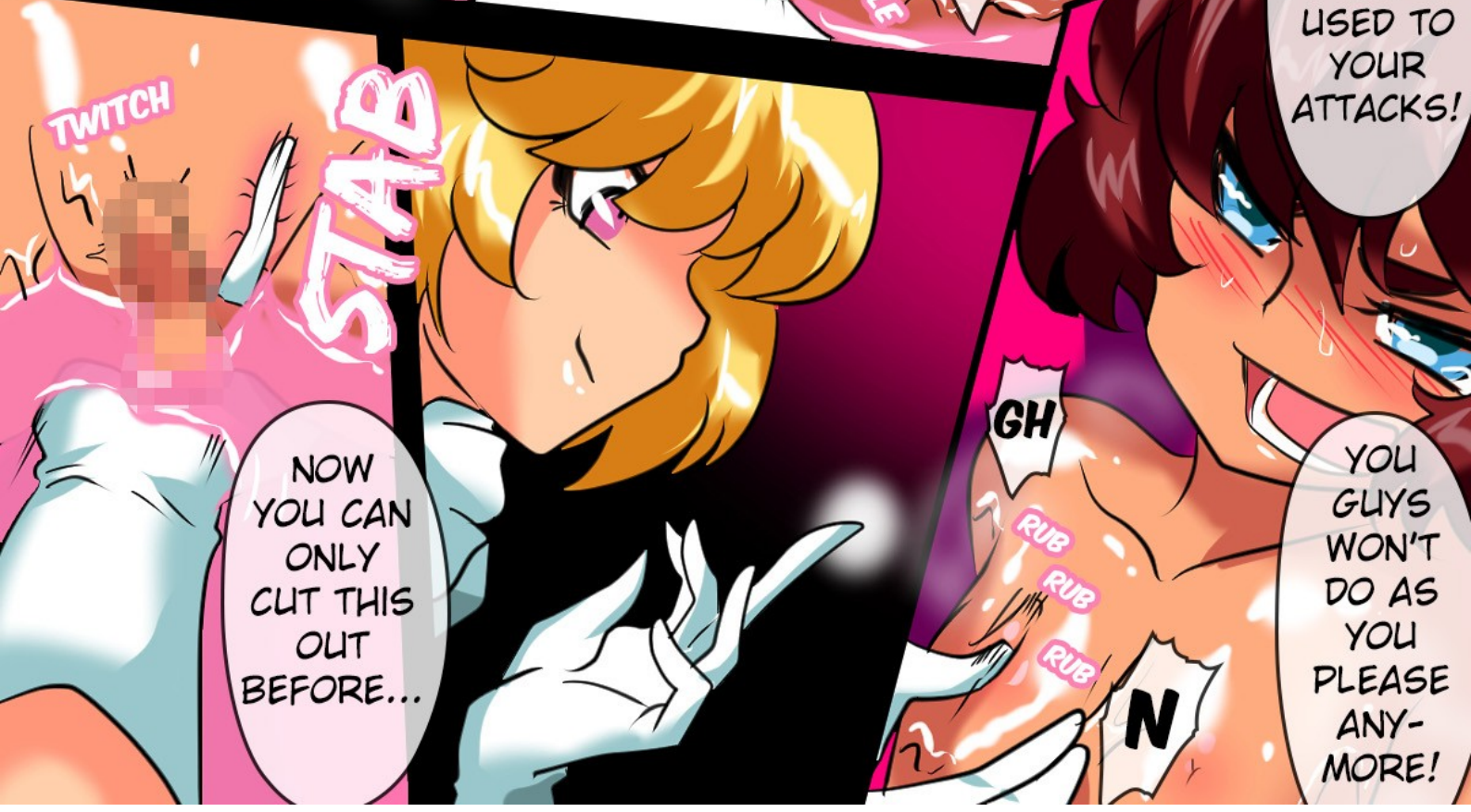
DRIP DRIP

SLIDE

UHA

WOBBLE

HAH!
AFTER
ALL THIS,
I'M
USED TO
YOUR
ATTACKS!



TWITCH

STAB

NOW
YOU CAN
ONLY
CUT THIS
OUT
BEFORE...

GH

RUB
RUB
RUB

N

YOU
GUYS
WON'T
DO AS
YOU
PLEASE
ANY-
MORE!

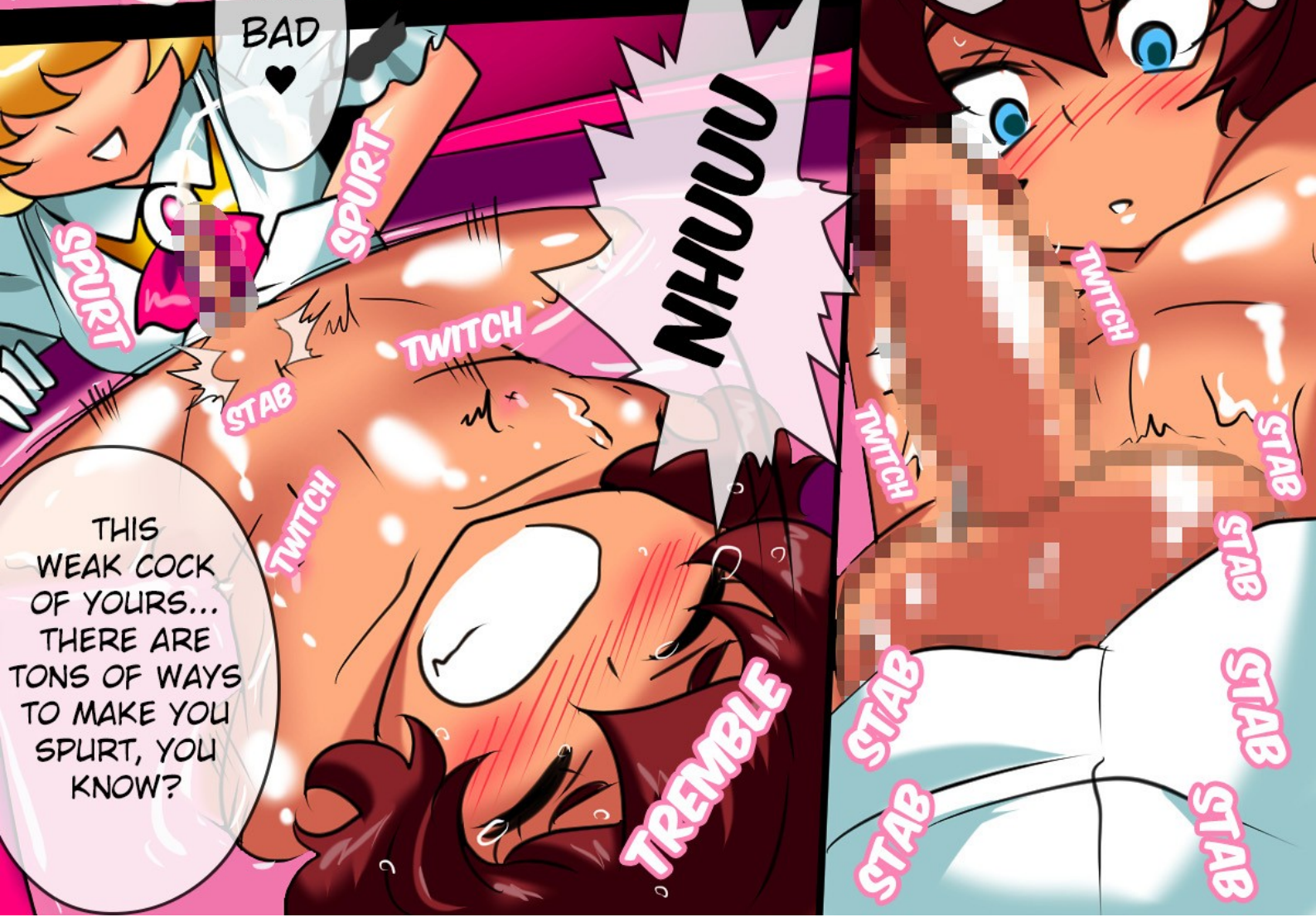


WHAT?

EH?

STAB STAB STAB
STAB STAB STAB

TOO BAD ♡



NHUUU

AH
E

SPURT

SPURT

TWITCH

STAB

TWITCH

TREMBLE

TWITCH

TWITCH

STAB

STAB

STAB

STAB

STAB

STAB

THIS WEAK COCK OF YOURS... THERE ARE TONS OF WAYS TO MAKE YOU SPURT, YOU KNOW?

YOU'VE SPURTED INSTANTLY ♡

BUTT ..?

HAVING YOUR BUTT STABBED FEELS GOOD, RIGHT ♡

HA

SURPRISED? A

YOU CAN'T ENDURE IT ♡

THIS IS THE WEAKEST PART FOR ALL THE BOYS OUT THERE

NHHHH

STAB STAB STAB STAB STAB STAB STAB STAB

HERE, STABBY STABBY ♡

GHH

AM I... WEAK?

A GIRL WITH NO SUPER POWERS IS STEALING YOUR ENERGY ...

YOU SPURT SO MUCH FROM BEING STABBED, IT LOOKS LIKE YOU'RE PEEING ♡

MHN

YOU'RE TOO WEAK, TAKERU-KUN ♡

PUUUUUUUSH

SPURT

TWITCH

SPURT

HA

HA

HOW DOES IT FEEL TO GET THE BACK OF YOUR COCK STABBED? TOO HARD?

HEY! YOU'RE NOT ALLOWED TO GET OUT OF THIS LEWD BATH UNTIL YOUR BODY IS ALL CLEAN

AH

TWITCH

NO

SLIDE

YOU THINK YOU CAN RESIST ONEE-CHAN'S FINGERS? BUT NO MATTER HOW MUCH I STAB YOU, YOU CAN'T DO ANYTHING

HEH, TAKERU-KUN'S COCK FINALLY BECAME HONEST

TWITCH

TWITCH

STAB

STAB

STAB

AND NOW ...

SLIDE

POPE

HU

HU

BADUMP

N

GRR

WHAT IS IT?
PEE?
HOW DOES IT
SMELL?
AND HOW DOES
IT TASTE?
THESE PANTIES
ARE NOW
TAKERU-KUN'S
PROPERTY, SO DO
WHATEVER
YOU WANT
WITH THEM

HERE,
MANIA
ONEE-
CHAN'S
WARM
PANTIES

I'LL
MAKE
YOUR
HEAD
MELT
♥

CAN YOU
SEE THE
STAIN WHERE
IT GOES
AGAINST MY
CROTCH
♥

SPREAD ♥

LIKE
IT?
BUT
DON'T
LOSE
YOUR
HEAD~

YOU
CAN'T RUN
NOW...
MY ODOR
WILL RAPE
YOUR MIND
DIRECTLY
THROUGH
YOUR
NOSTRILS...

SOUR
♥

SNIFF

SLAM

TWITCH

FLU
FLU
FLU

U
HU

NOT
LIKE
PEARL
♥

NOW
TAKERU-
KUN HAS
A PANTY-
MASK
♥

OPEN

HU

N

HU

HU

HU



TWITCH

CROTCH
ATTACK
TIME
♥

SLAM

UGH

WHY?
WHY DOES
A GIRL'S
CROTCH
ATTACK
FEEL SO
GOOD?

SO
GOOD,
RIGHT?

HERE,
ONEE-
CHAN'S
CROTCH IS
ATTACKING
TAKERU-
KUN'S
COCK

SLAM-
SLAM
♥
SLOSH-
SLOSH
♥

BAM

BAM

BAM

SLOSH

SLOSH

FU

FU

WHAT
WILL
TAKERU-
KUN'S
COCK
GIVE TO
MY
CROTCH?

SLOSH

BAM

BAM

MY
PENIS
IS
MELT-
ING
♥

BAM

TREMBLE

TREMBLE

AH
♥

U

AND I'LL HELP YOU OUT ♡

BAM

JUST GIVE UP ♡

SLOSH

BAM

NHU

U

SLAM SLAM SLAM ♡

HU

HU

BAM

TREMBLE

WHY... AM I BEING SWALLOWED BY A GIRL'S PEE HOLE?

IT'S SO WARM AND SLIMY INSIDE... AND IT'S COILING AROUND ♡

U

HU

WHAT'S WITH YOU? LETTING OTHERS TO PIN YOU DOWN AND RIDE YOU

U

HSLOSH

HSLOSH

N

BUT HAVING A PERVERTED HERO-SAN LIKE TAKERU-KUN TO ACTUALLY TRY TO RESIST IT SILLY, RIGHT?

MY COCK FEELS SO GOOD ♡

HU

BUT TAKERU-KUN HAS ALREADY LOST, THERE'S NOTHING TO FIGHT AGAINST, SIMPLY LET ONEE-CHAN PLAY WITH YOUR COCK

SLOSH

AWE-SOME
... SHE CAN DO THIS TOO...?

SLAM

TIME FOR THE FINISHER
♥

BAM

BAM

SLAM

BAM

BAM

BAM

BAM

THAT YOU ARE RAPED...
♥
OR I WON'T STOP

TRY SAYING IT

WHEN A GIRL DRAINS BOY'S ENERGY THROUGH HER CROTCH
♥

SAY THIS... IS CALLED RAPE, RIGHT?

SLOSH

SLOSH

SLURP

SLURP

???

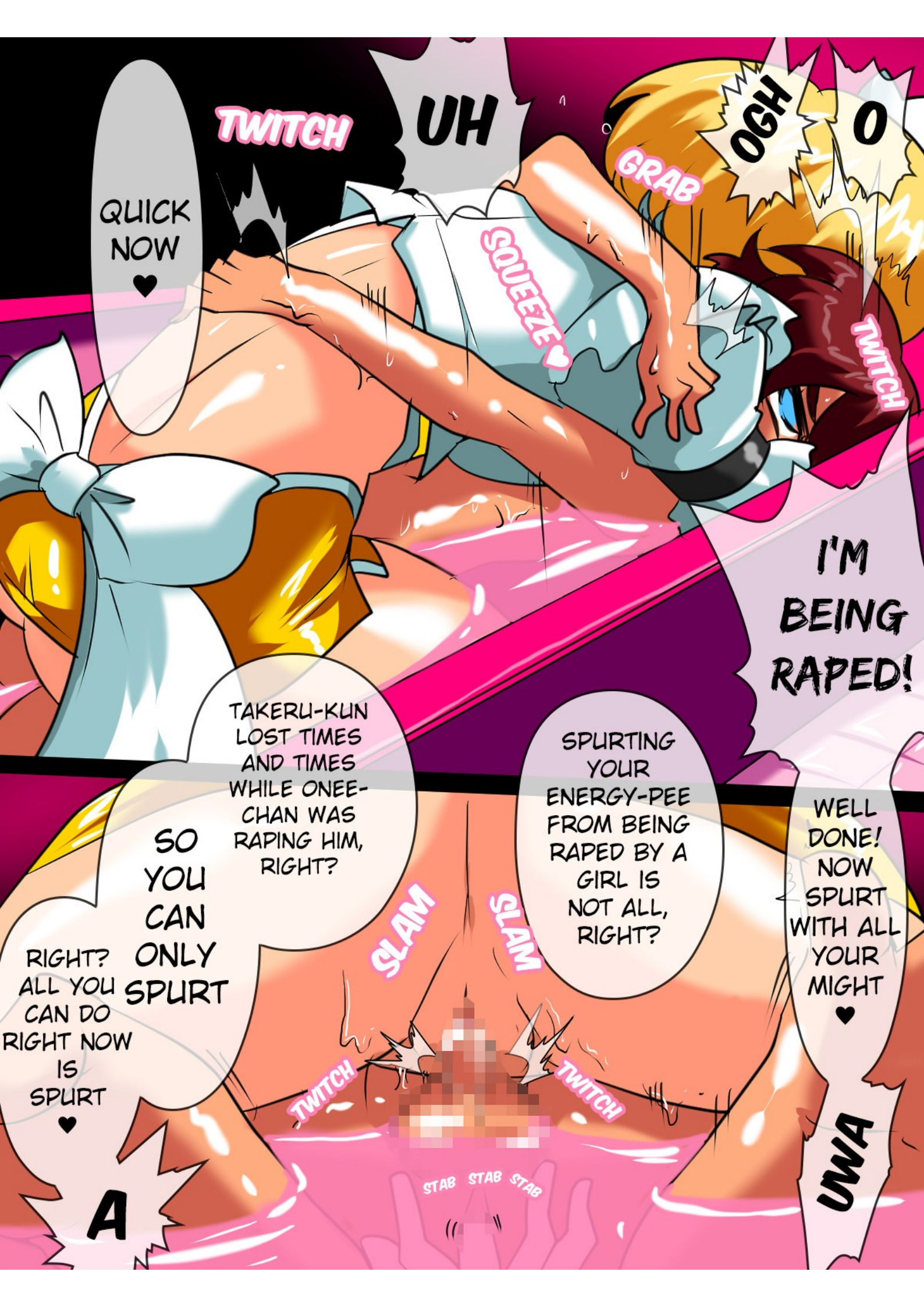
C'MON
♥

STAB

STAB

STAB

STAB



TWITCH

UH

GRAB

OGH

O

QUICK NOW
♥

SQUEEZE ♥

TWITCH

**I'M
BEING
RAPED!**

TAKERU-KUN
LOST TIMES
AND TIMES
WHILE ONEE-
CHAN WAS
RAPING HIM,
RIGHT?

SPURTING
YOUR
ENERGY-PEE
FROM BEING
RAPED BY A
GIRL IS
NOT ALL,
RIGHT?

WELL
DONE!
NOW
SPURT
WITH ALL
YOUR
MIGHT
♥

SO
YOU
CAN
ONLY
SPURT

RIGHT?
ALL YOU
CAN DO
RIGHT NOW
IS
SPURT
♥

SLAM

SLAM

TWITCH

TWITCH

STAB STAB STAB

UWA

A

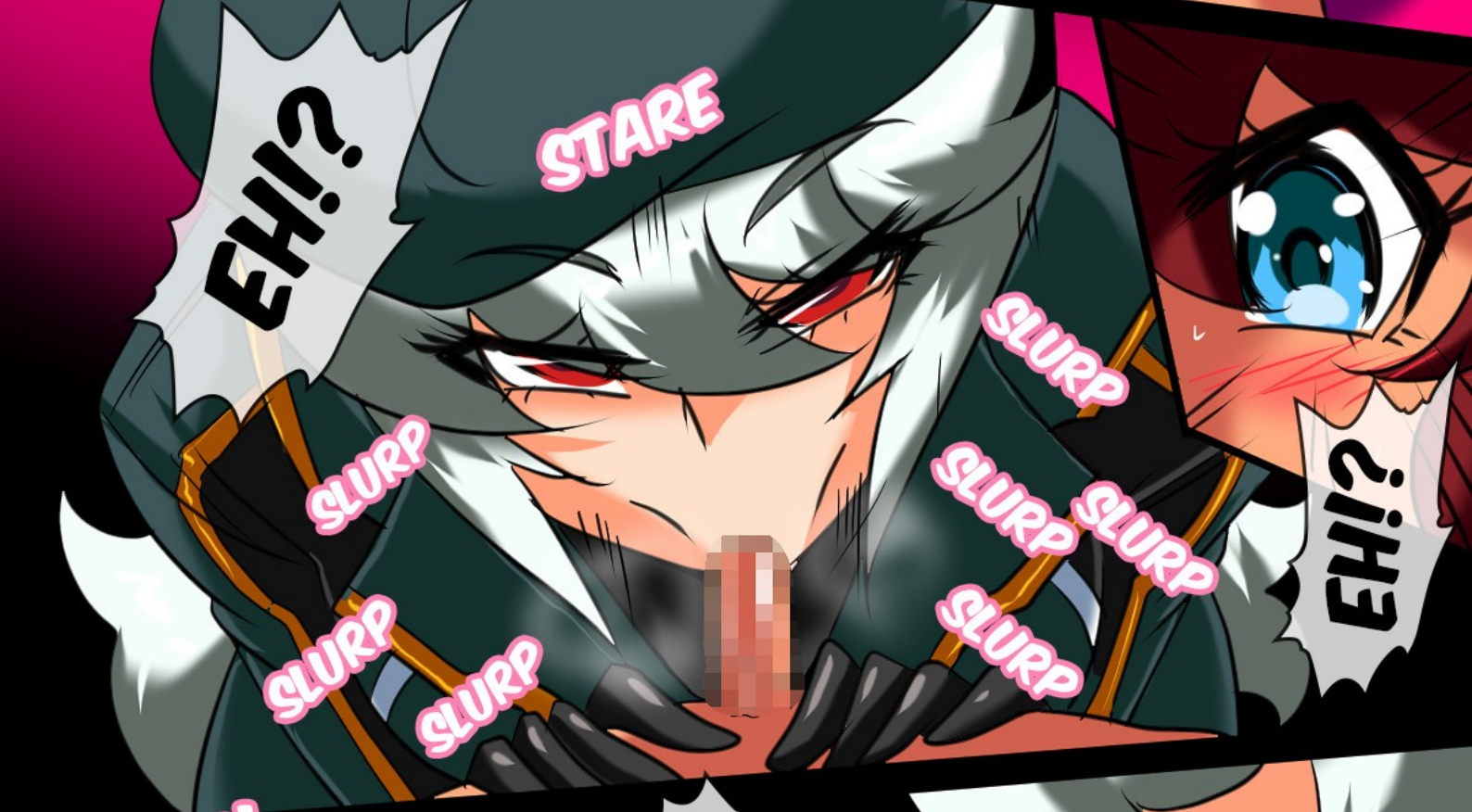




HM...
WHA...
I'M...

SLURP
SLURP
SLURP

SLURP
SLURP
SLURP



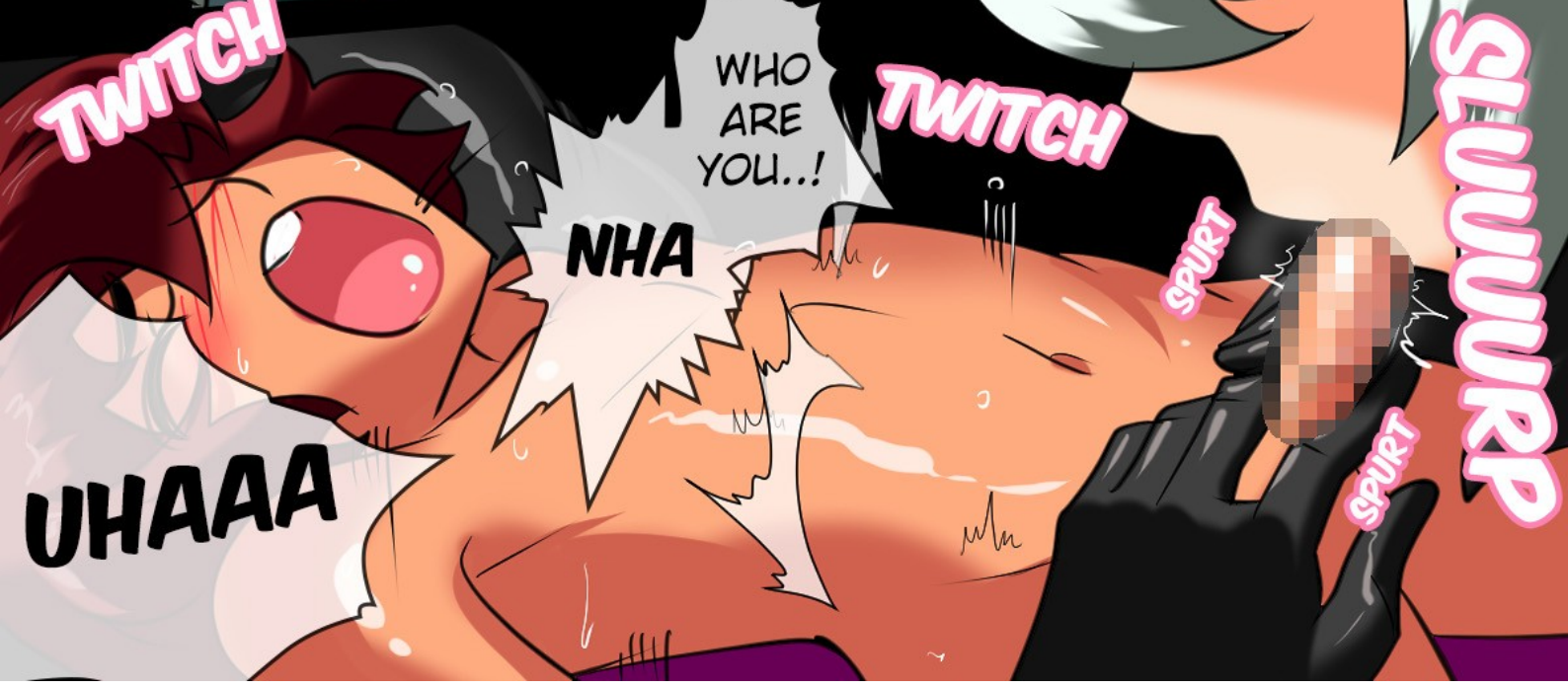
EH!?

STARE

SLURP
SLURP
SLURP

SLURP
SLURP
SLURP

EH!



TWITCH

WHO
ARE
YOU..!

TWITCH

NHA

SPURT
SPURT

SLUUUURP

UHAAA

WHO ARE YOU!

HA

GUURP

HA

THE HEAD OF VIOLET PHEROMONE'S JAPANESE BRANCH... THEY ALSO SOMETIMES CALL ME BOSS

I'M COMMANDER ANBARERU ...

NHA

SPARK

ONEE-SAN PRETTIED YOU UP ♡

SHE IS ...

WELCOME, ENDOU TAKERU ...

THE BOSS!

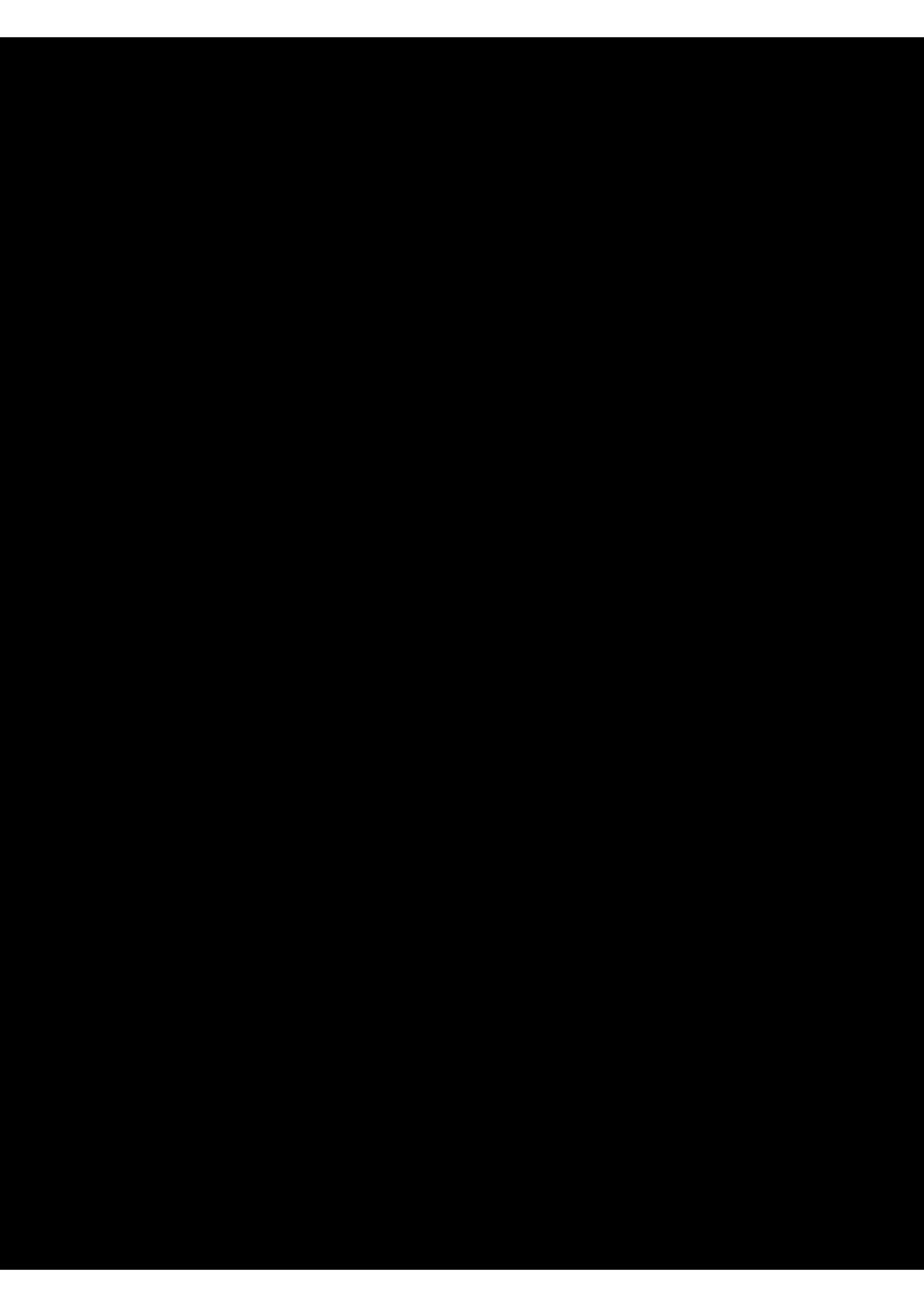
BLUSH

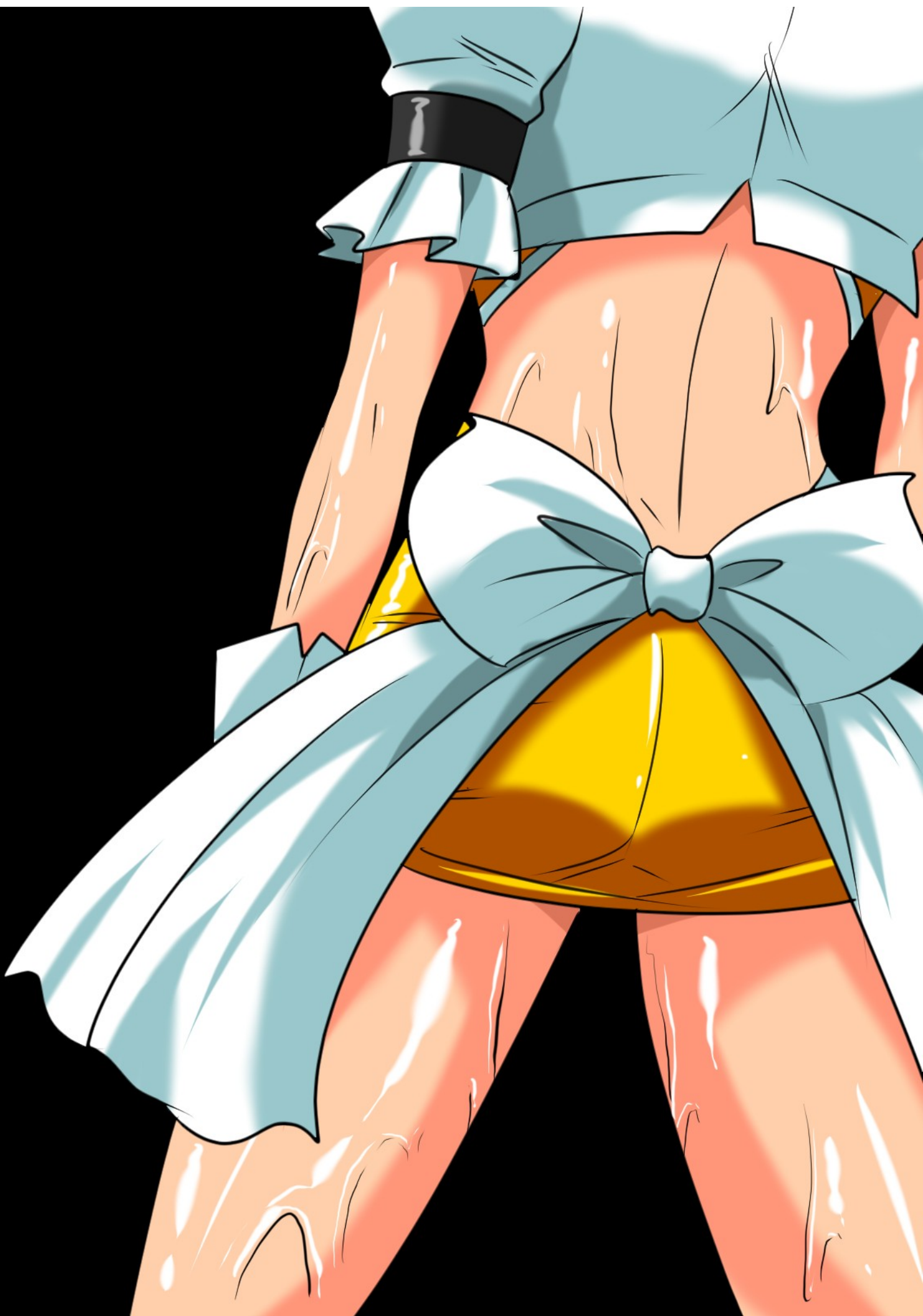
OH...

THIS IS
GETTING
INTERESTING
♥

I
THOUGHT
MY MAIDS
WORE YOU
OUT...
BUT YOU
STILL HAVE
ENOUGH
ENERGY TO
TRANS-
FORM...

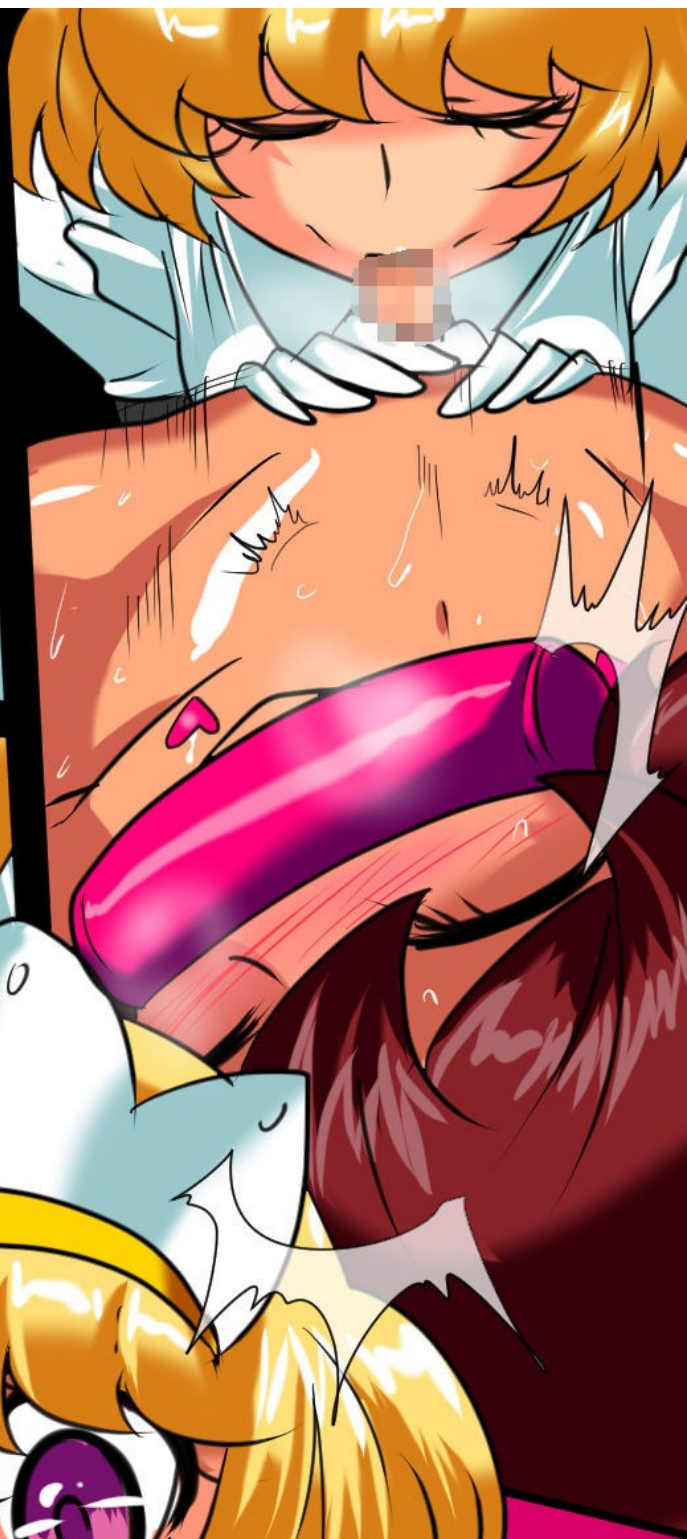
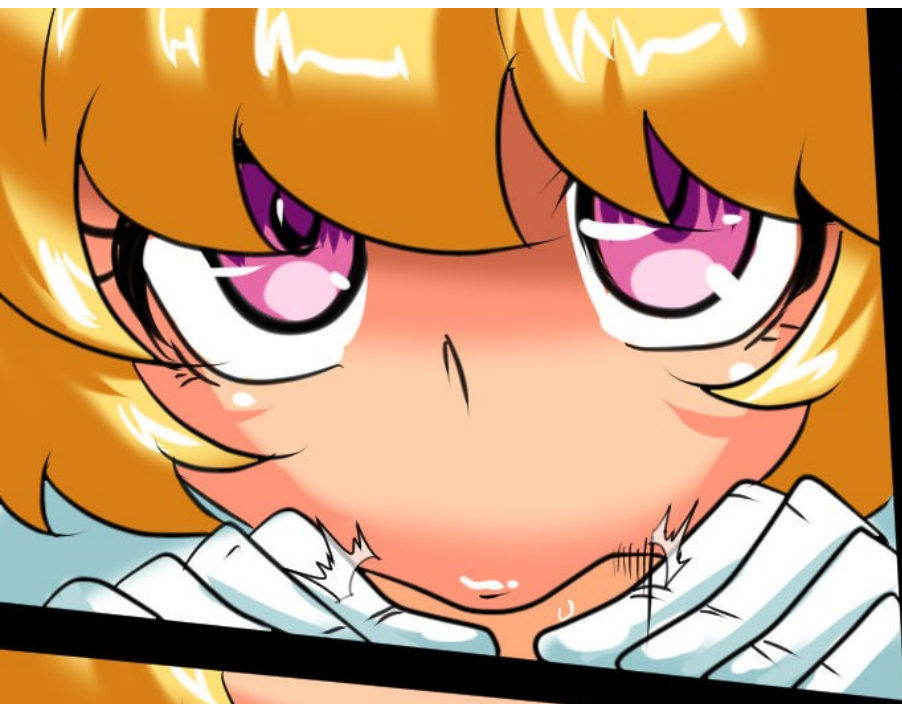
TO BE
CONTINUED!



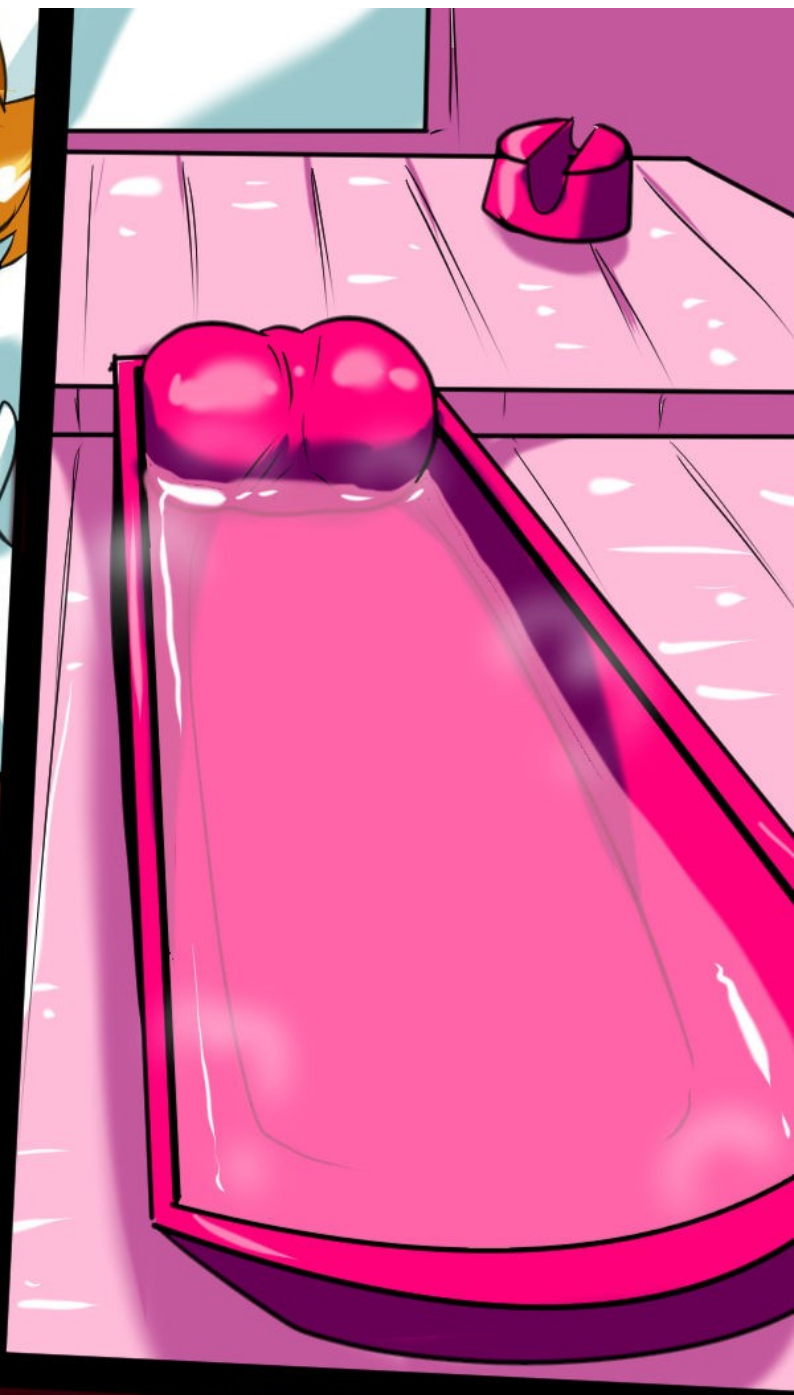








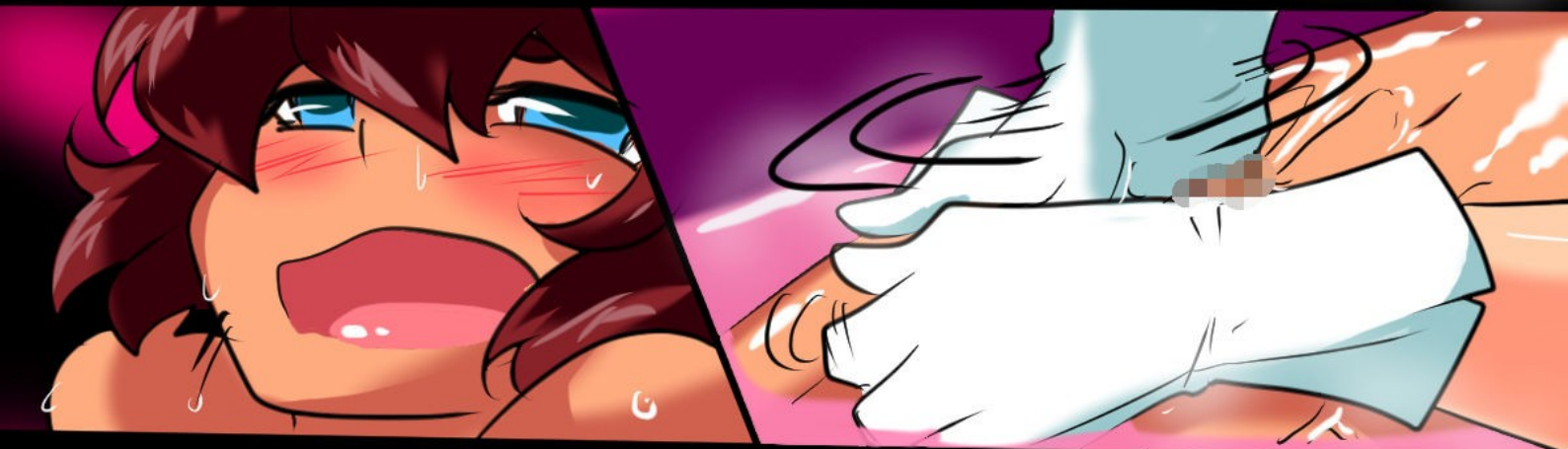
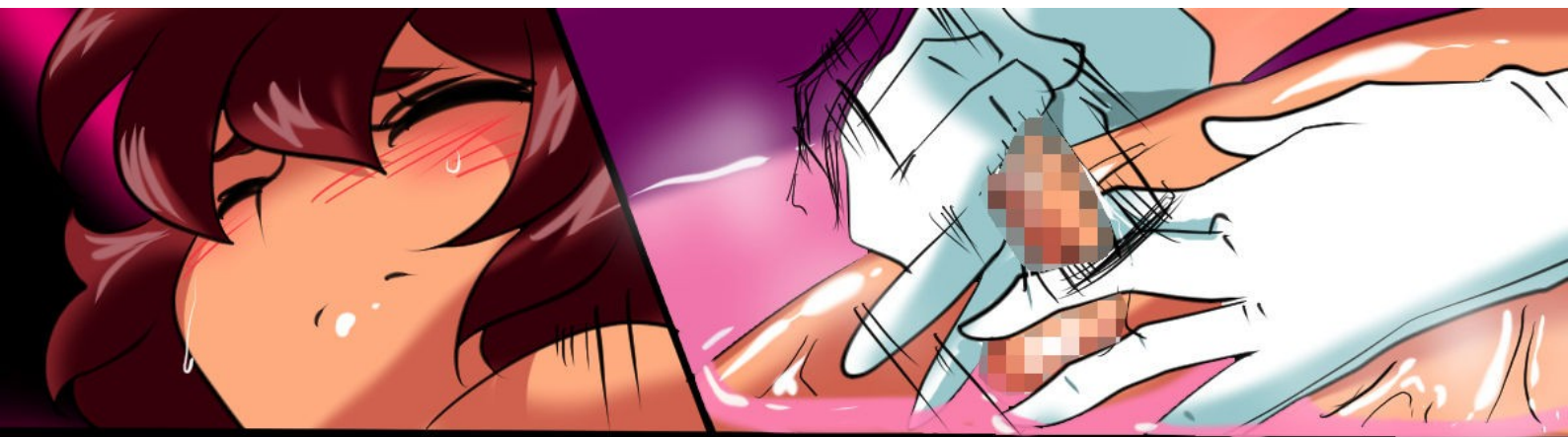








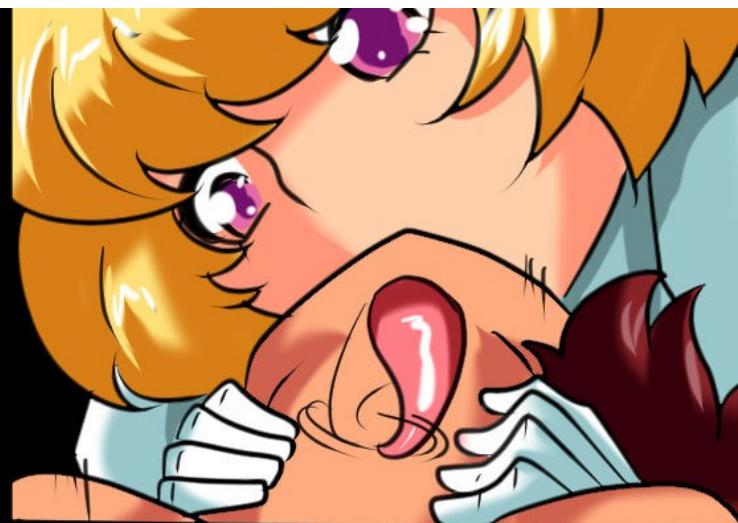
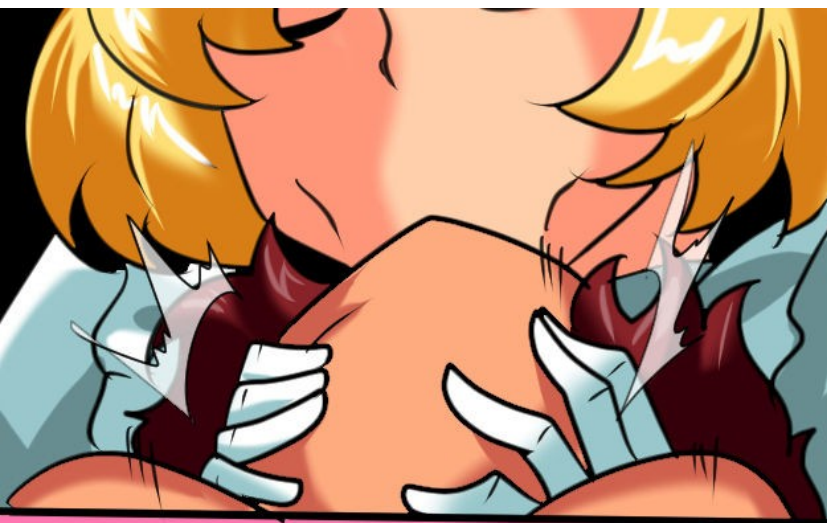






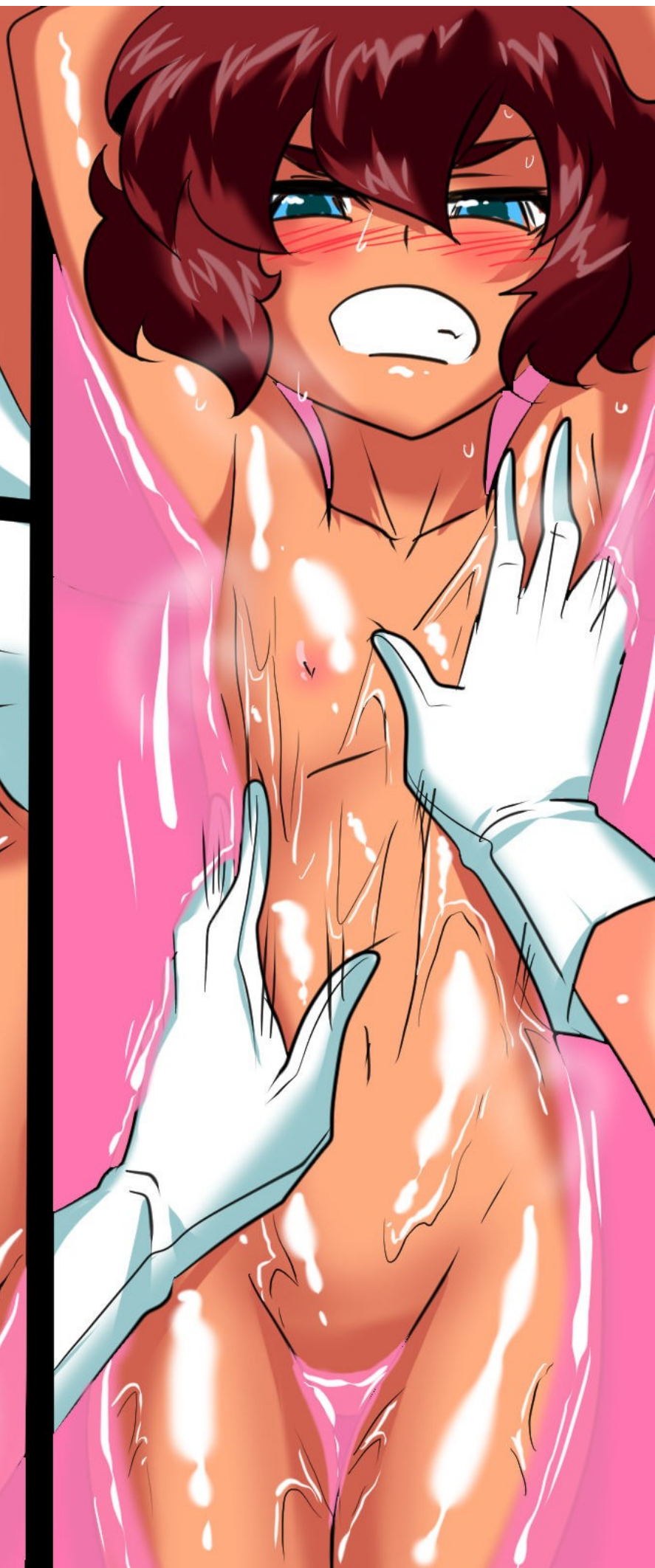
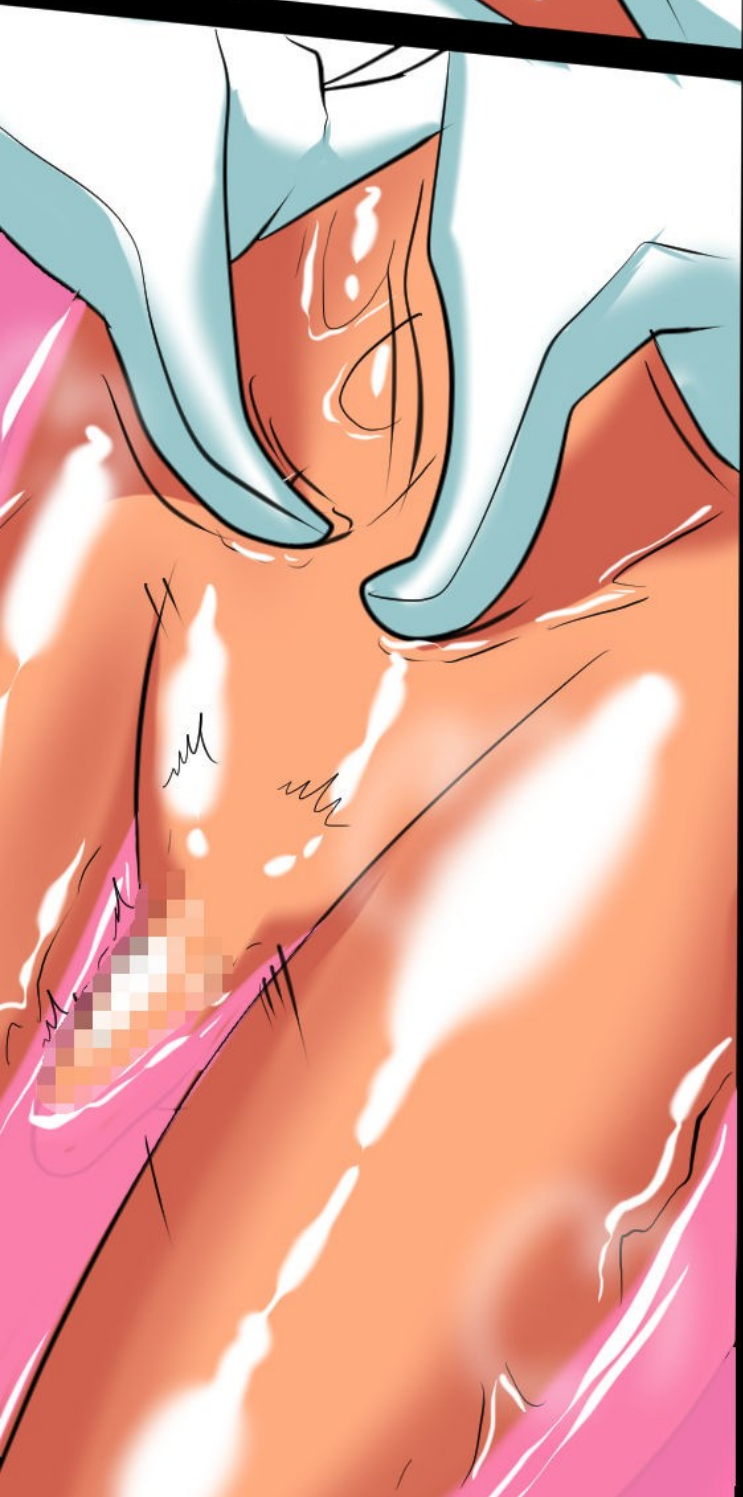
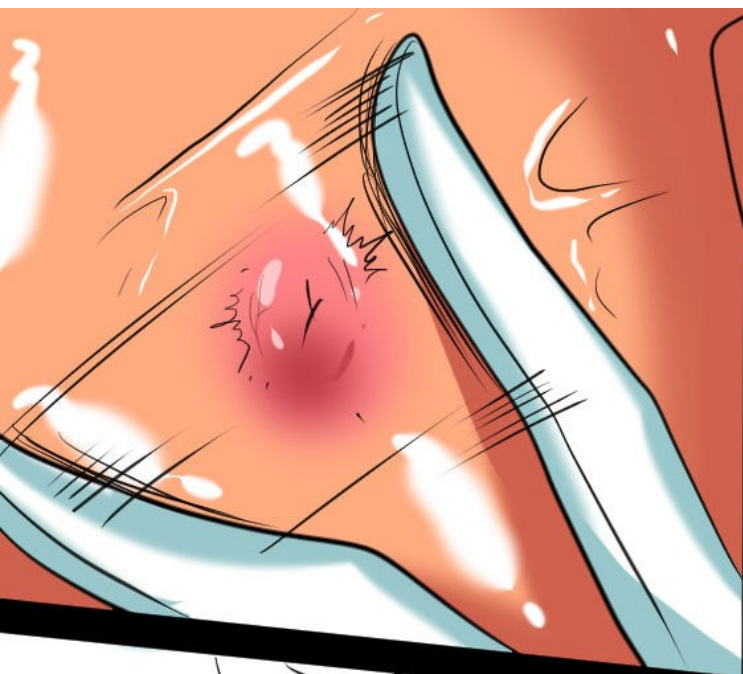


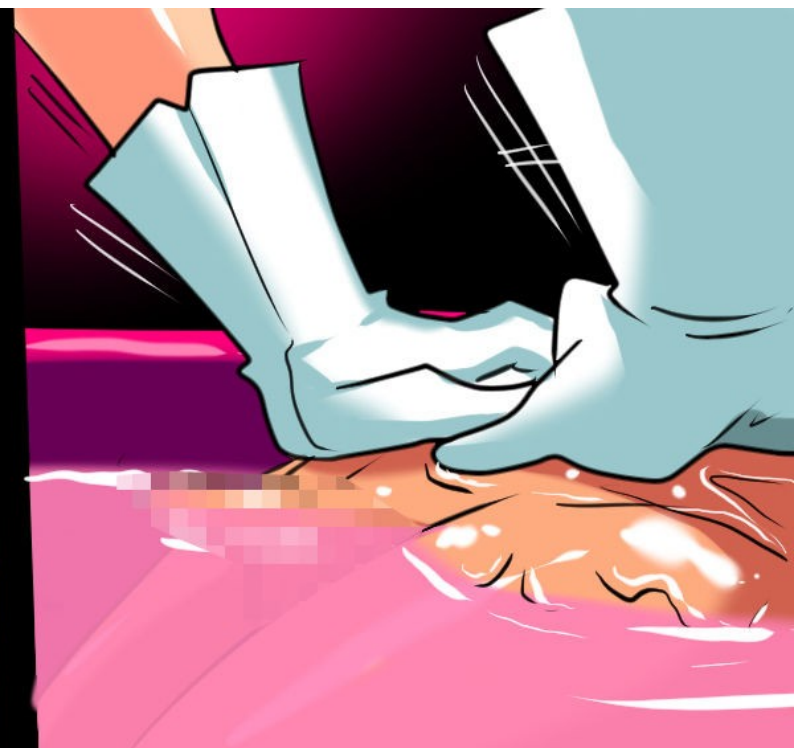
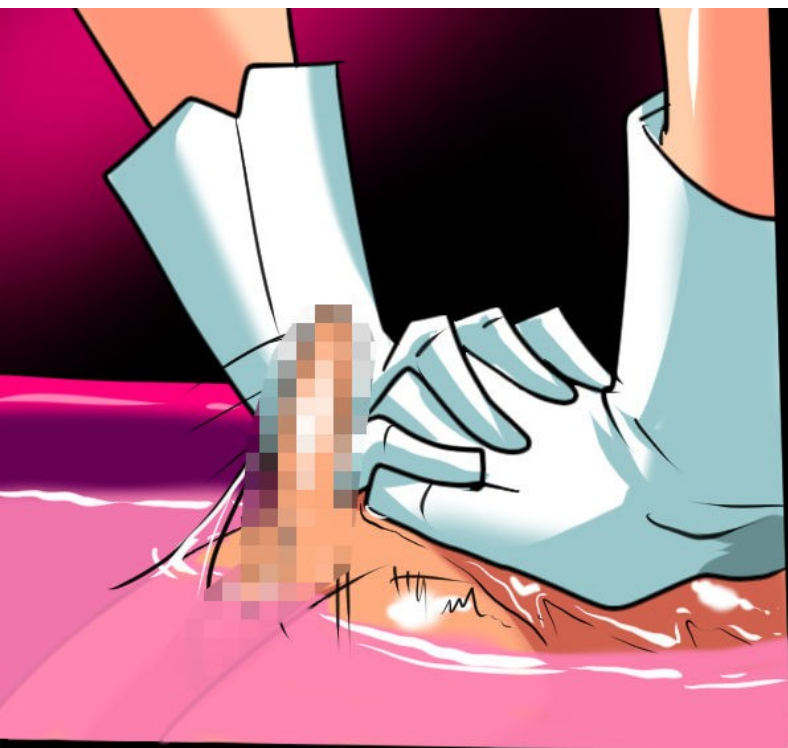




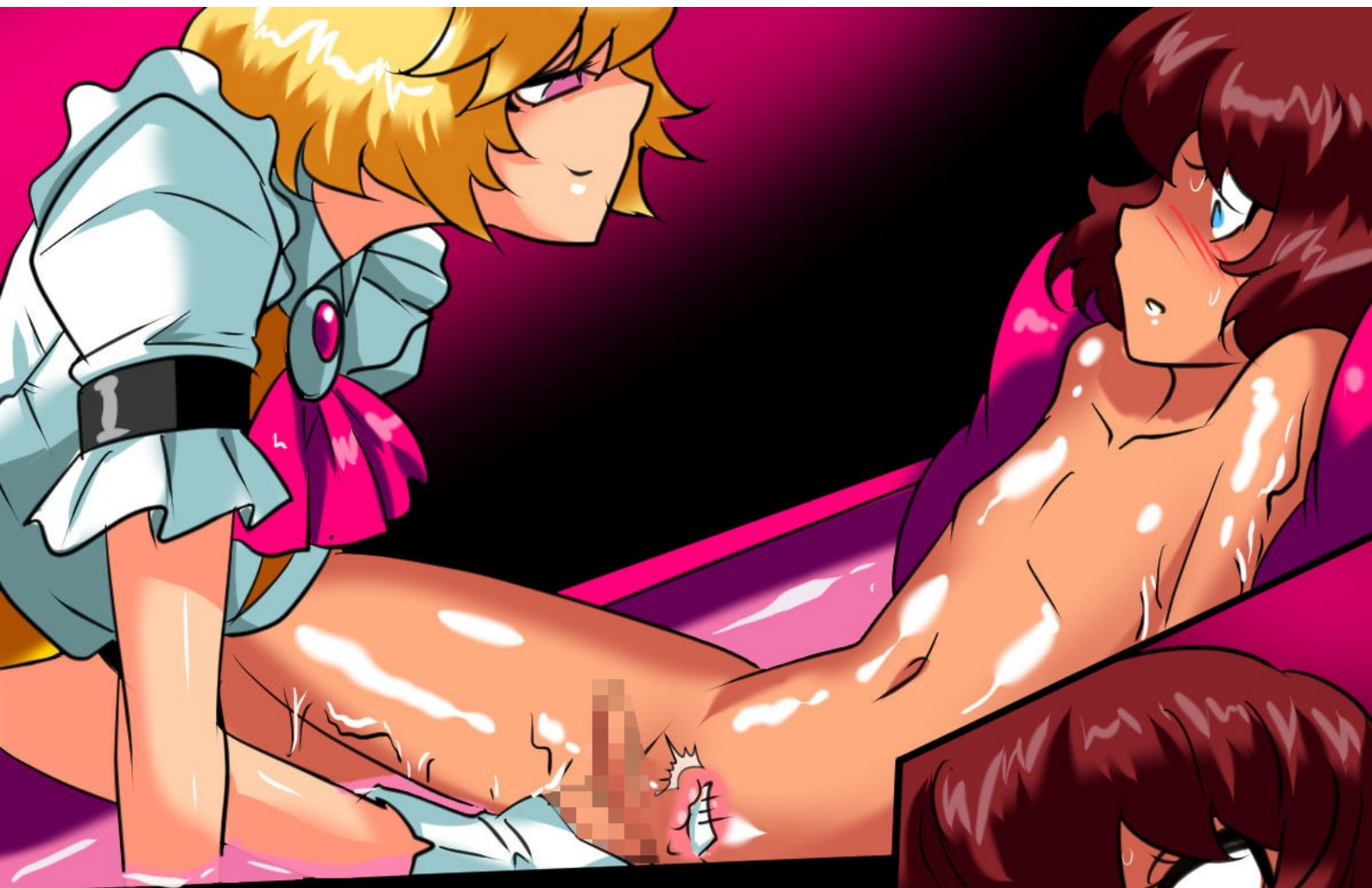










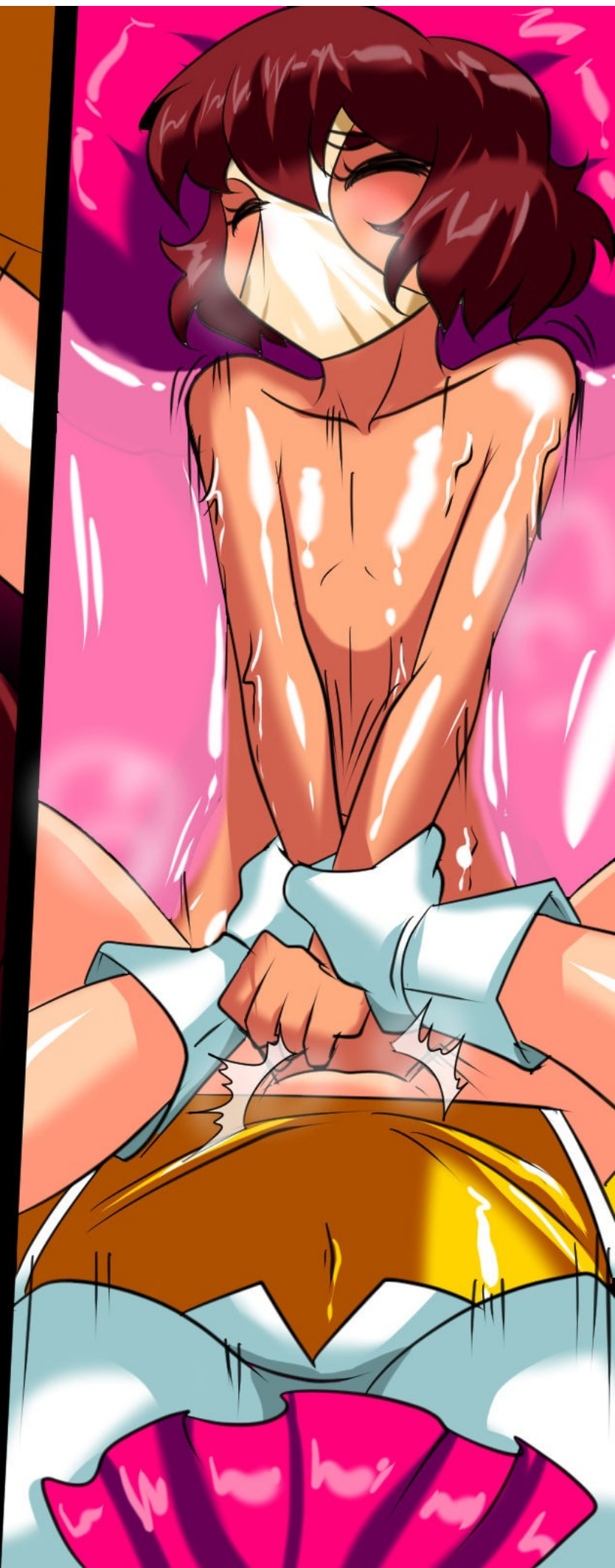




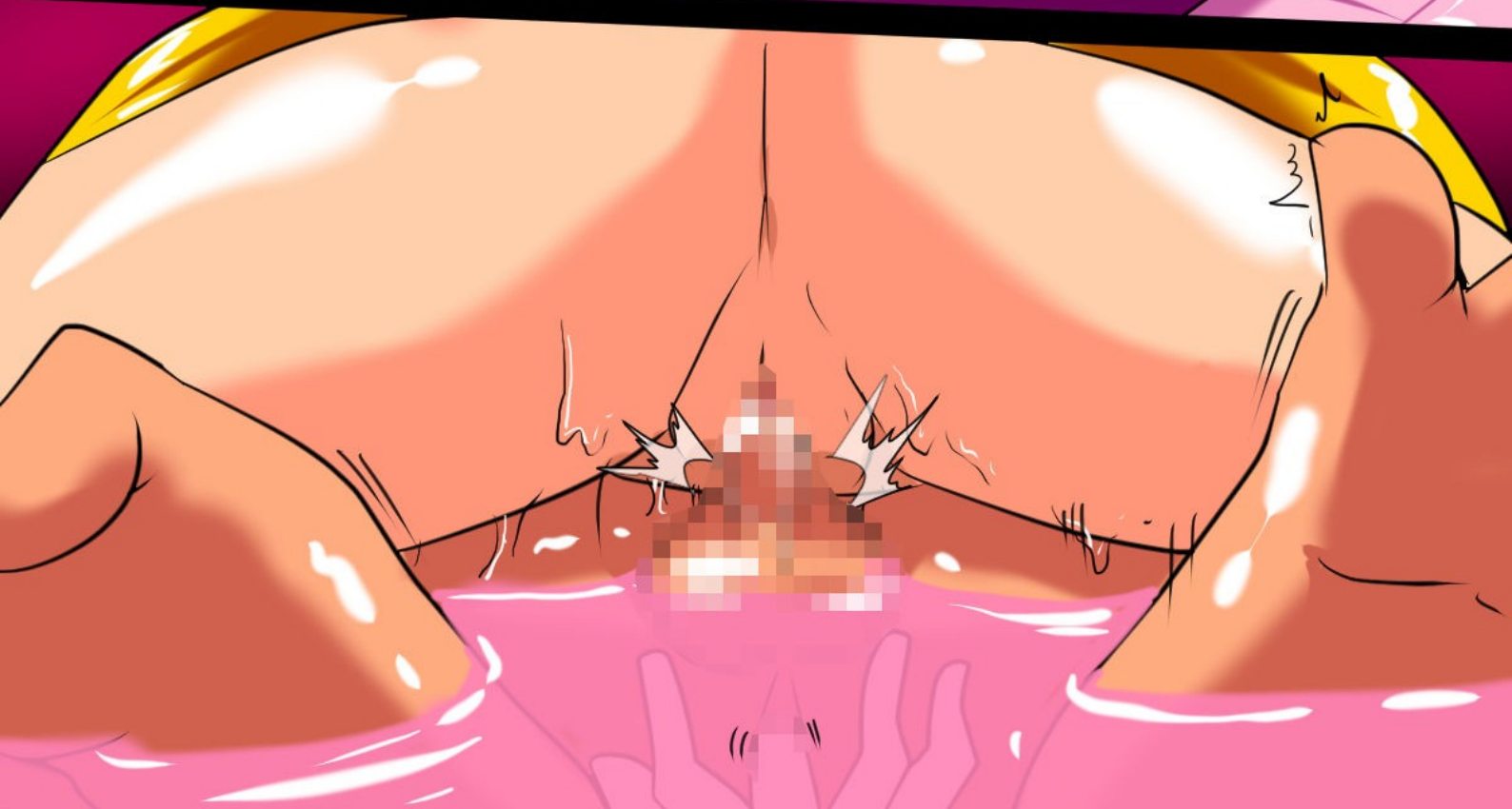
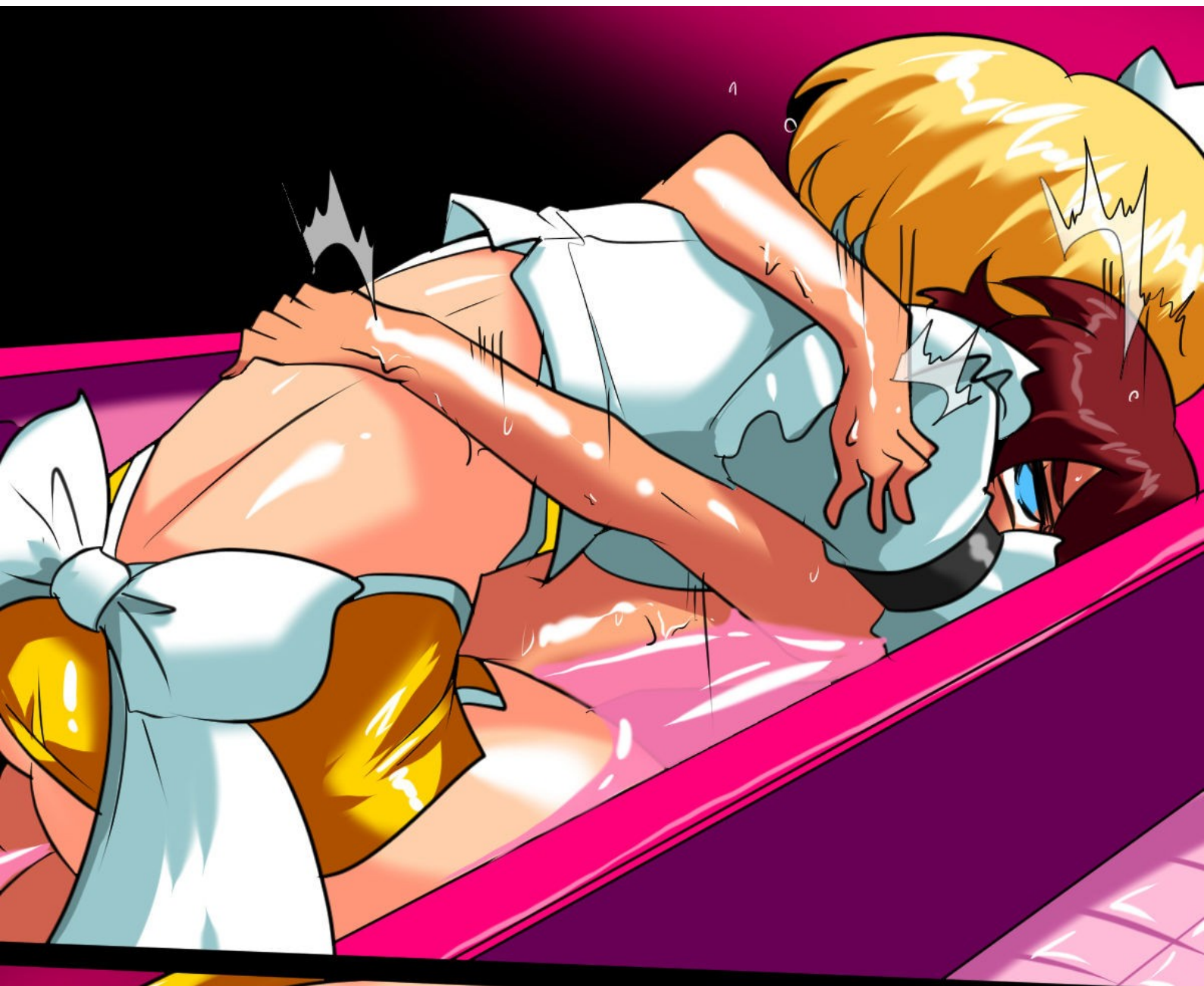










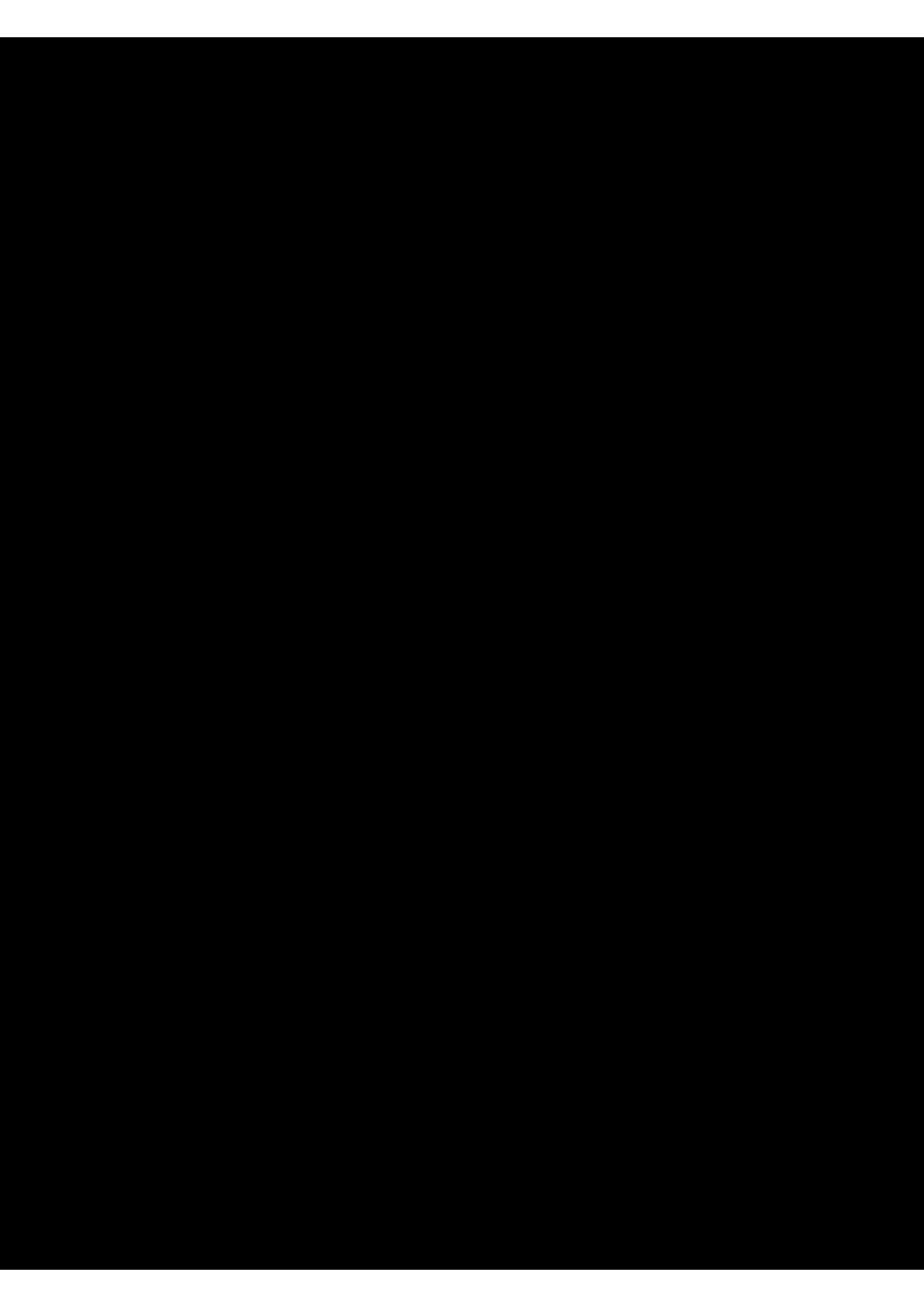


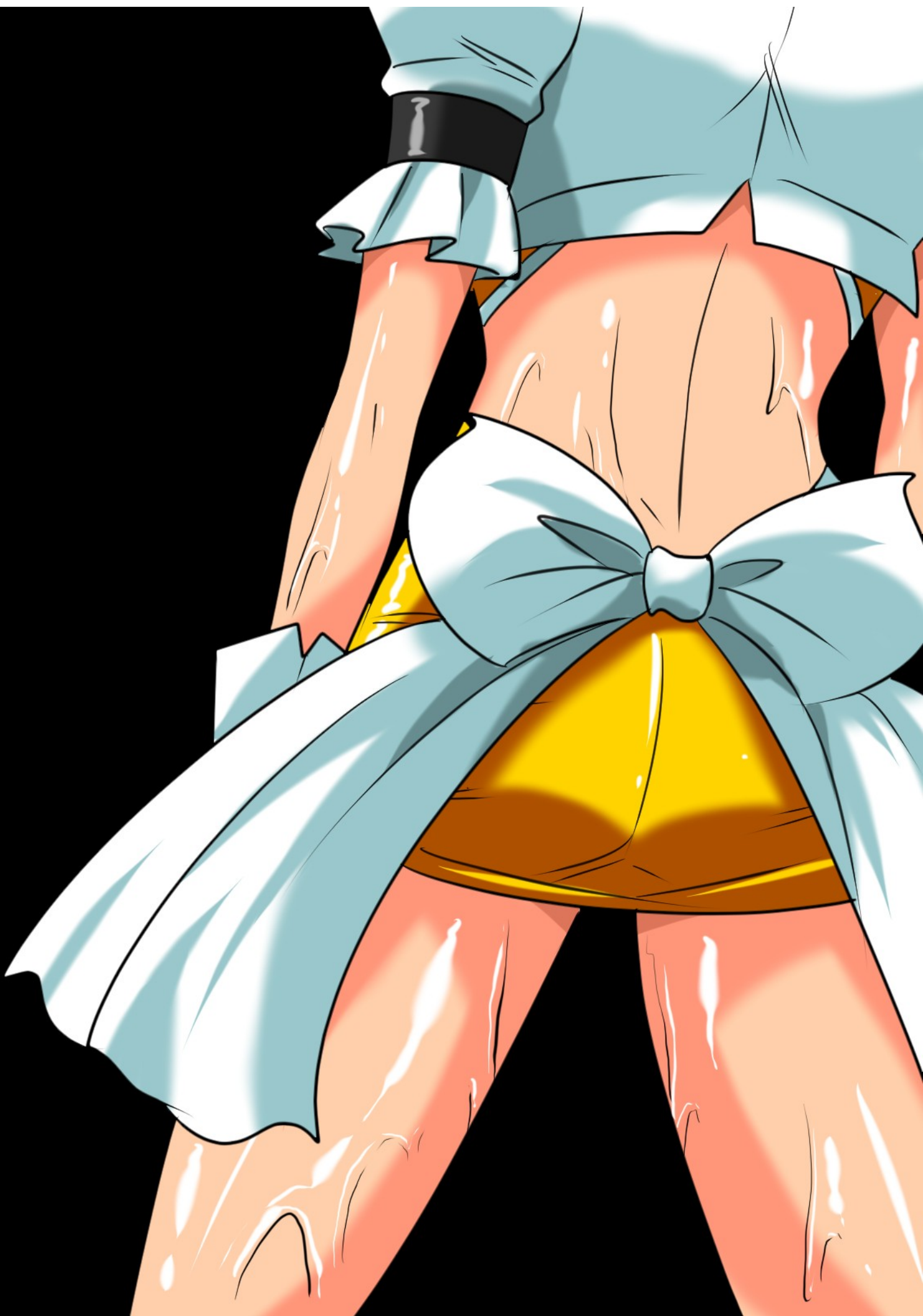














TRANSLATED BY
MONGOLFIER.WORDPRESS.COM

EDITED BY
BIGK4OK

COMMISSIONED BY
RELOADER14