



...WHAT, TUNA IS HERE AGAIN?

Ugh, I told her not to mess up the shoes.

AH!

It's Tet-chan!



AAH... I ENDED UP TAKING TOO MANY SHIFTS DURING THE POST-EXAMS BREAKS...

A cheer-ful and energetic welcome ♪



Tet-chan! Tet-chan!

Tet-chan!!

Happy Birthday!!

ロリ萌えプリンセスが本誌初登場!!

ユイザキカズヤ

Kazuya Yuizaki

...TUNA, WE NEED TO TALK.

Okaa-aay!

TSUNA-KAN.

つなかん



Hurry up~  
Hurry up~

LOOKS LIKE IT ENDED UP LIKE THIS BECAUSE SHE ACTUALLY DID WHAT HER FRIEND SAID AS A JOKE.

NO MATTER HOW MUCH TIME PASSES, SHE JUST WON'T GROW UP MENTALLY.



...IT'S TRUE THAT TODAY IS MY BIRTHDAY, BUT--

First of all, who is this! Aki-chan?

My friend from class!!

AND THEN, Y'KNOW? AKI-CHAN SAID, WHY NOT JUST MAKE YOURSELF HIS PRESENT.



THIS AKI-CHAN REALLY SHOULD THINK ABOUT WHO SHE'S TEACHING THIS STUFF TO...  
And stop moving.

AKI-CHAN SAID THAT ANY GUY WOULD DEFINITELY GET EXCITED, BUT THAT'S NOT TRUE I'LL AT ALL, SCOLD IS IT? HER THE NEXT TIME I SEE HER.  
Gyaaah!



HOW SHOULD I PUT IT... SHE'S TOO DEFENSELESS.

The feeling of freedom after being released, it feels good!



THANKS!

YOUR FRIEND WILL BE DISAPPOINTED IN YOU.  
There, done.





I SEE, SHE'S NOT LISTENING.

Ooh, a new lewd manga!?

Tet-chan, good job!



YOU'RE NOT GETTING INVOLVED WITH WEIRD GUYS SOMEWHERE WITHOUT ME KNOWING, ARE YOU?

I WAS GOING TO LECTURE YOU, BUT NOW I'M GETTING WORRIED ABOUT YOUR FUTURE.



I- I HAVE A PERFECTLY GOOD NAME, "SATSUNA"!!

WAIT A MINUTE! I CAN SEE IT! I CAN SEE IT, Y'KNOW!?



YOU CALLED ME A TUNA AGAIN!

YOU'RE REALLY... YOU REALLY ARE A TUNA.



TUNA IS A GOOD ENOUGH NICKNAME FOR SOMEONE WHO CAN'T STAY STILL LIKE YOU.

OOH, YOU'RE SO MEAN, TET-CHAN!  
ALWAYS CALLING ME BY THAT WEIRD NICKNAME!



I DON'T THINK SHE'S DOING THIS ON PURPOSE, BUT THESE OCCASIONAL SURPRISE ATTACKS ARE TROUBLESOME.

UM... HUH? TET-CHAN?



IF IT GOES ON LIKE THIS...

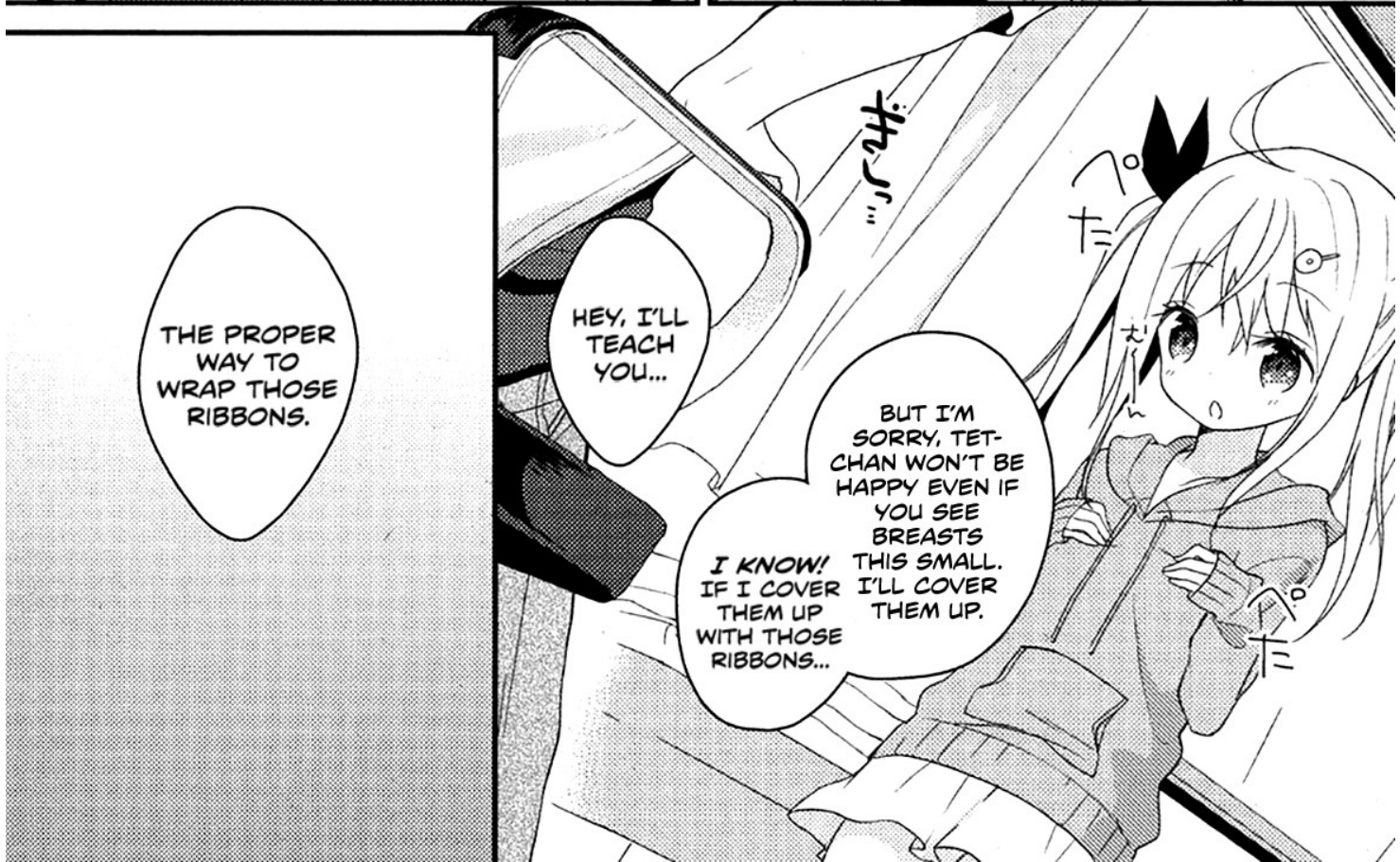
THERE SHOULD BE A LIMIT TO HOW DEFENSELESS YOU CAN BE.

I USUALLY COME TO TET-CHAN'S PLACE LIKE THIS.



AH, EHEHE. I THOUGHT IT WOULD BE FINE SINCE WE'RE NEIGHBOURS.

YOU... HOW SHOULD I SAY THIS... YOU SHOULD WEAR A BRA.

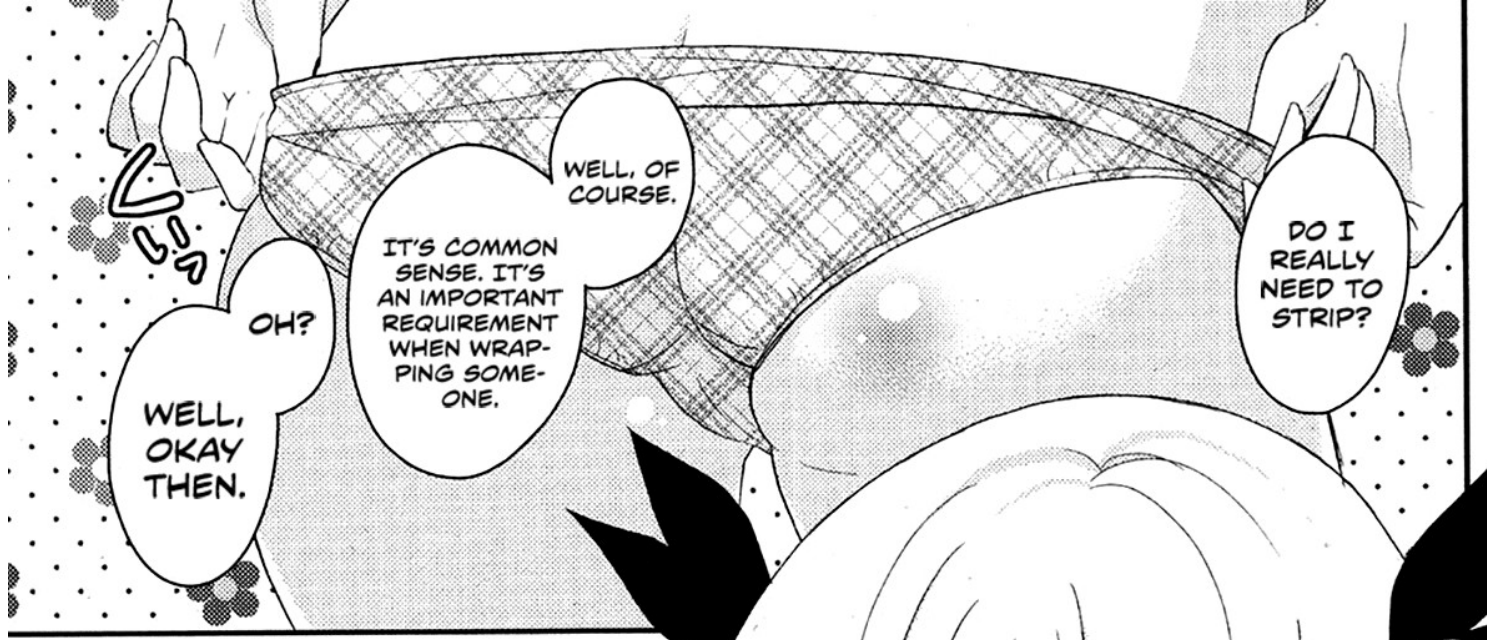


THE PROPER WAY TO WRAP THOSE RIBBONS.

HEY, I'LL TEACH YOU...

I KNOW! IF I COVER THEM UP WITH THOSE RIBBONS...

BUT I'M SORRY, TET-CHAN WON'T BE HAPPY EVEN IF YOU SEE BREASTS THIS SMALL. I'LL COVER THEM UP.



OH?  
WELL, OKAY THEN.

WELL, OF COURSE.  
IT'S COMMON SENSE. IT'S AN IMPORTANT REQUIREMENT WHEN WRAPPING SOMEONE.

DO I REALLY NEED TO STRIP?



I... I'VE CHANGED.

HAVE WE CHANGED SINCE THEN?  
IT WOULD BE GREAT IF WE HADN'T.



Eh he he-  
I HAVEN'T BEEN NAKED IN FRONT OF TET-CHAN SINCE PRIMARY SCHOOL.



OOH, SAYING THAT WHILE LOOKING AT ME THERE... THAT'S MEAN!

BUT YOU'RE JUST LIKE BEFORE.

THERE WAS A TIME WHEN WE TOOK BATHS TOGETHER, WASN'T THERE?

OOH~

TET-CHAN,  
ARE YOU  
LOOKING AT  
MY BOOBS?

WELL, IT  
FEELS LIKE  
SHE DEVEL-  
OPED SOME  
CURVES ALL  
OVER.

YOU'D BE  
FINE IF YOU  
WERE WEAR-  
ING THE  
RIBBONS?

I don't  
get it.

DON'T LOOK  
TOO MUCH,  
OKAY?

IT'S EMBAR-  
RASSING  
WITHOUT THE  
RIBBONS ON.

EARLIER,  
I SAID SHE  
WAS JUST  
LIKE BEFORE,  
BUT...

AAH, I'M NOT  
LOOKING!  
I'M NOT  
LOOKING!

Well I  
really  
am...

THEN IS  
THIS PLACE  
FINE?

DON'T  
TOUCH  
THESE TINY  
BREASTS!

BUT IT'S  
FRUSTRATING  
THAT EVEN  
WITH THIS,  
SHE'S STILL  
NOT CON-  
SCIOUS OF ME.

It tickles  
in a weird  
way, so don't  
tease that  
place!

Ahaha!  
Hehe-  
he!

HYAN!

...THERE,  
IT'S DONE.

フシ...

WELL THEN...  
FOR THE  
FINISHING  
TOUCH...

EEH!

I CAN'T  
MOVE  
LIKE THIS!

THAT'S  
THE MOST  
IMPORTANT  
POINT.

YOU'RE MY  
BIRTHDAY  
PRESENT,  
AREN'T YOU?

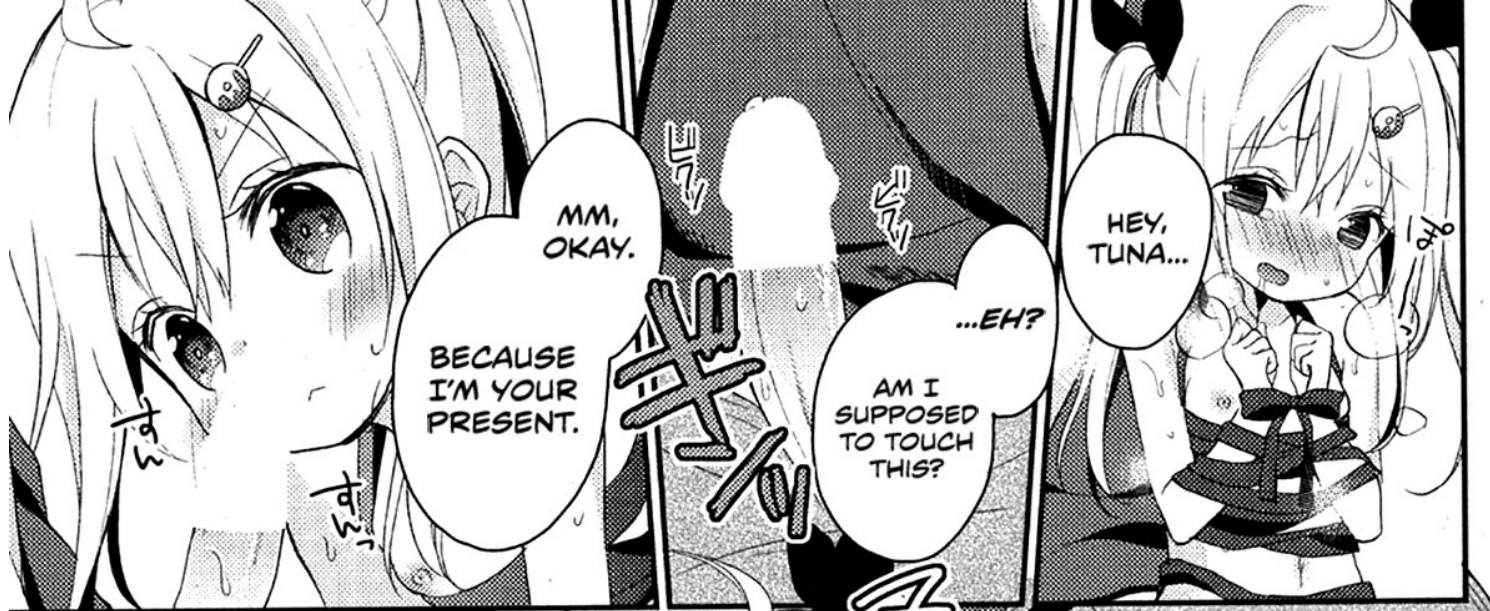
THEN LET  
ME USE YOU  
HOWEVER  
I WANT.

ドキ  
ドキ  
ドキ

ドキ  
ドキ  
ドキ







MM, OKAY.

BECAUSE I'M YOUR PRESENT.

HEY, TUNA...

...EH?

AM I SUPPOSED TO TOUCH THIS?

HEY, HEY, TET-CHAN, COULD IT BE YOU'RE PLANNING ON DOING SOMETHING LEWD?

YOU JUST NOTICED...?

I MEAN, WE'RE ALREADY DOING IT.

OH, I SEE.

I THOUGHT WHAT WE WERE DOING LOOKED LIKE SOMETHING FROM AN LEWD MANGA.

Eh? Eh?

Ah Ah

Ah Ah

It's huge

アッアッ...

Squish

Squish

Nh



Eh he he

YOU KNOW ALL SORTS OF THINGS THAT I DON'T,

AND YOU'RE ALWAYS SAYING STUFF LIKE "GOOD GRIEF" WHEN YOU TEACH ME STUFF.

...I SEE.  
I'M HAPPY.

THE WAY YOU NORMALLY ACT IS TOO DANGEROUS,  
SO I THOUGHT I WOULD DO THIS TO TEACH YOUR BODY A LESSON...

I'm going to undo it, so don't move.

...EH?

TET-CHAN HAS ALWAYS BEEN LIKE A PROFESSOR.



naughty things too.

So, please teach me...

たす

RUB RUB

も

も



INTO THE...  
PUSSY?  
RIGHT?

UM...  
YOUR DICK  
GOES HERE...

There,  
Tet-chan,  
Please  
enjoy the  
meal.

...AH,  
TET-CHAN,  
HAVING ME FOR  
A MEAL MEANS...  
DOING THIS KIND  
OF THING?



Ah...  
Aah...!

y-yaay...!  
Tet-chan  
praised  
me! I'm...  
glad...!



MM,  
THAT'S  
RIGHT.  
YOU'RE  
PRETTY  
SMART FOR  
A TUNA.



Does Tuna's pussy feel good?

Tet-chan, are you feeling good?

Aha... It's so weird...

The place where we're connected is making squishy noises.

Aah...

Yay... I'm happy...!

That's because it's the nickname that Tet-chan gave me.

It made me happy... I was actually happy that you called me Tuna.

YOU... YOU JUST CALLED YOURSELF TUNA.

Guide







Large, stylized, jagged sound effects or text elements, possibly representing a shout or a powerful action, located in the upper right quadrant of the page.

Small sound effect or text element located near the character's mouth.

Small sound effect or text element located near the character's hair.

Small sound effect or text element located near the character's head.

Small sound effect or text element located near the character's hair.

Small sound effect or text element located near the character's mouth.

Small sound effect or text element located near the character's mouth.

Small sound effect or text element located near the character's mouth.

Small sound effect or text element located near the character's hair.

Small sound effect or text element located near the character's mouth.

Aha...  
Tet-  
chan...

It's  
leaking  
out.

Small sound effect or text element located near the character's mouth.

Small sound effect or text element located near the character's mouth.

Small sound effect or text element located near the character's mouth.

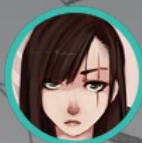
Small sound effect or text element located near the character's mouth.



✧ TSUNA-KAN / END

“Tuna Can” by Yuizaki Kazuya  
[ユイザキカズヤ] つなかん

Release No. 0094



**Tech**

How to train your loli.

Team twitter ; @PhoenixSyndi

*Glorious Leader / Project Supervisor*

**Maya K.**

My gacha luck always makes me cry. ;\_;

*Translator*



**Manchewable**

Happy Birthday Tet-chan.

*Editor*

**Wayne**

You can tune a guitar but you can't tuna fish, etc.

*Quality Check*



**Inkblot**

It's a beautiful day to fuck a gift-wrapped loli.

*Quality Check*

