

破壊系

女子



RHまいなす

#1 異物挿入娘



I HAVE
A SECRET
THAT I
CAN'T
TELL
ANYONE

HELLO
EVERYONE!
I'M
SHIGEKITA
RIN, A
[REDACTED]
YEAR-OLD
HIGH SCHOOL
STUDENT!



I LOVE
TO STICK
THINGS
INSIDE
MY
PUSSY!

AND
THAT
IS
...

びくびく

ゴクゴク

ゴクッ

EVER SINCE THEN, WHENEVER I SEE SOME OBJECT, I WOULD GET THE URGE TO PUT IT IN



I WOULD TRY TO STICK LITTLE PEBBLES IN THERE WHILE PLAYING IN THE SANDPIT



I REMEMBER BACK WHEN I WAS IN ...



IT'S BECOME LIKE THIS !

AND NOW ...

はいってる...

I'M HOME! I LANDED SOME BIG CATCHES TODAY!



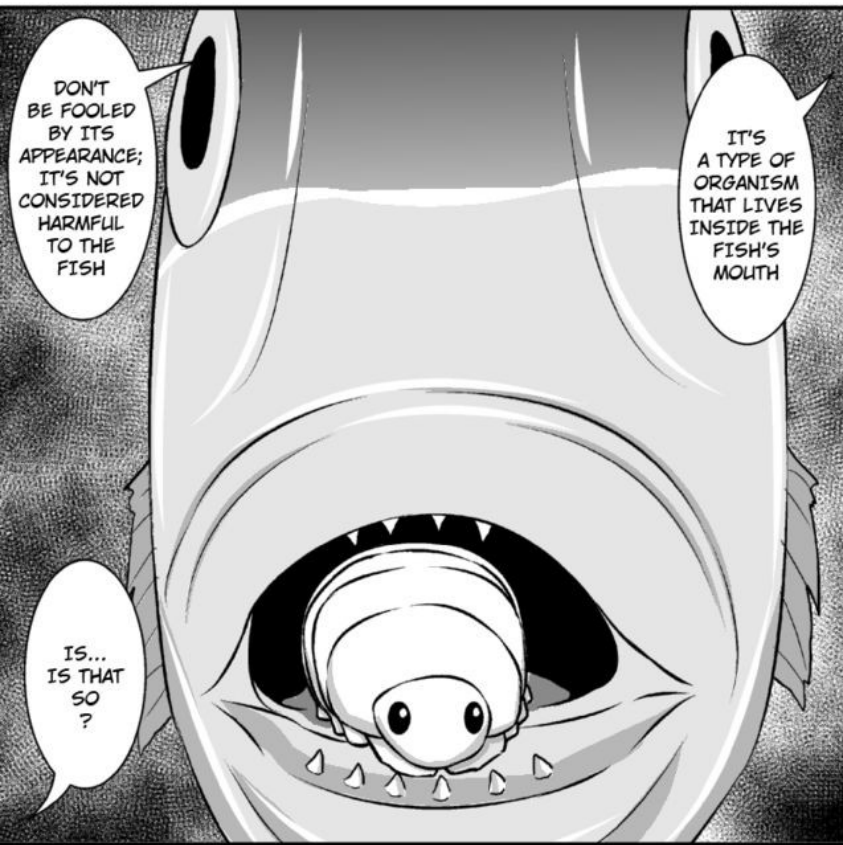
MY FATHER LIKES TO FISH, AND THIS HAPPENED AFTER ONE OF HIS FISHING TRIPS

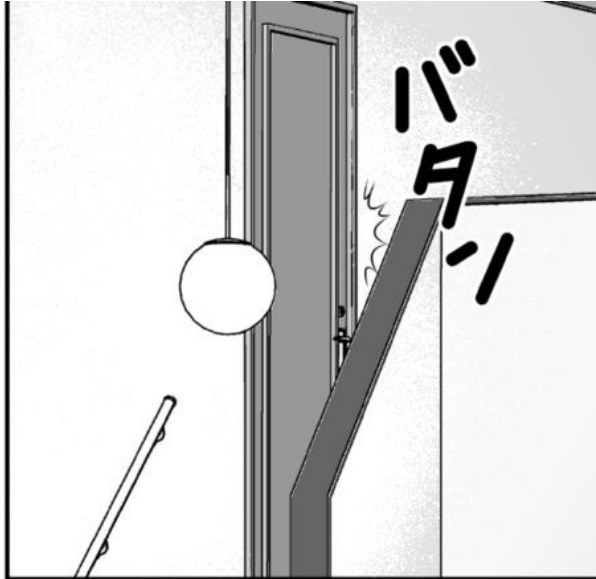
BUT TODAY I'D LIKE TO TELL YOU ABOUT MY MOST MEMORABLE EXPERIENCE



TO THIS DATE I'VE EXPERIMENTED WITH COUNTLESS THINGS ...

はいってるうう





IF I PUT IT INSIDE ?

SO... THIS THING THRIVES INSIDE THE MOUTH OF A FISH, HUH? WHAT WOULD IT BE LIKE ...



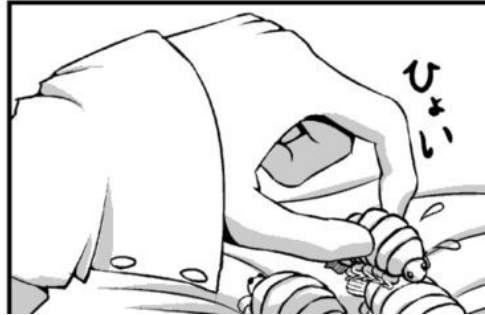
I CAUGHT IT!
THREE OF THEM!

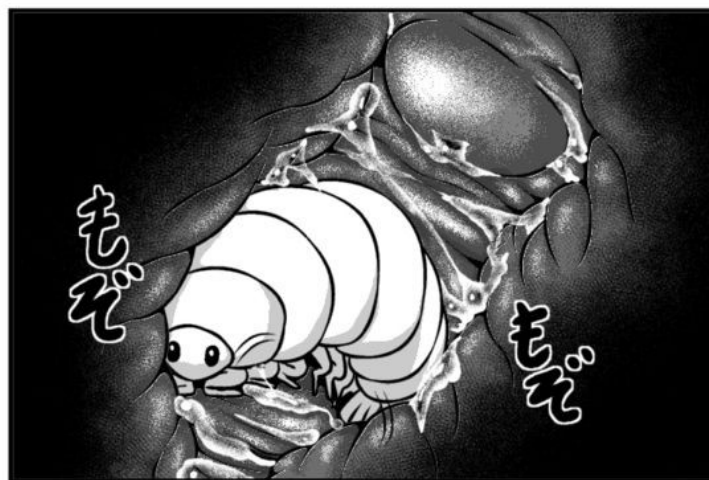
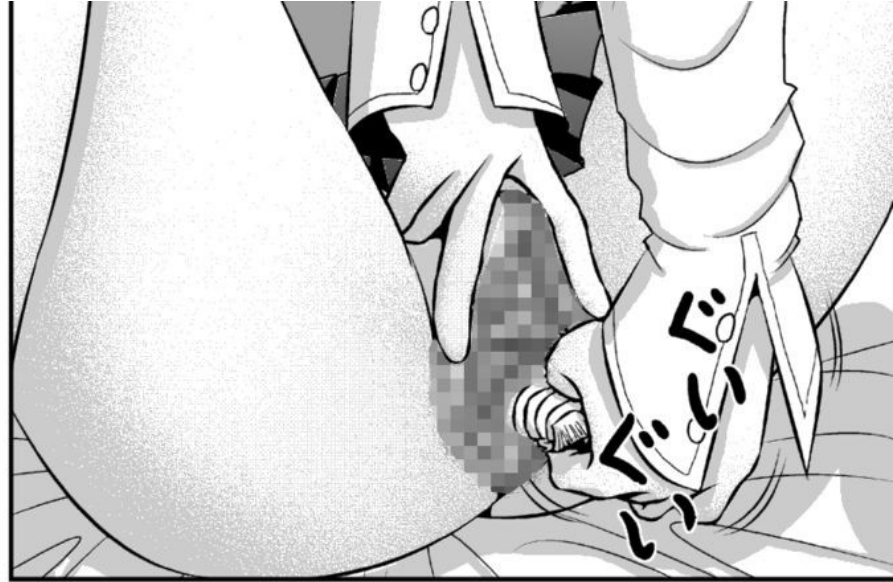
I ...



I'M SORRY ...

LITTLE TONGUE-EATING LOUSE ♡







IT STARTED SUCKING ...

IT ...



HEEY! RIN! YOU INSIDE?



COME HELP ME SORT OUT THOSE FISH

ガチャッ

AH, SO YOU'RE HERE AFTER ALL... WHAT'S WRONG? WHY'D YOU RUN OFF SO SUDDENLY?



I... I'M FINE! I'LL FEEL BETTER IF I JUST REST FOR A BIT!

NEED SOME MEDICINE?

I... IS THAT SO?



HEY, IS SOMETHING THE MATTER? ARE YOU NOT FEELING WELL?

AH... MM, I THINK I MAY BE COMING DOWN WITH A FEVER...



ALRIGHT, IF YOU NEED ANYTHING, JUST COME FIND ME

MM, THANKS, DAD



IT WAS HURTING BEFORE, BUT I DON'T FEEL ANYTHING NOW...

...EH? AFTER ALL THAT ...

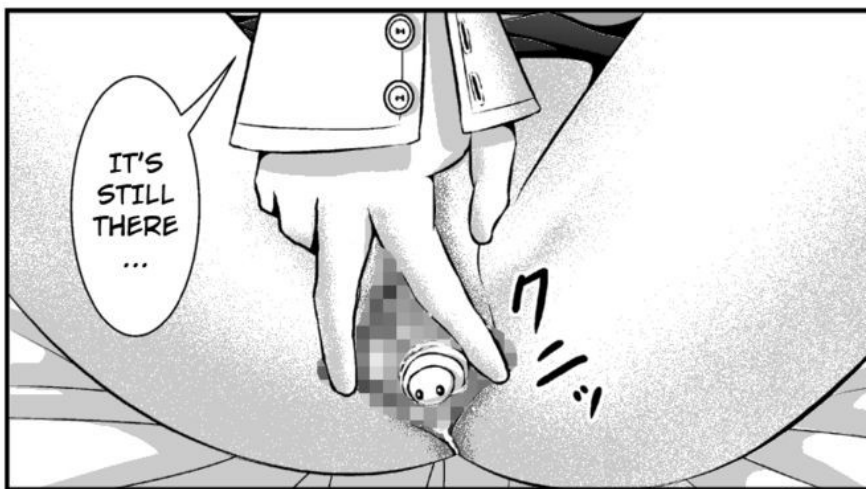


I'M SORRY, DAD ...

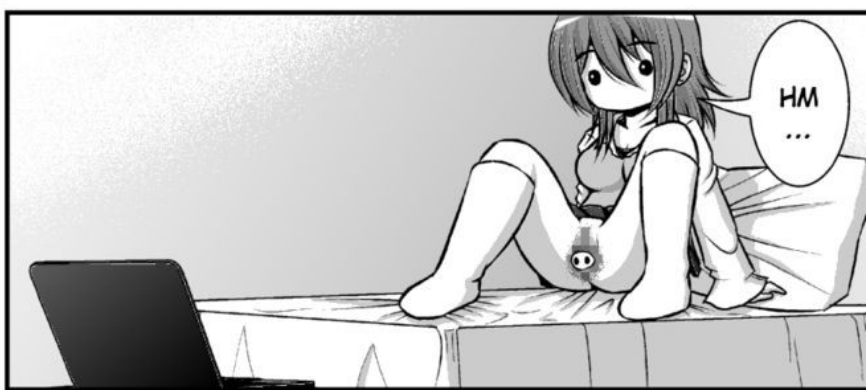
PHEW ... THAT WAS CLOSE



GUESS I'LL DO SOME RESEARCH ON THIS LITTLE THING ...



IT'S STILL THERE ...



HM ...

ウオノエ科

ウオノエ(魚の餌、学名cymothoa)は、甲殻綱 等脚目 アジ、タイ、サヨリなどの魚の口内やえら、体表面にへ 宿主の魚が死ぬと離れるため、釣った魚をいれておし 日本におけるウオノエの研究はあまり進んでおらず、種類や宿主

IT ATTACHES ITSELF INSIDE THE MOUTH OR ON THE SURFACE OF VARIOUS SPECIES OF FISH, AND FEEDS OFF OF IT

THE TONGUE-EATING LOUSE IS A TYPE OF A PARASITIC CRUSTACEAN



IT'S
OFFFF!
THE
LOUSE
CAME
OFFFFF
!!

ぽんぽん

IT
TOOK
THE
DES-
TROYED
PART
ALONG
WITH
IT!!

ポタッ

ポタッ
ひい



HAH !!



ONE OF THEM IS GOING INTO MY WOMB!



SINCE IT'S COME TO THIS...



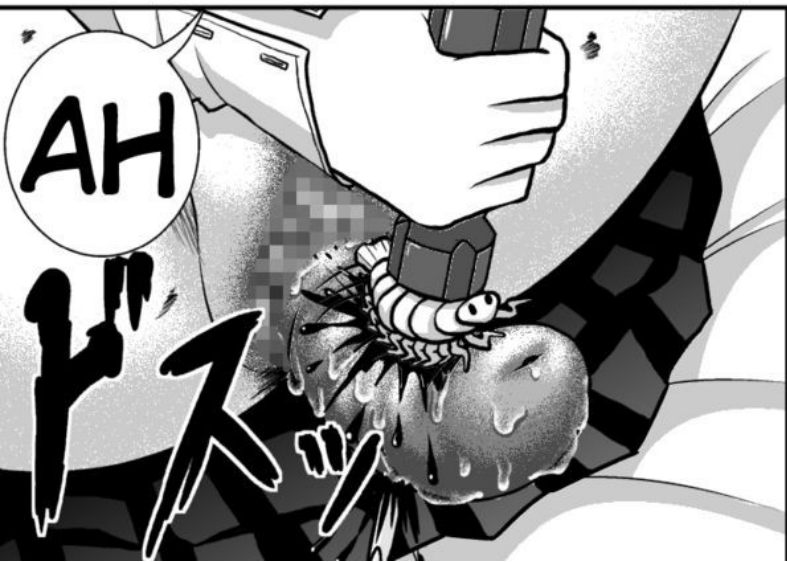
NO... DON'T !!



I HAVE TO KILL IT...!

I FEEL A LITTLE BAD FOR IT, BUT...

IF THIS GOES ON, I MIGHT BECOME INFERTILE!!



AH



...IT... IT ALSO TOUCHED ...

HYA! HYAH!



THE SCREW-DRIVER IS PIERCING STRAIGHT THROUGH MY WOOMB !!

EEEEEEE HYAAAHH! I STABBED SO HARD IT WENT STRAIGHT THROUGH MY WOOMB!!



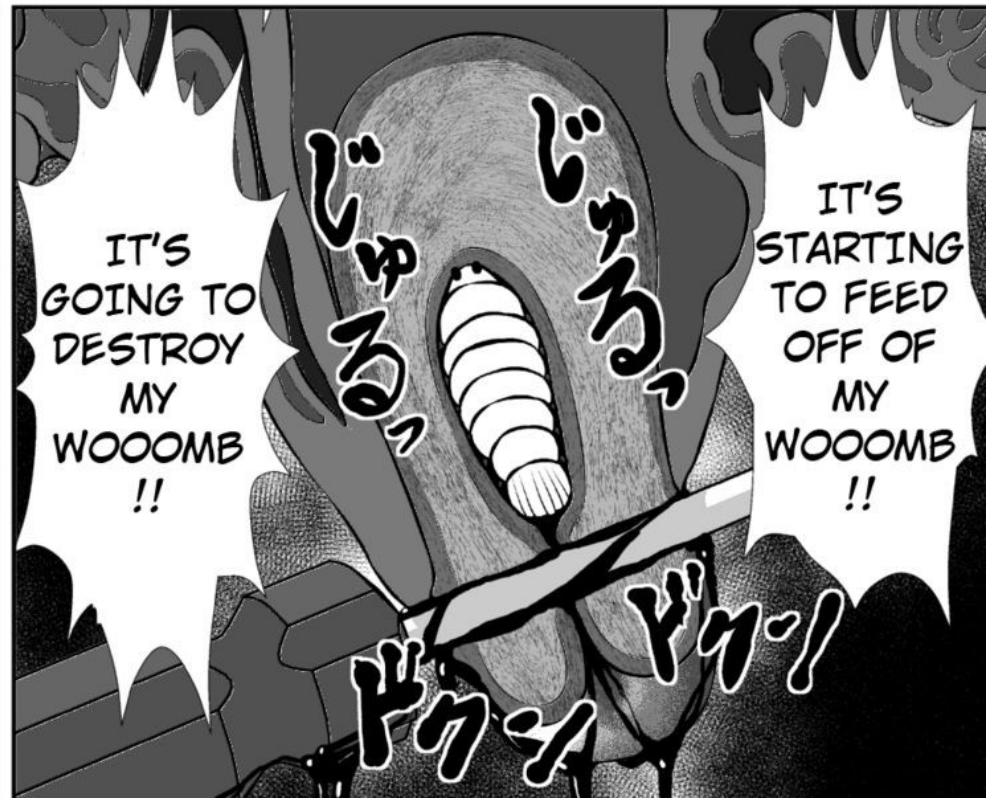
IT'S INSIDE MY WOMB !!

LLLLLL WOOOO AAAAAA HHHHHH



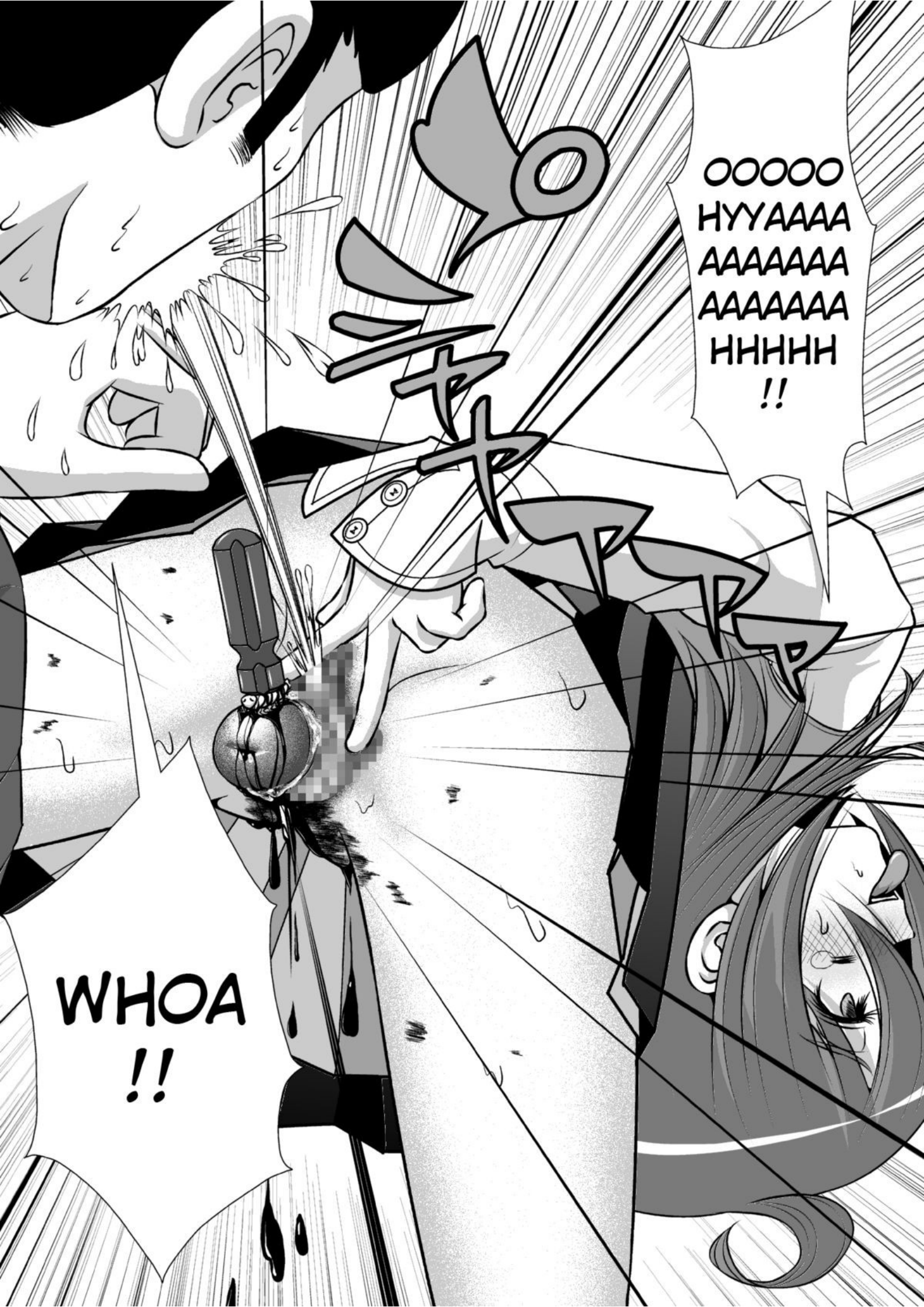
WHAT'S WITH ALL THE NOI--

HEY, WHAT'S WRONG, RIN?



IT'S GOING TO DESTROY MY WOOMB !!

IT'S STARTING TO FEED OFF OF MY WOOMB !!



OOOOO
HYYAAAA
AAAAAAA
AAAAAAA
HHHHH
!!

WHOA
!!



IT'S A MIRACLE THAT THERE WERE NO LASTING EFFECTS, AND I RECOVERED COMPLETELY IN A MONTH'S TIME

NO NEED TO USE AN ANAESTHETIC ...

I WAS IMMEDIATELY SENT TO THE HOSPITAL FOR SURGERY

EH?



ピーポー
ピーポー

TWO MONTHS LATER...



AAH, THOSE ARE MANTIS SHRIMP

WHAT'S THIS SHRIMP-LIKE THING?

HM? DAD,

WE CAN MAKE SUSHI OUT OF THEM. HAVEN'T YOU SEEN THEM BEFORE?



YOU CAUGHT A LOT AGAIN TODAY!

WELCOME HOME!



I'M BACK!



ゴ
ン
ゾ
ー

EH?

ALRIGHT, RIN, HELP ME SORT OUT THESE CATCHES ...



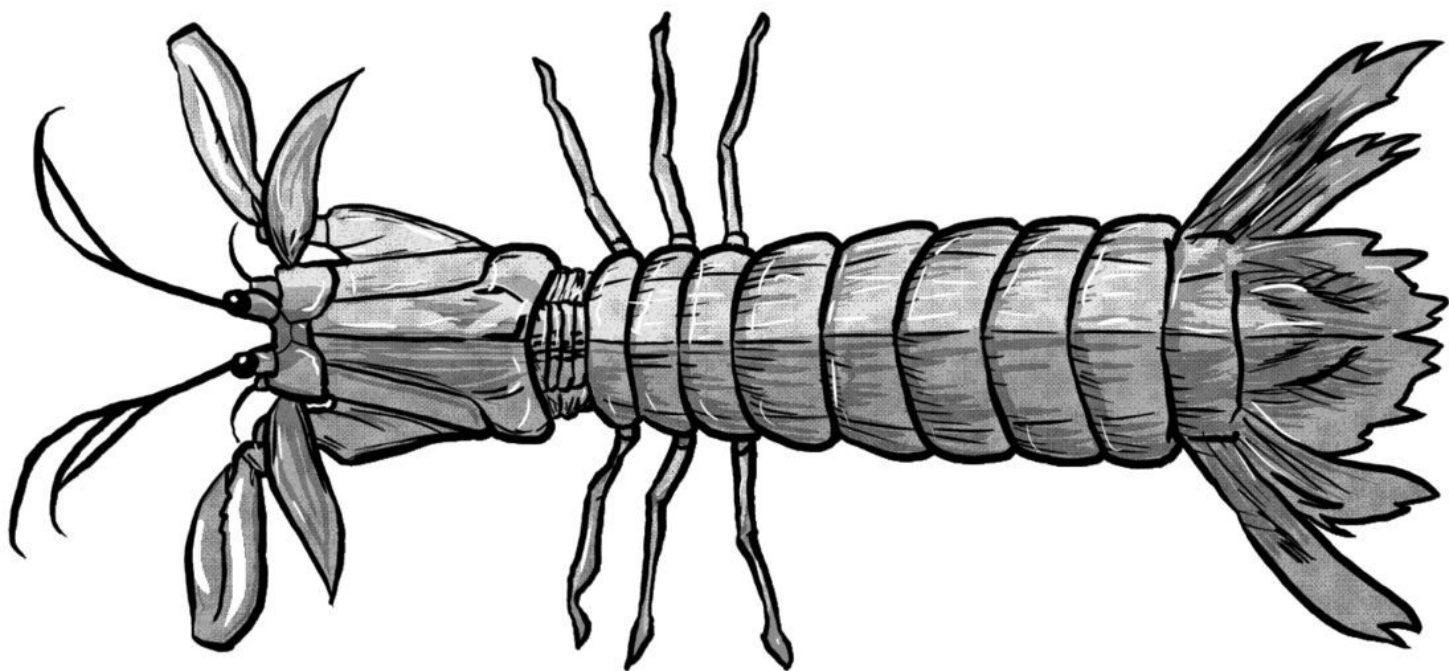
HUH ...

SO THESE ARE MANTIS SHRIMP ...



H, HEY
RIN...!
WHAT'S
WRONG
!?

EEEEEE
YYAAAAA
AAAAA
HHHHHH
HHHHHH
HHHH!!



MANTIS SHRIMP (STOMATOPOD)

A TYPE OF MARINE CRUSTACEAN, WITH A SIMILAR APPEARANCE TO THAT OF OTHER CRUSTACEANS.

IT IS KNOWN TO BE VERY POWERFUL, AND IN SOME CASES HAVE BEEN ABLE TO BREAK THROUGH AQUARIUMS.

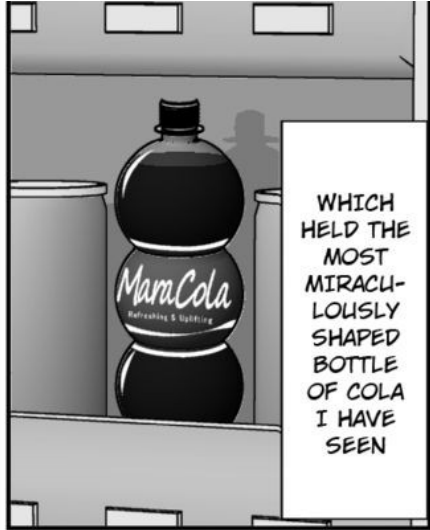
#2 炭酸飲料in痴漢電車



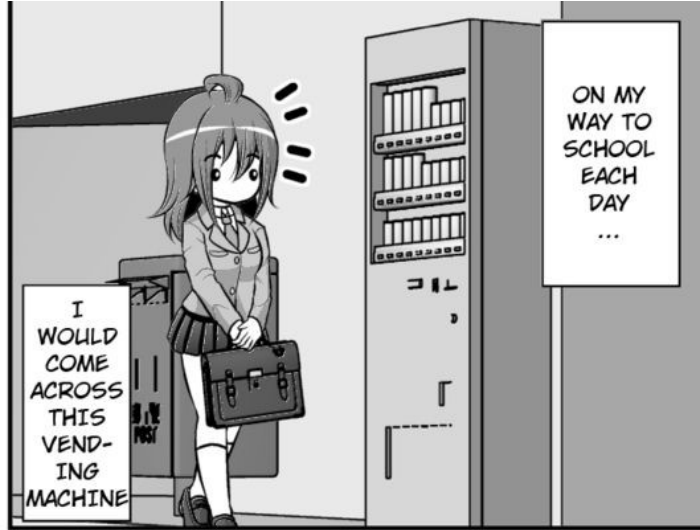


SO ONE DAY, I DECIDED ...

ガッーゴトー



WHICH HELD THE MOST MIRACULOUSLY SHAPED BOTTLE OF COLA I HAVE SEEN



ON MY WAY TO SCHOOL EACH DAY ...

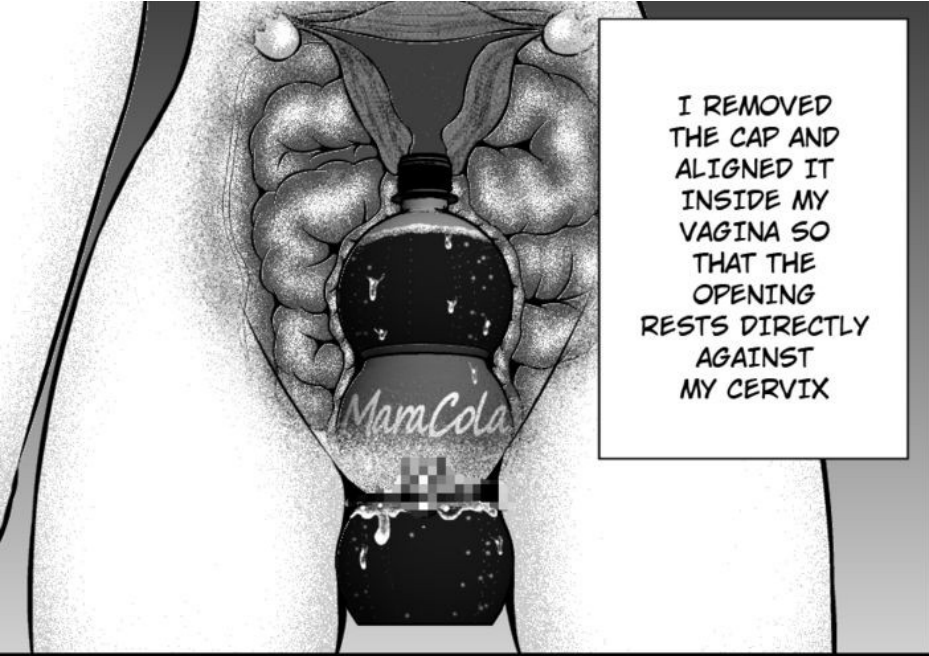
I WOULD COME ACROSS THIS VENDING MACHINE



TO GO TO SCHOOL WITH THAT BOTTLE INSIDE OF ME

ゴトー

ガッー



I REMOVED THE CAP AND ALIGNED IT INSIDE MY VAGINA SO THAT THE OPENING RESTS DIRECTLY AGAINST MY CERVIX



THE SENSATION IS AMAZING !

IT FEELS VERY NICE, JUST LIKE HOW I IMAGINED IT WOULD ♡



AND SINCE IT'S CARBONATED ...

A TINY SHAKE OR CHANGE IN BODY TEMPERATURE WILL CAUSE THE BUBBLES TO FORM AND PUSH AGAINST MY WOMB ...



BECAUSE I'M NOT WEARING ANY PANTIES ...

I'M RELYING ON JUST MY VAGINA AND CERVIX TO HOLD IT IN!



IT WOULD BE WAY TOO EMBARRASSING!

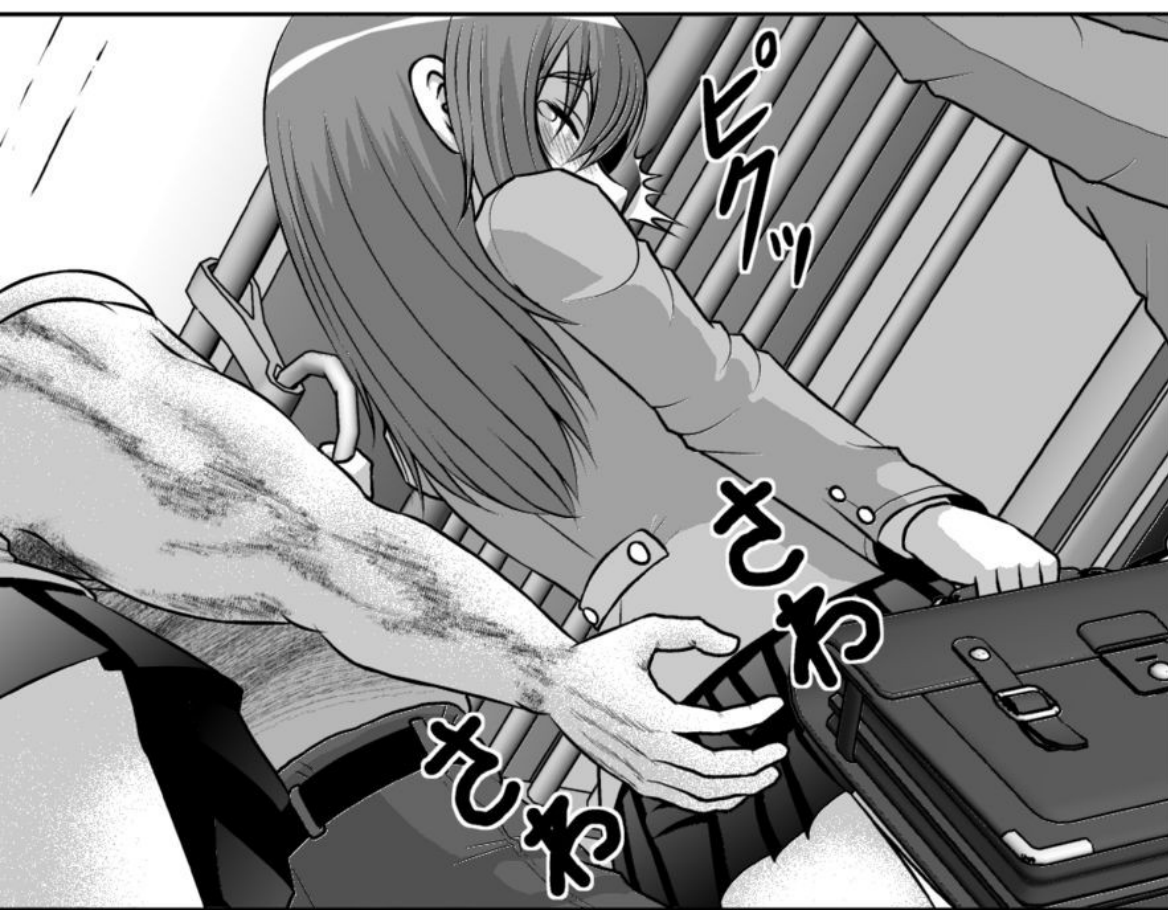
N...NO...! IF THE BOTTLE FALLS OUT AT A PLACE LIKE THIS...

I NEED TO HOLD IT IN NO MATTER WHAT!



OOH... THE PRESSURE IS STRONGER THAN I IMAGINED!

THE BOTTLE MIGHT FALL OUT AT THIS RATE!



...HUH?

TL NOTE: CHIKAN = TRAIN MOLESTER



NO... YOU CAN'T~! DON'T PLAY WITH THE BOTTLE~!

IT'S GOING TO COME OUT~!!



NO... DON'T TELL ME...

A CHIKAN AT A TIME LIKE THIS...?



DON'T ...

ST...
STOP
IT...



AH ...

.....



HAH
!!

WHAA
!?

BUT MY
STOMACH
...

IS
ABOUT
TO
BURST
!!

グ
グ
グ

ジュ
ジュ
ジュ
ジュ
ジュ

MaraCo

ジュ
ジュ
ジュ
ジュ
ジュ

ジュ
ジュ
ジュ
ジュ
ジュ

ジュ
ジュ
ジュ
ジュ
ジュ

ジュ
ジュ
ジュ
ジュ
ジュ

NO...!
I CAN'T
MAKE WEIRD
SOUNDS
RIGHT NOW!





WAIT...
WHAT!?

WHAT
IS THIS
!?

ガッ

ガッ

ピッ
チッ

ピッ
チッ

ピッ
チッ

ピッ
チッ

ピッ
チッ

ピッ
チッ

ピッ
チッ

ピッ
チッ

ピッ
チッ

ピッ
チッ

ピッ
チッ

ピッ
チッ

ピッ
チッ

ピッ
チッ

ピッ
チッ

ピッ
チッ

ピッ
チッ

ピッ
チッ

ピッ
チッ

ピッ
チッ

ピッ
チッ

ピッ
チッ

ピッ
チッ

ピッ
チッ

ニヤリ

!!





IT ...

♪

IT'S GOING TO BREAK ~!!

クワッ

カッ

カッ



YOU THERE...
WHAT DO YOU THINK YOU'RE DOING?



HM?

N...
NO...

I'M...
ALREADY
...



AT
MY
LIMIT
!!



SHIGE-KITA!!

ム
チヤッ



ビーン
ッ



ハア
ハア

N...NO!
AMBULANCE!
SOMEONE
CALL AN
AMBULANCE!!

CA...
CALL
THE
POLICE
!!



THE CHIKAN
WAS ARRES-
TED FOR
VIOLENT
BEHAVIOR
INSTEAD OF
MOLES-
TATION

AFTER THAT,
I WAS SENT
TO THE
HOSPITAL
AGAIN