



HMMM

TANI-GUCHI-KUN, DO YOU MIND IF WE ASK YOU FOR HELP?

HE MAY BE A HELPFUL GUY, BUT LET'S NOT...

WE BETTER NOT. THE TWO OF US SHOULD BE ABLE TO HANDLE IT.

BUT IT'S HARD WORK! LET'S ASK HIM!



IT'S O.K. BESIDES, SOME BOOKS ARE QUITE HEAVY.

WE DO BETTER NOT ASK HIM... LET'S DO IT OURSELVES.

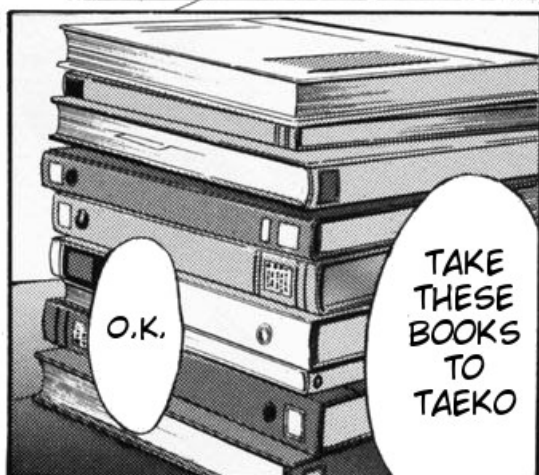
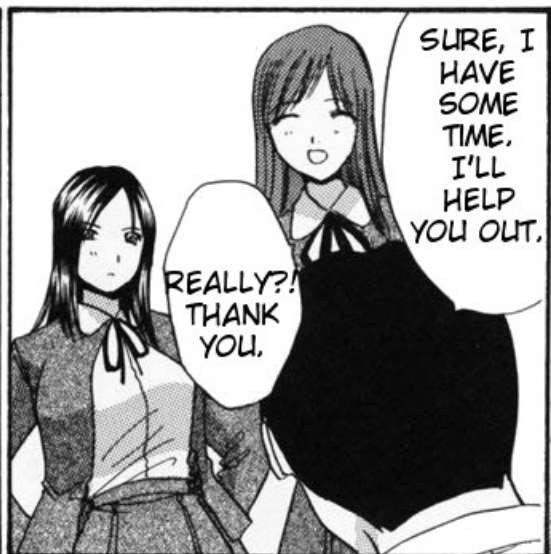


DO YOU WANT ME TO HELP YOU TO SHELVES THOSE BOOKS NOW?



ONLY NISHINO-SAN AND SHIKAWA-SAN ARE LEFT IN HERE?

ALL THE LIBRARIANS ARE GONE HOME. WE COULD ONLY FIND YOU FOR HELP, TANIGUCHI





NISHINO-SAN
WHERE
DO THESE
BOOKS
GO?

JUST
PUT
THEM
OVER
THERE



I...
I'M
SORRY!



HAND
ME
OVER
THAT
DICTIO-
NARY

AH...

WHAT
ARE
YOU
DOING!?

YOU
ARE
SUCH A
CLUTZ!





LET ME HELP YOU! THOSE BOOKS ARE HEAVY...

IT'S ENOUGH WITH ME. I CAN HANDLE IT ALONE



B... BUT...



DID YOU COME TO HELP US JUST BECAUSE YUMI ASKED YOU?... YUMI HAS LEFT NOW. YOU NO LONGER HAVE A REASON TO STAY



I'VE LOVED YOU FOR SO LONG, NISHINO-SAN

EH!



HM...

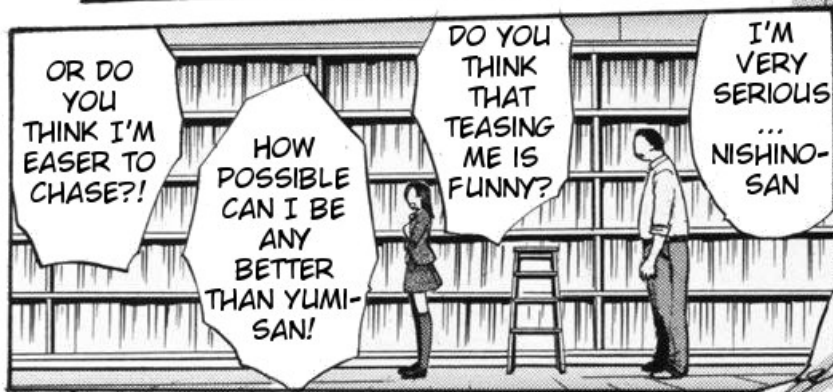
GIVE THEM TO ME. IT'S MY JOB ANYWAY



EITHER YOU ARE A KIND PERSON OR YOU HAVE OTHER REASONS...



IT'S BECAUSE ...



あああ

YI...
YA...

TANI-
GLUCHI...
YOU'R...
GOING...
WAY...
OVER

YAAAA!!!

GET...
OFF...
ME... I...
BEG...
YOU...
TANIGLI-
CHI.

あ

AH...
SO...
SOFT...

YOU...
IDIOT!
TANIGLI-
CHI...





ARE YOU LISTENING TO ME?!

YOU... PERVERT ... STOP...!

S... STOP NOW! DO YOU THINK YOU CAN DO THIS AWFUL THING?

NISHINO-SAN'S... BOOBS

BUT... YOUR BOOBS LOOK SO PRETTY

YOUR NIPPLES ARE GETTING HARD...

PLEASE... STOP...

WHY DO I HAVE TO GET MY NIPPLES SUCKED BY A GUY LIKE TANIGUCHI...

オオオオオ

オオオオオ

オオオオオ

オオオオオ

オオオ

オオオ

オオオ

オオオ

オオオ



WHY IS HE
LICKING MY
SO
VORACIOUS-
LY?!

HIS
TONGUE
IS LICKING
EVERY
PART OF
MY BODY
WET!

I CAN'T
SEE ALL
OF IT

TAKE
YOUR
HANDS
OFF. I
CAN'T
SEE IT

HERE

NO!
STOP!
DON'T
DO THAT!

HEY,
HOLD
ON!



NISHI-
NO-
SAN!



I MUST
LOOK SO
ACKWARD
RIGHT
NOW.
OOOHHH...

I CAN'T
TAKE IT
ANYMORE!
MY BODY
FEELS SO
WEIRD

ひやあ



WHAT THE
HELL! DID
YOU EVEN
PLAN TO
FUCK ME?!

NO WAY!
THAT THING
IS TOO BIG...
IT WON'T FIT
INTO MY
PUSSY



あ
あ

AGH... THIS IS MY FIRST TIME!

NO! DON'T PUT IT IN!

MY PUSSY IS GONNA BE TORN APART!

I'M STILL A VIRGIN! AGHHH...

AH...! I'M FINALLY INSIDE NISHINO-SAN

WU... EH, EH, EH, EH, EH

OOO! AH, AH AH, AH AH, AH

ず
ず
ず
ず

あ
あ
あ
あ

SO BIG
...
SO
HARD

IS
ROCKING
HARD MY
POOR
LITTLE
PUSSY

TANI-
GUCHI'S
BIG,
FAT
COCK

WHY DID
I ALLOW
TANIGUCHI
TO TAKE MY
VIRGINITY?

IT'S
HITTING
MY
WOMB

NISHI-
NO-SAN,
HOW
DOES
MY COCK
FEEL
LIKE?

IT'S
RUBBING
MY
PUSSY'S
WALLS

HM?



I CAN CLEARLY SEE YOUR BUTT-HOLE

NO... DON'T LOOK

I'M ABOUT TO CUM...

CAN I CUM INSIDE?

WHAT?!

AHHH

I CAN'T HOLD ANY-MORE

SPERM'S COMING OUT!

MY FIRST TIME... I'M GON-NA BE INSE-MINATED

だめっ



WHY DID
I GOT
RAPED BY
TANIGUCHI'S
COCK AND
WITH SO
MUCH
CUM?

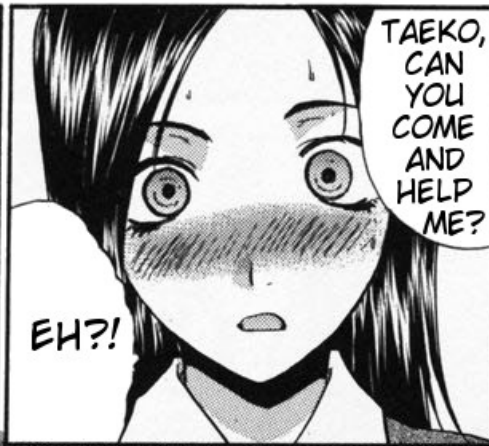
AHAA...
SPERM'S
POURING
INTO MY
WOMB...

SO MUCH
SEMEN...
MY WOMB
IS ALL
FILLED
UP

HA...
TAKE IT
OUT
ALREA-
DY!

O.K.









THIS...

SO, WHAT DO YOU WANT TO GIVE ME A GIFT?



I GOT IT BY MAIL.

HOW THE HELL DID YOU GET A HOLD OF THIS THING?!



WHAT?! THIS... IS... A PERVY THING



WHAT?
...
DO YOU THINK I'M A WHORE?!



AND YOU WANT ME TO USE THIS?

はあ

はっ

はあ

HSH

WHAT IN HELL WAS THAT IDIOT THINKING?

嫌い好き

[その②]

玉玉玉玉



IF IT IS NOT ON, I CAN THINK OF IT AS IF IT WERE A TAMPON. IT'LL BE FINE







S... SURE

PLEASE EXPLAIN HOW YOU SOLVE THE PROBLEM

は
っ

は
っ



TTTO



は
っ



ON

YI... UGH...



HERE... I USE THE FORMULA... AND... PLUG IT IN

THEN... THE ANSWER IS... THE SQUARE OF THE RESULT...



N... NO, I'M FINE

UH? DON'T YOU FEEL WELL?



MAX!





I CAN'T TAKE IT ANY-MORE

I DON'T BELIVE IT... IS THIS THING REALLY THAT AROU-SING?

THAT'S ENOUGH

TANI-GUCHI!

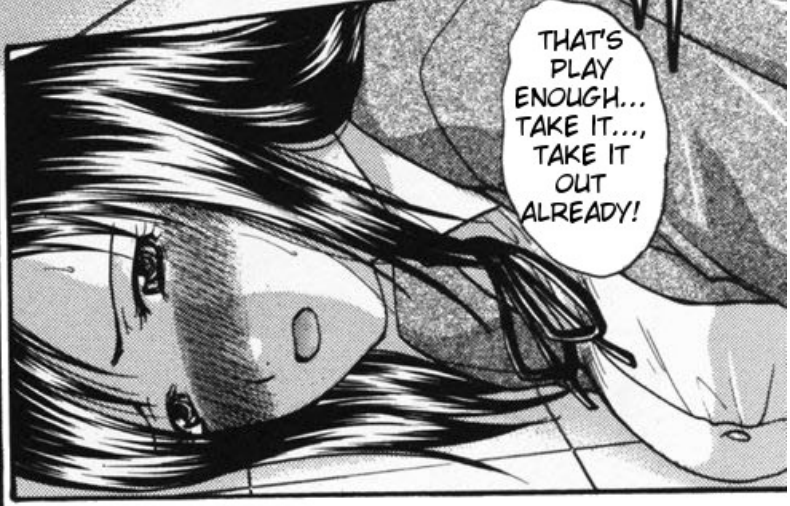


I... I...

BUT YOU SAID YOU WANTED TO TRY IT

はっ

TAKE IT OUT! QUICK!



THAT'S PLAY ENOUGH... TAKE IT... TAKE IT OUT ALREADY!



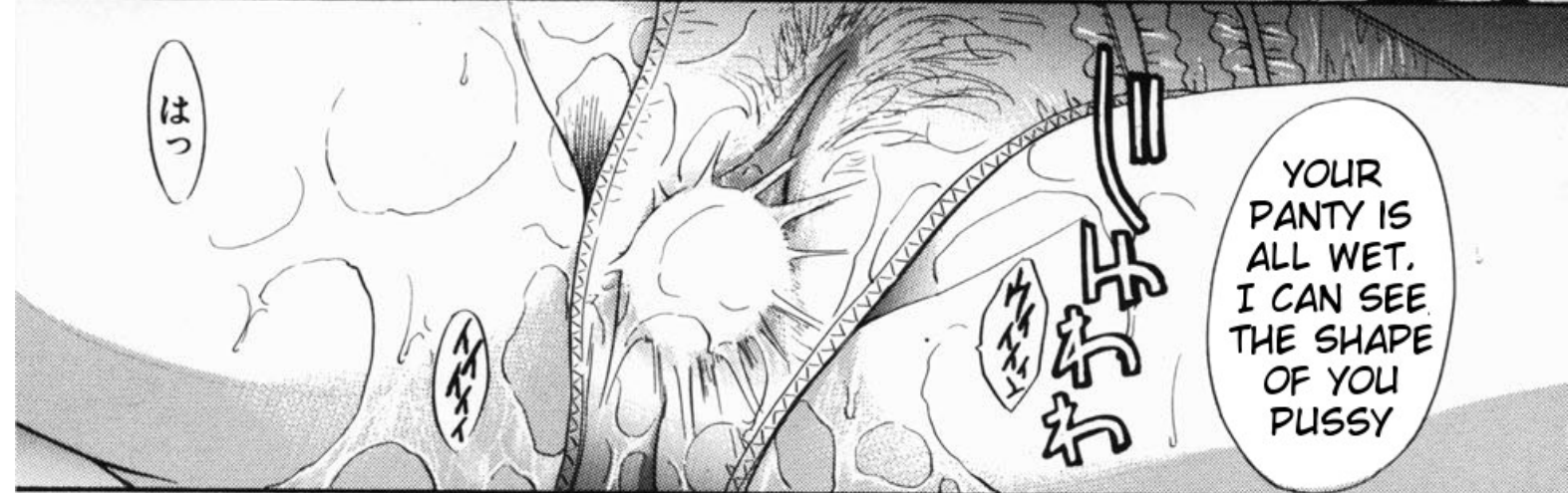
I'M MELTING. I CAN'T EVEN STAND ANY-MORE

I'M GONNA TURN IT ON!

STU-PID!



PLEASE ...



YOUR PANTY IS ALL WET. I CAN SEE THE SHAPE OF YOU PUSSY



UH...
EH...



IT'S ALL YOUR FAULT. TAKE IT OUT NOW!



LOOK YOUR PANTY IS DRIPPING WET

YOU DON'T NEED TO SHOW ME THAT



OPEN YOUR LEGS NISHI-NO-SAN

UH ...



I'M PUTTING YOU INTO THE RIGHT POSTURE TO GET IT OUT EASILY

WHAT ARE YOU DOING?!

ん

ん...
ん...

WHERE DID THE THING GO?

HOLD STILL AND LET ME SEE. I'M TAKING IT OUT

ぽんぽん

EVEN THE REMOTE'S ANTENNA IS DEEP INSIDE

EH?... IT MUST HAVE GONE DEEPER INSIDE...

WHY DO YOU KEEP DIGGING SO FORCEFULLY?

BECAUSE I CAN'T REACH IT AT ALL

LISTEN TO ME!

STUPID TANI-GUCHI! WHY ARE YOU MAKING ME TO HOLD SUCH EMBARRASING POSTURE?



AHH
!!!

WHERE
IS IT?

IS IT
DEEP-
ER?

YOU'RE
TOO LOUD!
YOU'RE GONNA
ATTRACT
SOMEONE'S
ATTENTION

WHY
DON'T YOU
SUCK IT
SO YOU
CAN'T
SHOUT
ANYMORE

B...
BUT

I
HAVE
AN
IDEA
...

0333-0



GOOD



EH EH
EH EH

AH



TANI-
GUCHI
...
YOU
CAN'T
DO
THAT!

EH?

WHAT
THE
FUCK!
YOU'RE
GONNA
PUT IT
INSIDE
ME!

THAT
THING
IS STILL
INSIDE!

TANI-
GUCHI
YOU CAN'T
PUT IT
INSIDE!
IT'S
CRAZY!

はっ



あぁッ

YI..
YA..

MY BELLY IS GONNA EXPLODE!!!

IT'S GOING ALL THE WAY IN!



NO!
... DON'T DO IT!

I WONDER WHAT WOULD HAPPEN IF I TURN THE SWITCH ON NOW...

NO!

IF YOU DO THAT I'LL DIE!!



AHHHH!
I CAN'T TAKE IT!

IT FEELS SO WEIRD!!



UUH...
IT'S VIBRATING
...
DEEP...
DEEP...
IN MY WOMB

I'M FEELING
IT TOO!...
AT THE TIP OF
MY
COCK

I FEEL
THE VIBRA-
TIONS
THROUGH
ALL MY
BODY!

はっ

はっ

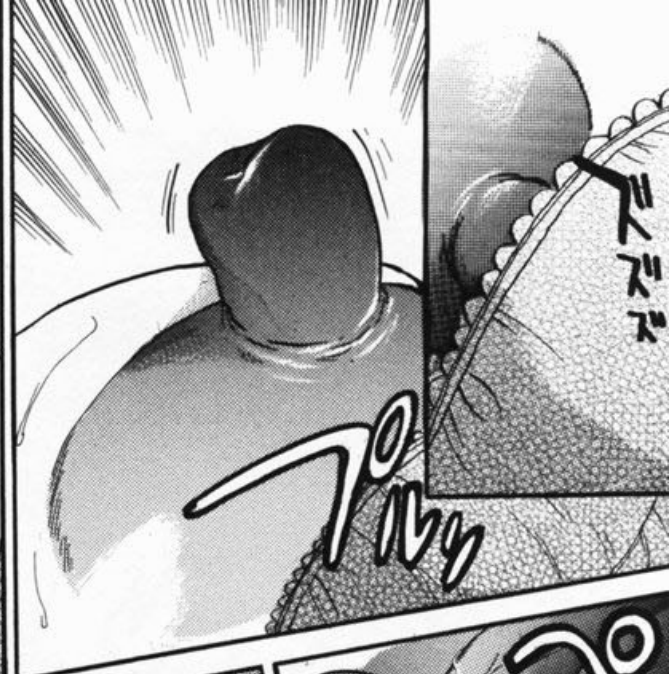
はっ

はっ

はっ

はっ

はっ



YOUR NIPPLES ARE STICKING OUT!
AND THEY ARE SO STIFF!



AAAAA!!!
AHHHH...



NISHINO-SAN... ARE YOU ALRIGHT?

DO I LOOK ALRIGHT TO YOU...?

I'M GONNA EXPLODE... I'M CUMMING!... I... CAN'T HOLD IT!

んんっ

ん...

はっ

あっ

あっ

あっ

あっ

あっ

あっ

あっ

あっ

あっ

あっ



P...PEE
I'M
GOING
TO PEE
AAAHH..

TANI-
GUCHI,
YOU
IDIOT!!

AGH...
I'M
ABOUT
TO CLIM!

I'M...
CLUM-
MING!

CUMMING

イウウ

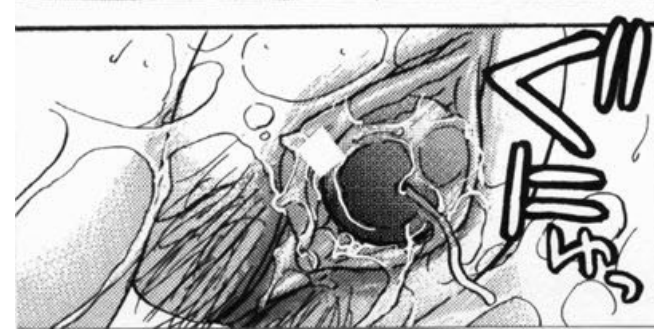
イウウ

イウウ

ゲッ

ゲッ

ゲッ





AHH...
THE
TOY
...

...
CAME
OUT
...

NICE!



STAND
STILL
...



YOU'LL
PAY
FOR
THIS!

I'M
SORRY!



WHAT
DO
YOU
MEAN
BY
"NICE"
?!

N...
NO-
THING
...



HMM?



AAHHH ...



TANI-GUCHI, WHAT'D HAPPEN IF SOMEBODY COMES TO THIS PLACE?

DON'T WORRY. NOBODY'S GONNA COME HERE



YOUR MOUTH IS SO WARM, NISHINO-SAN



あ...外に人がいっぱい...

AH AH

I'M GETTING EXCITED JUST BY THINKING ABOUT IT



NOBODY THINKS THAT NISHINO-SAN WOULD DO SUCH A LEWD THING

TANI-
GUCHI-
KUN
~~~

WU..  
AH..

TANI-  
GUCHI,  
YOU  
IDIOT

ISHI-  
KAWA-  
SAN!

IS  
TAEKO-  
CHAN  
OVER  
THE-  
RE?

AH  
...  
YES!

WHAT'S  
THAT  
YUMI?

THE BOOK  
THAT I LENT  
TO YOU  
BEFORE THE  
TEACHER  
CALL ME, DID  
YOU BRING IT  
TODAY?

FOR  
SURE!



I'LL BRING IT TO YOU LATER!

YI !?

女

SENSEI WANTS TO USE IT



N.. NOTHING. WHY DO YOU NEED THE BOOK? ARE YOU ALRIGHT? YOUR FACE JUST TURN RED.

女

BYE! OK. SEE YOU. BYE!

TANIGUCHI, YOU IDIOT! ... YOU ARE EMBARRASSING ME!...

BUT YOU ARE GETTING EXCITED, AREN'T YOU?

SHUT UP! YOU WEREN'T THE ONE TALKING. HOW POSSIBLY DO YOU KNOW

女

BUT YOU REALLY GOT TURNED ON!  
I... IDIOT!

EH!  
EH!  
EH!

EH  
EH  
EH  
EH

Y-I-W-4-4-4-4

AHH  
HHH  
!!!

# 嫌々好き

[その⑧]





I NEED TO PEE, SO ...

I'M GOING TO THE REST-ROOM. STOP FOLLOWING ME!



TANI-GUCHI, YOU IDIOT!



DON'T BE LIKE THAT...

HEY! STAY AWAY FROM ME!!



BUT EVEN IF YOU SAY THAT ...

DON'T GET ANY CLOSER TO ME! UNDERSTAND?



BUT YOU NEVER GAVE ME A CHANCE ...

YOU CAN'T GO BEYOND THIS DOOR!

YOU'RE SO ANNOYING!



TAEKO-CHAN.



FLUH ..

SUCH A STUB-BORN. HERE I SHOULD BE SAFE.



SINCE YOU DON'T TRUST ME, I CAME IN ANYWAY

HOW YOU DARE TO GET IN HERE ...

WHAT?!!  
TANI-  
GUCHI!!







AND WHAT'S THAT YUMI?

MAY I ASK YOU SOMETHING TAEKO-CHAN?

TAEKO-CHAN, ARE YOU THERE?



YU-MI!  
ERM  
YES

TAEKO, HOW DO YOU FEEL ABOUT TANIGUCHI-KUN?

RECENTLY, YOU'RE ALWAYS WITH TANIGUCHI-KUN

ERM  
WHY?



OH...

I DON'T FEEL ANYTHING FOR HIM AT ALL!



HMM  
REALLY? THAT'S PROBABLY JUST A PERCEPTION

S.. STUPID... STOP THAT! YOU'LL MAKE ME PEE...

W... WHY DO YOU ASK THAT?

FOR NOTHING, JUST TO MAKE SURE





YOU'RE A PIECE OF SHIT!  
HMM!

I.. I'M SO- RRY!



ENOUGH OF THAT!

I'M REALLY PISSED OFF AT YOU!



DO NOT EVER APPROACH ME AGAIN! DO YOU UNDER- STAND?!

I HAVE REACHED MY LIMIT! I WON'T TALK TO YOU EVER AGAIN!



ISHI-KAWA-SAN... DID YOU SEE NISHINO-SAN AROUND?

NISHI-NO-SAN? SHE DIDN'T FEEL WELL AND SHE WENT TO THE INFIRMARY WHY?



ER... NOTHING. I BETTER GO AN LOOK FOR HER



FAKING SICKNESS TO STAY AWAY FROM TANIGUCHI SEEMS LIKE A GOOD IDEA.

THANK YOU!

NISHINO-SAN, YOU BETTER TAKE A GOOD REST



EXCUSE ME



I FEEL LIKE I'M MISSING SOMETHING ...



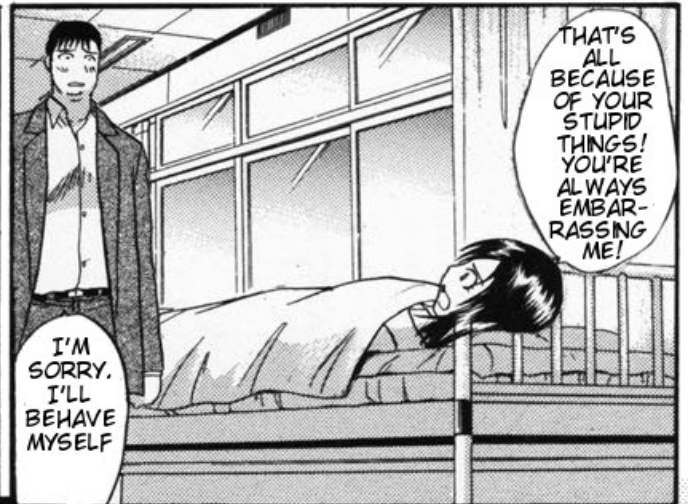
HOW DID I GOT IN THIS ACKWARD SITUATION?

... BUT... WITHOUT HIM AROUND...

WHY IS TANI-GUCHI SO PERSIS-TENT? AND WHY AM I NOT ABLE TO REFUSE HIM?



IS ANY-BODY HERE?





THEN ...

SHOW ME HOW YOU STROKE YOUR COCK



W.. WHAT ?

YOU SAID YOU'RE WILLING TO DO ANYTHING

OK

ON ONE CONDITION



BUT ...

PLEASE ALLOW ME TO DO SO!

YOU ARE SUPPOSED TO SAY "PLEASE ALLOW ME TO DO SO"



O... O.K.

ARE YOU GONNA DO IT?



WHAT!? YOU WANT TO SEE ME MASTURBATE?

SHH...! IDIOT! YOU'RE BEING TOO LOUD!

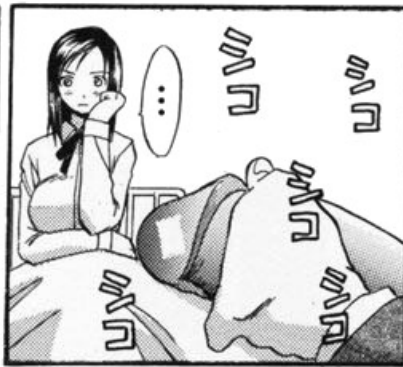


QUICK ... QUICK ...



.....







MORE

PULL UP YOUR PANTY A LITTLE BIT MORE



EH?

NO!

WHAT?

THAT'S NOT ENOUGH... I CAN'T GET HARD...

YOUR PANTY

EH!



... EH EH

CAN I GET A LITTLE CLOSER ...?

I CAN TOTALLY SEE THE SHAPE OF NISHINO-SAN'S PUSSY

YOU CAN'T GET TOO CLOSE!



IT'S GETTING SO LARGE NOW

HEY HEY

NO!

IDIOT!... I'M NOT READY FOR THAT NOW!



I KNOW, BUT THIS WAY MAKES IT EASIER TO EJACULATE!

LOOK! I'M GETTING SO HARD!

HEY ...

あっ

あ

あっ

はっ

ちぎっ

ちぎっ

ちぎっ

ちぎっ

ちぎっ



A LOT

I'M GON-NA CUM ...

HOW THE HELL ARE YOU STILL CUMMING?

WHAT...? DO YOU WANT TO PUT IT ...

... INSIDE ME? EH?

YOU CAME SO MUCH AND YOU'RE STILL HARD

WHAT'S WITH THAT FACE YOU ARE GIVING ME...

ALL OVER MY FACE

HMM ... THERE IS SEMEN

ZZZZ

ZZZZ

ZZZZ

ZZZZ

んんん



ALWAYS EMBARRASSING ME... NOW IT'S MY TURN

YOUR BALLS!

HOWEVER, SINCE YOU ARE ...

O.K. ... THEN

REALLY!?

OI...



AH... NISHINO-SAN

CAN YOU SEE HOW I'M GUIDING YOUR COCK INSIDE ME?

ふふふふ

ジ  
ジ  
ジ  
ジ  
ジ

ガ  
ガ  
ガ

んっ



THIS TIME... HIS COCK IS REACHING DEEPER



ホラ

HA

ホラあ

ホラ



GETTING ON TOP OF TANI-GUCHI ...

FEELS LIKE I'M DEMANDING SEX



HER PUSSY... I CLEARLY SEE HOW MY COCK ENTERS NISHINO-SAN'S PUSSY



DO YOU LOVE DRINKING MY SALIVA?

IT'S DELICIOUS

OH... GOOD !!

ぐんぐん

ぐんぐん



UHM?... WHAT?

TANI-GUCHI, DO YOU WANT TO KISS ME?

EEE... COME, GIVE ME YOUR TONGUE

んふっ

んふっ

んふっ





NI-SHI-NO-SAN

TANI-GUCHI-KUN

HA... HA...

NISHINO-SAN

I LOVE YOU!

UUHH!  
AAHH!

んはっ

んはっ

んはっ

んはっ

んはっ

んはっ

NO!!  
... PLEASE,  
NO!

ARE YOU  
CLIM-  
MING  
INSIDE  
AGAIN?!

NISHI-  
NO-SAN,  
I'M CLIM-  
MING  
AGAIN!

TANI-  
GUCHI-





TANI-GUCHI; HOW MUCH DID YOU CUM INSIDE ME?



はふ…

A LOT ... I GUESS

あぐ…



HA HA



ARE YOU THERE TAEKO-CHAN?



あふ…

ドクッ

あぐ…

あふ…

あふ…

あふ…





YUMI-CHAN!



WHY?...  
WHY IT  
CAME  
TO  
THIS...

I  
THOUGHT  
YOU KNEW  
MY  
FEELINGS  
...

I...  
I'M  
REALLY  
SORRY  
YUMI-CHAN.  
I DIDN'T  
KNOW  
...



COULD  
IT BE  
POSSIBLE  
THAT SHE  
LOVES  
TANI-  
GUCHI-  
KUN?

