

A woman with long brown hair, wearing a light blue short-sleeved police uniform shirt and a dark blue skirt, is sitting on a dark grey ledge. She is smoking a cigarette, with a trail of white smoke rising from her mouth. She is looking upwards and to the right. The background is a dark brick wall with a window visible behind her. There are three speech bubbles: one at the top, one on the left, and one at the bottom.

SO FUCKING  
GROSS.  
THE SOUND OF  
THEIR BODIES  
SLAPPING...

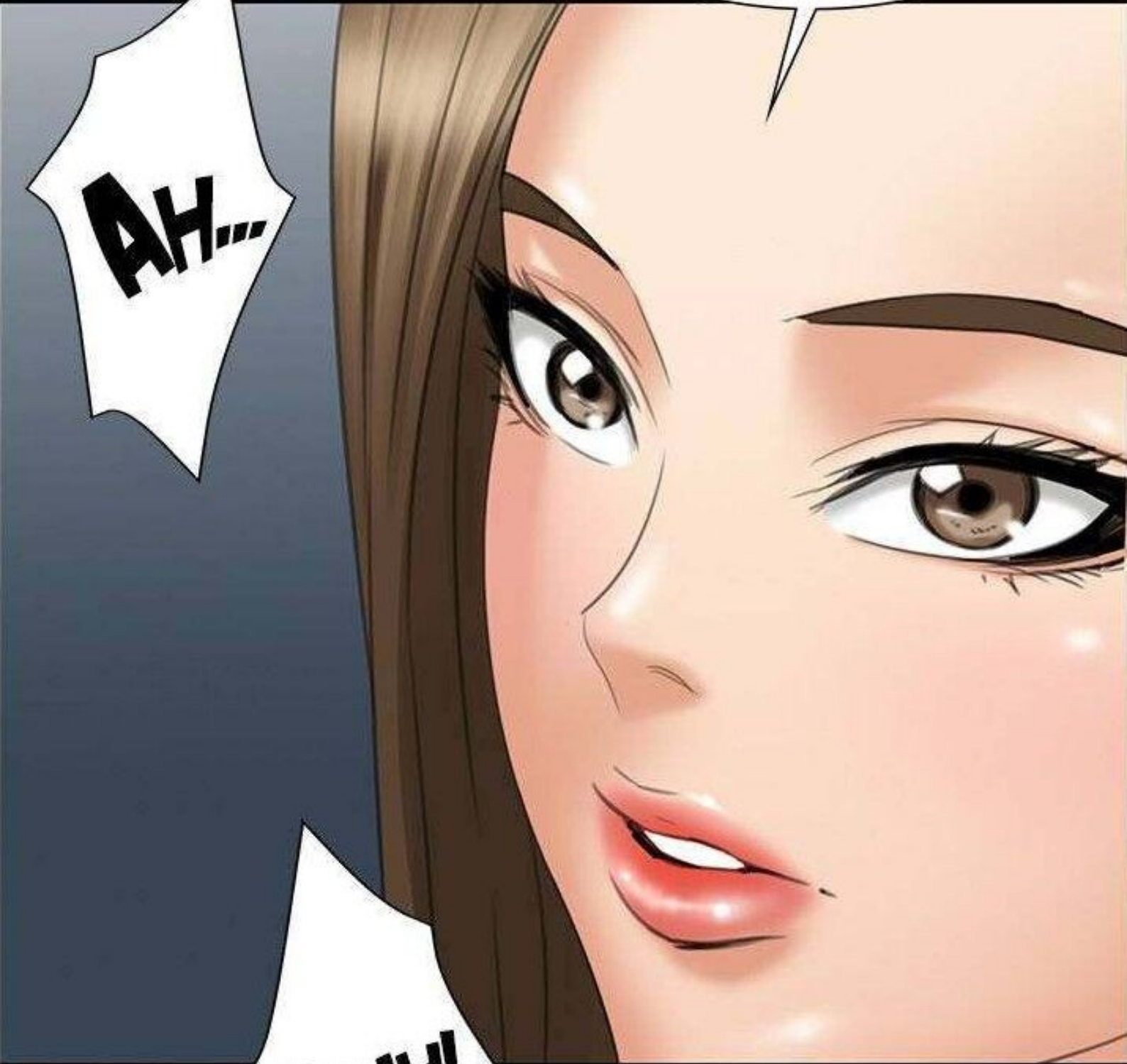
AH...

THE SOUND OF  
THAT PROSTITUTE'S  
MOANS...

YOU REALLY  
DIDN'T FUCK HER,  
RIGHT?

AH...

OHH!





YEAH...  
LIKE I TOLD YOU  
EARLIER.

**AH!**

**AH...**

I WENT THERE FOR A  
SECOND TO SHOW HER  
THE DRAWING I MADE TO  
KEEP HER QUIET ABOUT  
ME WATCHING HER PEE.

YOU IDIOT...  
WHY WOULD YOU  
TRY TO SEE  
A DIRTY PROSTITUTE  
PEEING?



I DON'T GET IT.  
YOU WANNA SEE  
THAT FILTHY  
SLUT'S PUSSY?

I GUESS ALL  
HER MOANING AND  
GROANING MADE ME  
CURIOUS ABOUT WHAT  
SHE LOOKED LIKE...

AH...

HMM..  
HMM...

I'M SORRY...  
FORGIVE ME...  
I'M GOING  
THROUGH PUBERTY...  
I CAN'T HELP IT...



I DON'T GET IT.  
YOU WANNA SEE  
THAT FILTHY  
SLUT'S PUSSY?

WHATEVER  
PICTURE YOU PROMISED...  
DON'T YOU EVER GO  
INTO HER HOUSE AGAIN,  
OKAY?

AH...



**YOU'LL FORCE ME TO  
MAKE TAE TO BEAT  
SOME SENSE INTO YOU...**

OH...

.....

I'D RATHER SEE  
TAE HIT YOU  
THAN LOSE YOU  
TO THAT SLUT...

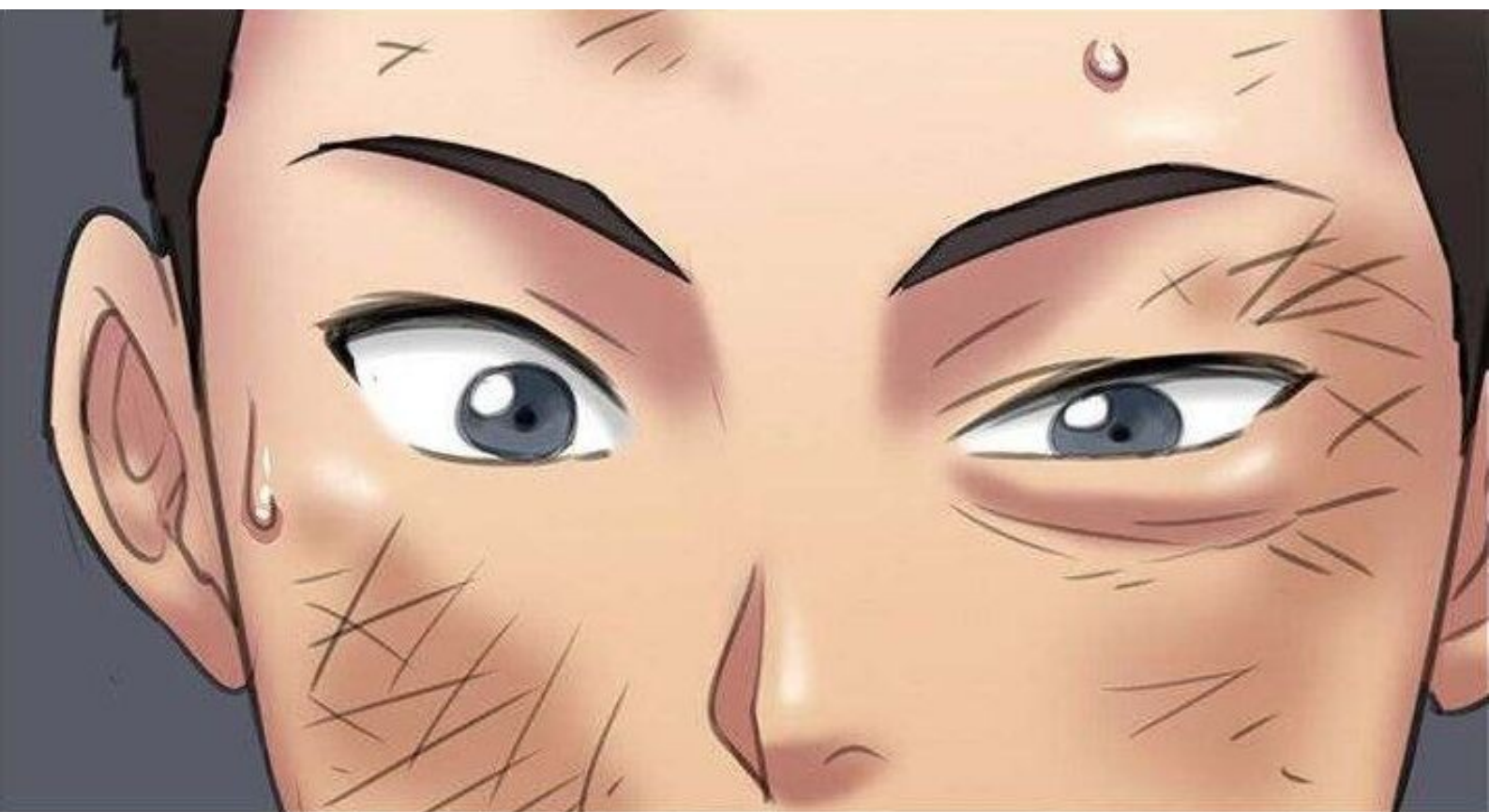
I'M GOING TO  
KEEP YOU BY MY SIDE  
FOR A LONG TIME.

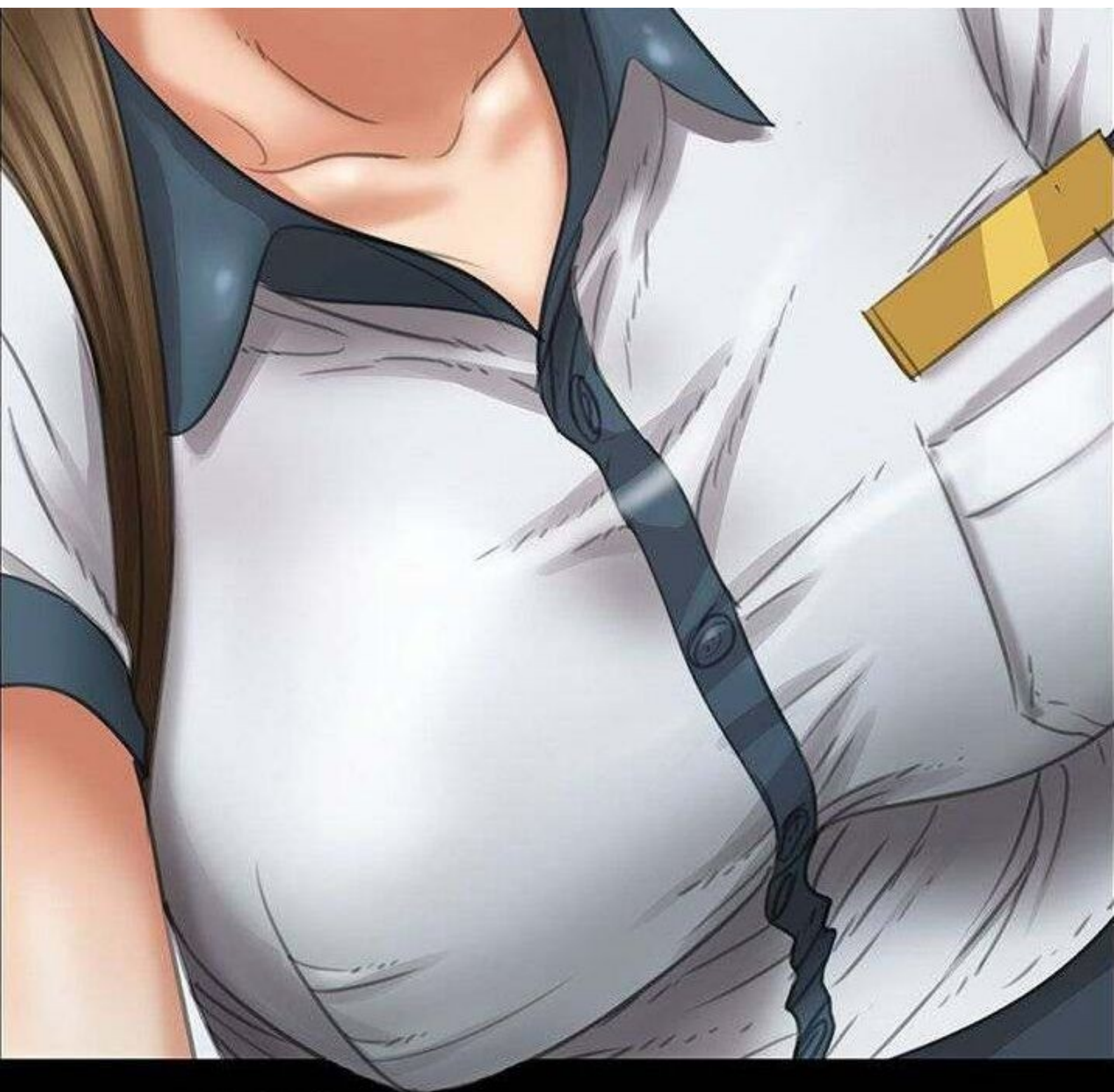
AHH...





DON'T YOU  
WANT TO BE CLOSE  
TO ME TOO?





YEAH... UMM...  
OF COURSE...

BAHAHA!

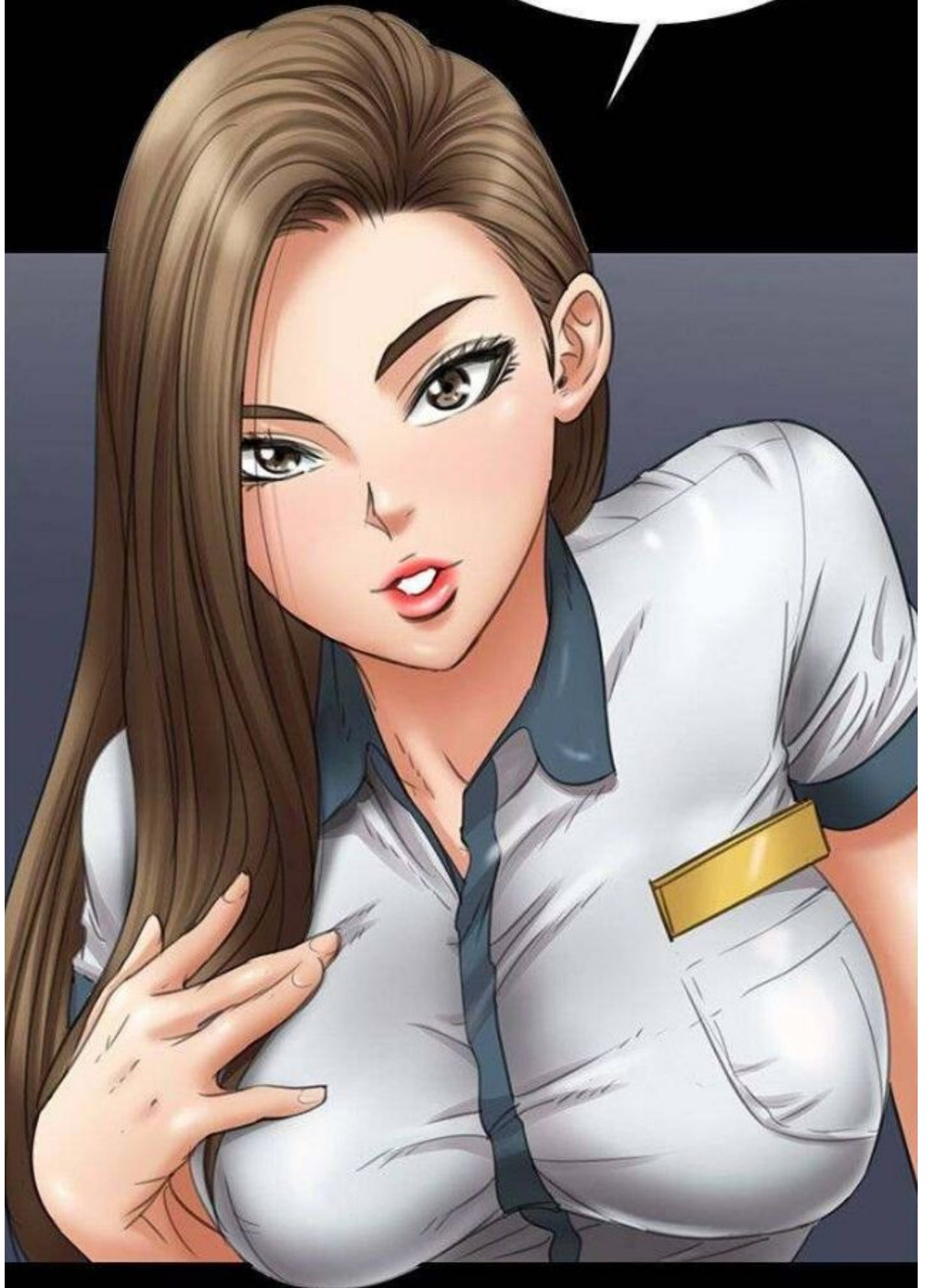
WHAT THE...  
HEY! JUNIE!



DID YOU  
JUST RESPOND  
AFTER LOOKING  
AT MY TITS?  
HA!

AH... I...  
I'M SORRY...

YOU WANT  
TO TOUCH THEM  
AGAIN?





UMM...  
YEAH...

I'M SORRY,  
DARLA...  
I THINK PUBERTY  
HIT ME HARD...  
I DON'T KNOW  
WHAT'S WRONG  
WITH ME...

A comic book panel featuring a close-up profile of a woman with long, straight brown hair. She has a slight, knowing smile on her face. A large white speech bubble is positioned above her head, containing text. To the right of her face, there is a small, white, cloud-like shape with a thin line extending from it, resembling a thought bubble or a small cloud. The background is a solid dark grey color.

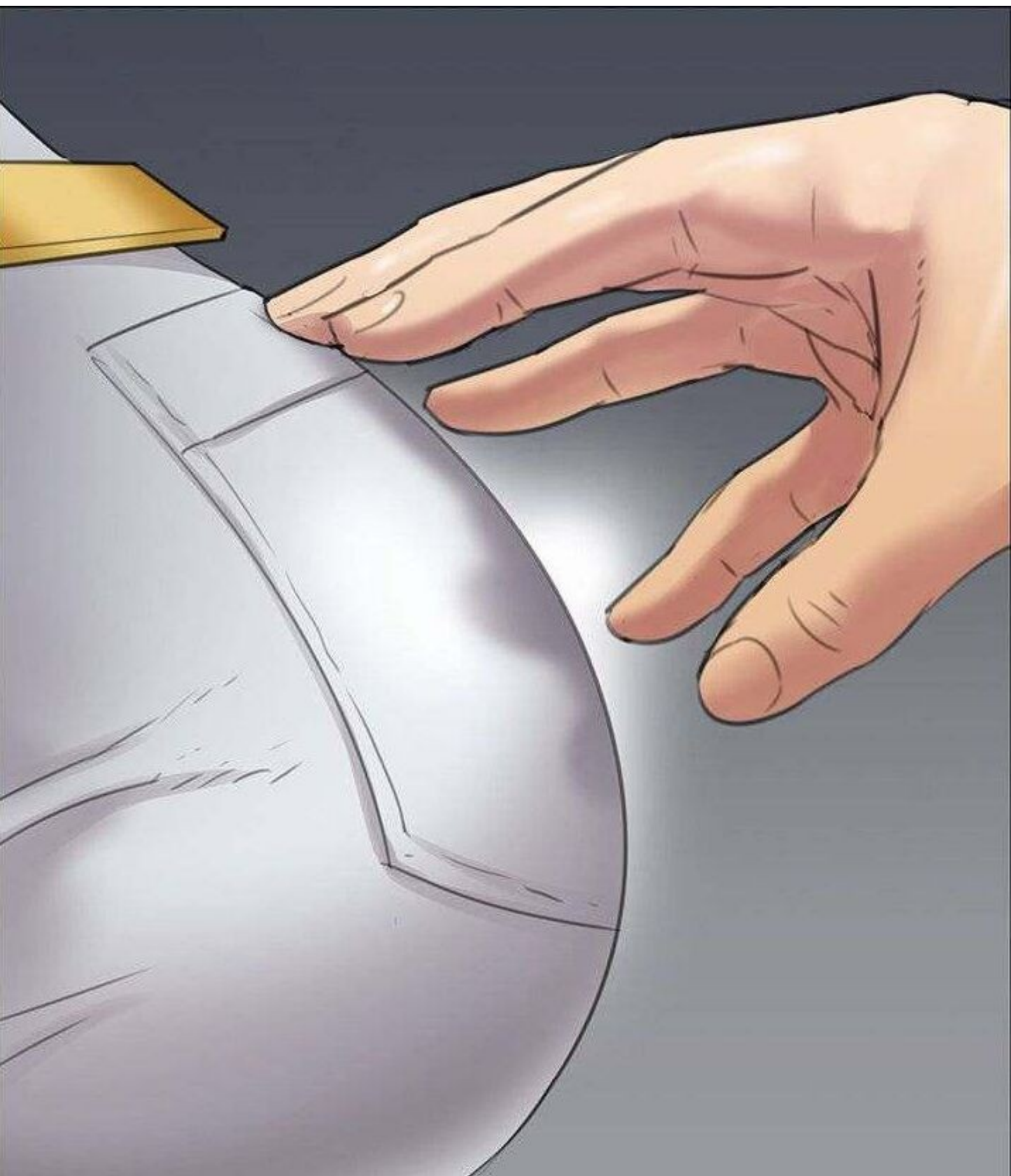
WHAT? HA!  
WE SHOULD BE  
ENDING PUBERTY  
NOT STARTING IT!

DON'T BLAME  
PUBERTY.  
YOU'RE JUST A  
FUCKING PERVERT.  
HA, HA!

YEAH...  
I AGREE...



**THE ROOF OF THE SCHOOL  
AND IN FRONT OF MY HOUSE.  
DARLA LET ME TOUCH  
HER BREASTS TWICE  
THAT DAY.**



A man with a bruised face and a woman with long hair are shown in a tense moment. The man is standing and looking at the woman, who is sitting on the ground with her back to the viewer. The man has a speech bubble above him, and the woman has a speech bubble below her. The background is a brick wall.

JUST LISTEN TO ME  
AND YOUR FAMILY WON'T  
HAVE TO WORRY ABOUT  
ANYTHING.

THUMP

YOU CAN  
LIVE HERE FOR  
AS LONG AS  
YOU WANT.



YOU ALWAYS  
HAVE TO BE  
ON MY SIDE.

YOU'LL DO THAT,  
RIGHT?  
YOU'LL ALWAYS  
LISTEN TO WHAT I SAY,  
RIGHT?



**NOD**

**NOD**

